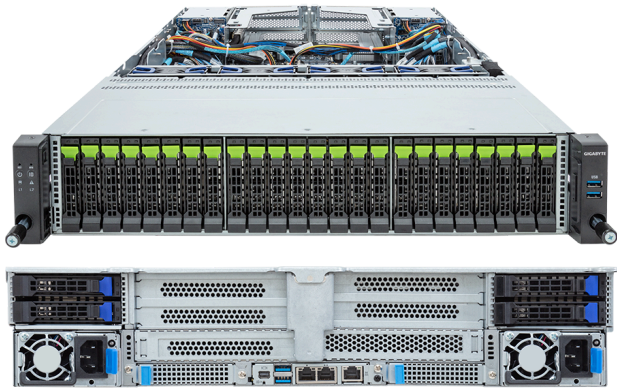
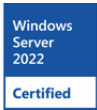


R283-Z96-AAE1

Rack Server - 2U DP 24+4-Bay Gen5 NVMe/SATA/SAS-4
Platinum



Key Features

- Dual AMD EPYC™ 9005/9004 Series Processors
- 12-Channel DDR5 RDIMM, 24 x DIMMs
- Dual ROM Architecture
- 2 x 1Gb/s LAN ports via Intel® I350-AM2
- 24 x 2.5" Gen5 NVMe hot-swap bays
- 4 x 2.5" SATA/SAS-4 hot-swap bays on the rear side
- 2 x M.2 slots with PCIe Gen3 x4 and x2 interface
- 1 x FHHL PCIe Gen5 x16 slot
- 1 x OCP NIC 3.0 PCIe Gen5 x16 slot
- Compatible with SupremeRAID™ by Graid Technology
- Dual 2000W 80 PLUS Platinum redundant power supply

Applications

Networks Server, Servers for Hybrid/Private Cloud...

Specification

Dimensions	2U (W438 x H87.5 x D815 mm)	PCIe Expansion Slots	1 x FHHL PCIe Gen5 x16 1 x OCP NIC 3.0 PCIe Gen5 x16, Support NCSI
Motherboard	MZ93-FS1	I/O Ports	Front: 2 x USB 3.2 Gen1 Rear: 2 x USB 3.2 Gen1, 1 x Mini-DP, 2 x RJ45, 1 x MLAN
CPU	AMD EPYC™ 9005 Series Processors AMD EPYC™ 9004 Series Processors Dual processor, cTDP up to 400W - cTDP up to 500W with optional heatsink	Backplane Board	Front - CBP2081: PCIe Gen5 x4 Front - CBP20G0: PCIe Gen5 x4 Rear - CBP2025: SATA 6Gb/s or SAS-4 24Gb/s
OS Compatibility	OS Support List	TPM	1 x TPM header (SPI), Optional TPM2.0 kit: CTM010
Socket	2 x LGA 6096 (Socket SP5)	Power Supply	Dual 2000W 80 PLUS Platinum redundant power supply AC Input: 100-240V
Chipset	System on Chip	System Management	ASPEED® AST2600 Baseboard Management Controller GIGABYTE Management Console web interface
Memory	12-Channel DDR5 RDIMM, 24 x DIMMs [EPYC 9005] Up to 6400 MT/s [EPYC 9004] Up to 4800 MT/s	System Fans	4 x 80x80x38mm
LAN	2 x 1Gb/s LAN (1 x Intel® I350-AM2), Support NCSI 1 x 10/100/1000 Mbps Management LAN	Operating Properties	Operating: 10°C to 35°C, 8% to 80% (non-condensing) Non-operating: -40°C to 60°C, 20% to 95% (non-condensing)
Video	Integrated in ASPEED® AST2600 - 1 x Mini-DP	Packaging Content	1 x R283-Z96-AAE1 2 x CPU heatsinks 1 x Mini-DP to D-Sub cable 1 x 2-Section Rail kit
Storage	Front hot-swap: 24 x 2.5" Gen5 NVMe Rear hot-swap: 4 x 2.5" SATA/SAS-4 ^[1] Internal M.2: 1 x M.2 (2280/22110), PCIe Gen3 x4 1 x M.2 (2280/22110), PCIe Gen3 x2 ^[1] SAS card is required to support SAS drives.	Ordering Part Numbers	With default heatsink: 6NR283Z96DR000ACE1* With optional heatsink: 6NR283Z96DR000ADE1*
RAID	Require RAID add-in cards Optional compatible RAID Cards: NVMe/NVMe-oF RAID Cards with SupremeRAID™ by Graid Technology RAID Card models: SR-1000-FD32, SR-1010-FD32 Support RAID 0/1/5/6/10	Optional Parts	- RAID card (SR-1000-FD32): 25FC1-SRBUN0-AFS - RAID card (SR-1010-FD32): 25FC1-SRBUN4-AFR - 3-Section Rail kit (Supports CMA): 25HB2-A56121-K0R - Cable Management Arm: 25HB1-R18300-K0R - CPU heatsink (500W): 25ST1-563400-C1R



Learn more at: <https://www.gigabyte.com/Enterprise>

* All specifications are subject to change without notice. Please visit our website for the latest information.
* All trademarks and logos are the properties of their respective holders.

© 2025 Giga Computing Technology Co., Ltd. All rights reserved.

Designed by

