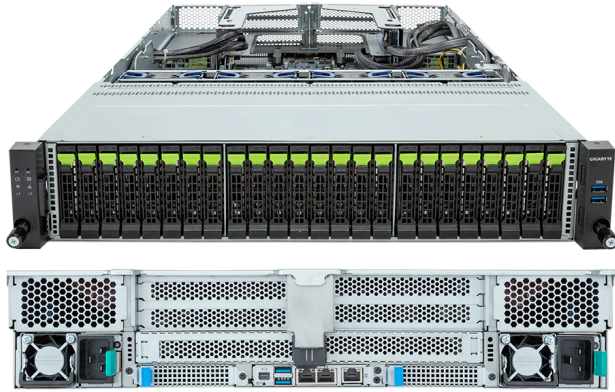


R283-P92-AAF1

Rack Arm Server - 2U DP 24-Bay Gen5 NVMe/SATA/SAS-4 Platinum



Key Features

- Dual AmpereOne® Family Processors
- 8-Channel DDR5 RDIMM, 32 x DIMMs
- Dual ROM Architecture
- 2 x 1Gb/s LAN ports via Intel® I350-AM2
- 12 x 2.5" Gen5 NVMe/SATA/SAS-4 hot-swap bays
- 12 x 2.5" Gen5 NVMe hot-swap bays
- 1 x M.2 slot with PCIe Gen5 x4 interface
- 3 x FHHL PCIe Gen5 x16 slots
- 1 x FHHL PCIe Gen5 x8 slot
- 1 x OCP NIC 3.0 PCIe Gen5 x16 slot
- 1+1 2400W 80 PLUS Platinum redundant power supplies

Applications

Networks Server, Servers for Hybrid/Private Cloud...

Specification

Dimensions	2U (W438 x H87.5 x D815 mm)	PCIe Expansion Slots	3 x FHHL PCIe Gen5 x16 1 x FHHL PCIe Gen5 x8 1 x OCP NIC 3.0 PCIe Gen5 x16, Support NCSI
Motherboard	MP93-FS0	I/O Ports	Front: 2 x USB 3.2 Gen1 Rear: 2 x USB 3.2 Gen1, 1 x Mini-DP, 2 x RJ45, 1 x MLAN
CPU	AmpereOne® Family Processors Dual processor, TDP up to 400W	Backplane Board	PCIe Gen5 x4 or SATA 6Gb/s or SAS-4 24Gb/s
OS Compatibility	OS Support List	TPM	1 x TPM header (SPI), Optional TPM2.0 kit: CTM010
Socket	2 x LGA 5964	Power Supply	1+1 2400W 80 PLUS Platinum redundant power supplies AC Input: 100-240V *The system power supply requires C19 power cord.
Chipset	System on Chip	System Management	ASPEED® AST2600 Baseboard Management Controller GIGABYTE Management Console web interface
Memory	8-Channel DDR5 RDIMM, 32 x DIMMs Up to 5200 MT/s, 4400 MT/s (2R 2DPC)	System Fans	4 x 80x80x38mm
LAN	2 x 1Gb/s LAN (1 x Intel® I350-AM2), Support NCSI 1 x 10/100/1000 Mbps Management LAN	Operating Properties	Operating: 10°C to 35°C, 8% to 80% (non-condensing) Non-operating: -40°C to 60°C, 20% to 95% (non-condensing)
Video	Integrated in ASPEED® AST2600 - 1 x Mini-DP	Packaging Content	1 x R283-P92-AAF1 2 x CPU heatsinks 1 x Mini-DP to D-Sub cable 2 x Carriers 1 x 2-Section Rail kit
Storage	Front hot-swap: 12 x 2.5" Gen5 NVMe/SATA/SAS-4 ^[1] 12 x 2.5" Gen5 NVMe Internal M.2: 1 x M.2 (2242/2260/2280/22110), PCIe Gen5 x4 ^[1] SAS card is required to support SAS drives.	Ordering Part Numbers	6NR283P92DR000ABF1*
RAID	Require RAID add-in cards	Optional Parts	- 3-Section Rail kit (Supports CMA): 25HB2-A56121-K0R - Cable Management Arm: 25HB1-R18300-K0R



Learn more at: <https://www.gigabyte.com/Enterprise>

* All specifications are subject to change without notice. Please visit our website for the latest information.
* All trademarks and logos are the properties of their respective holders.

© 2025 Giga Computing Technology Co., Ltd. All rights reserved.

Designed by

