

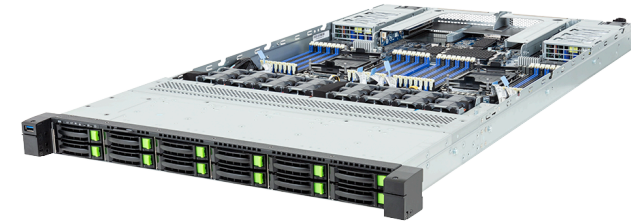
# R184-S92-AAV1

Rack Server - 1U DP 12-Bay Gen5 NVMe/SATA/SAS-4



## Key Features

- Dual Intel® Xeon® 6 Processors, LGA 4710
- 8-Channel DDR5 RDIMM / MRDIMM, 32 x DIMMs
- Dual ROM Architecture
- 2 x 1Gb/s LAN ports via Intel® I350-AM2
- 12 x 2.5" Gen5 NVMe/SATA/SAS-4 hot-swap bays
- 3 x M.2 slots with PCIe Gen5 x4 and x2 interface
- 2 x FHHL PCIe Gen5 x16 slots
- 2 x OCP NIC 3.0 PCIe Gen5 x16 slots
- Dual 1600W 80 PLUS Titanium redundant power supply



## Specification

Dimensions	1U (W438 x H43.5 x D815 mm)	PCIe Expansion Slots	2 x FHHL PCIe Gen5 x16 2 x OCP NIC 3.0 PCIe Gen5 x16, Support NCSI
Motherboard	MS94-FS0	I/O Ports	<b>Front:</b> 1 x USB 3.2 Gen1 <b>Rear:</b> 2 x USB 3.2 Gen1, 1 x Mini-DP, 2 x RJ45, 1 x MLAN
CPU	Intel® Xeon® 6 Processors - Intel® Xeon® 6700-Series Processors - Intel® Xeon® 6500-Series Processors Dual processor, TDP up to 350W	Backplane Board	PCIe Gen5 x4 or SATA 6Gb/s or SAS-4 24Gb/s
OS Compatibility	<a href="#">OS Support List</a>	TPM	1 x TPM header (SPI), Optional TPM2.0 kit: CTM012 1 x PRoT connector (only enabled on RoT SKU)
Socket	2 x LGA 4710 (Socket E2)	Power Supply	Dual 1600W 80 PLUS Titanium redundant power supply AC Input: 100-240V
Chipset	System on Chip	System Management	ASPEED® AST2600 Baseboard Management Controller GIGABYTE Management Console web interface
Memory	8-Channel DDR5 RDIMM / MRDIMM, 32 x DIMM slots [RDIMM] Up to 6400 MT/s (1DPC), 5200 MT/s (2DPC) [MRDIMM] Up to 8000 MT/s [1] <sup>[1]</sup> MRDIMMs are only supported with Intel® Xeon® 6 Processors with P-cores and in a 1DPC configuration.	System Fans	8 x 40x40x56mm (32,000rpm)
LAN	2 x 1Gb/s LAN (1 x Intel® I350-AM2), Support NCSI 1 x 10/100/1000 Mbps Management LAN	Operating Properties	Operating: 10°C~35°C, 8%~80% (non-condensing) Non-operating: -40°C~60°C, 20%~95% (non-condensing)
Video	Integrated in ASPEED® AST2600 - 1 x Mini-DP	Packaging Content	1 x R184-S92-AAV1 2 x CPU heatsinks 1 x Mini-DP to D-Sub cable 4 x Carriers 1 x 2-Section Rail kit
Storage	<b>Front hot-swap:</b> 12 x 2.5" Gen5 NVMe/SATA/SAS-4 [1] <b>Internal M.2:</b> 2 x M.2 (2280/22110), PCIe Gen5 x4 1 x M.2 (2280), PCIe Gen5 x2 <sup>[1]</sup> Storage card is required to support SATA and SAS drives.	Ordering Part Numbers	6NR184S92DR000AAV1*
RAID	Require RAID add-in cards Onboard VROC key header	Optional Parts	- 3-Section Rail kit (Supports CMA): 25HB2-A56121-KOR - Cable Management Arm: 25HB1-R18300-KOR



Learn more at: <https://www.gigabyte.com/Enterprise>

\* All specifications are subject to change without notice. Please visit our website for the latest information.  
\* All trademarks and logos are the properties of their respective holders.

© 2025 Giga Computing Technology Co., Ltd. All rights reserved.

Designed by

