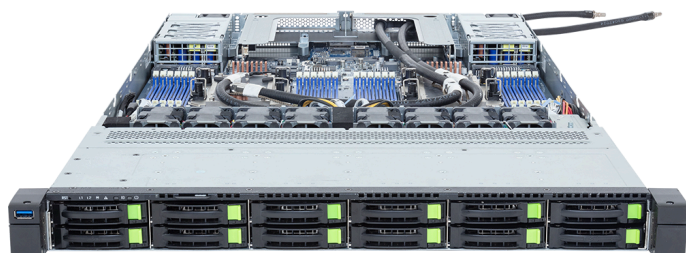


# R184-A92-LAJ1

Rack Server - 1U DP 12-Bay Gen5 NVMe/SATA/SAS-4 DLC



## Key Features

- Direct liquid cooling solution
- Dual Intel® Xeon® 6 Processors, LGA 7529
- 12-Channel DDR5 RDIMM / MRDIMM, 24 x DIMMs
- Dual ROM Architecture
- 2 x 1Gb/s LAN ports via Intel® I350-AM2
- 12 x 2.5" Gen5 NVMe/SATA/SAS-4 hot-swap bays
- 3 x M.2 slots with PCIe Gen5 x4 and x2 interface
- 1 x FHHL PCIe Gen5 x16 slot
- 2 x OCP NIC 3.0 PCIe Gen5 x16 slots
- 1+1 2000W 80 PLUS Titanium redundant power supplies

## Specification

Dimensions	1U (W438 x H43.5 x D815 mm)	PCIe Expansion Slots	1 x FHHL PCIe Gen5 x16 2 x OCP NIC 3.0 PCIe Gen5 x16
Motherboard	MA94-FS0	I/O Ports	<b>Front:</b> 1 x USB 3.2 Gen1 <b>Rear:</b> 2 x USB 3.2 Gen1, 1 x Mini-DP, 2 x RJ45, 1 x MLAN
CPU	Intel® Xeon® 6 Processors - Intel® Xeon® 6900-Series Processors Dual processor, TDP up to 500W	Backplane Board	PCIe Gen5 x4 or SATA 6Gb/s or SAS-4 24Gb/s
OS Compatibility	<a href="#">OS Support List</a>	TPM	1 x TPM header (SPI), Optional TPM2.0 kit: CTM012 1 x PRoT connector (only enabled on RoT SKU)
Socket	2 x LGA 7529 (Socket BR)	Power Supply	1+1 2000W 80 PLUS Titanium redundant power supplies AC Input: 100-240V
Chipset	System on Chip	System Management	ASPEED® AST2600 Baseboard Management Controller GIGABYTE Management Console web interface
Memory	12-Channel DDR5 RDIMM / MRDIMM, 24 x DIMMs [RDIMM] Up to 6400 MT/s [MRDIMM] Up to 8800 MT/s [1] [1] MRDIMMs are only supported with Intel® Xeon® 6 Processors with P-cores.	System Fans	8 x 40x40x56mm (38,000rpm)
Lan	2 x 1Gb/s LAN (1 x Intel® I350-AM2), Support NCSI 1 x 10/100/1000 Mbps Management LAN	Operating Properties	Operating: 10°C~35°C, 8%~80% (non-condensing) Non-operating: -40°C~60°C, 20%~95% (non-condensing)
Video	Integrated in ASPEED® AST2600 - 1 x Mini-DP	Packaging Content	1 x R184-A92-LAJ1 1 x CoolIT CPU cold plate loop 1 x Mini-DP to D-Sub cable 2 x Carriers 1 x 2-Section Rail kit
Storage	<b>Front hot-swap:</b> 12 x 2.5" Gen5 NVMe/SATA/SAS-4 [1] <b>Internal M.2:</b> 2 x M.2 (2280/22110), PCIe Gen5 x4 1 x M.2 (2280), PCIe Gen5 x2 [1] Storage card is required to support SATA and SAS drives.	Ordering Part Numbers	With cold plates: 6NR184A92DR000LAJ1* Without cold plates: 6NR184A92DZ000LAJ1*
RAID	Require RAID add-in cards Onboard VROC key header	Optional Parts	- 3-Section Rail kit (Supports CMA): 25HB2-A56121-K0R - Cable Management Arm: 25HB1-R18300-K0R



Learn more at: <https://www.gigabyte.com/Enterprise>

\* All specifications are subject to change without notice. Please visit our website for the latest information.  
\* All trademarks and logos are the properties of their respective holders.

© 2025 Giga Computing Technology Co., Ltd. All rights reserved.

Designed by

