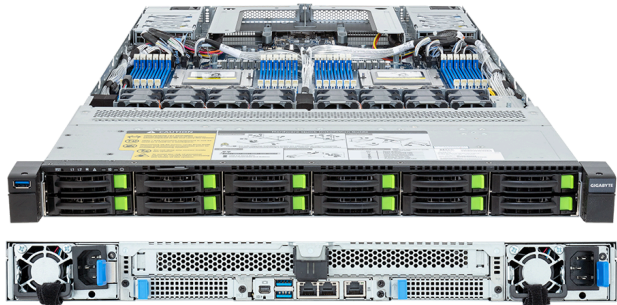


R183-Z94-AAV1

Rack Server - 1U DP 12-Bay Gen5 NVMe/SATA/SAS-4 Titanium



Key Features

- Dual AMD EPYC™ 9004 Series Processors
- 12-Channel DDR5 RDIMM, 24 x DIMMs
- Dual ROM Architecture
- 2 x 1Gb/s LAN ports via Intel® I350-AM2
- 12 x 2.5" Gen5 NVMe/SATA/SAS-4 hot-swap bays
- 3 x M.2 slots with PCIe Gen3 x4 and x2 interface
- 2 x FHHL PCIe Gen5 x16 slots
- 2 x OCP NIC 3.0 PCIe Gen5 x16 slots
- Dual 1600W 80 PLUS Titanium redundant power supply

Applications

Networks Server, Servers for Hybrid/Private Cloud...

Specification

| | | | |
|------------------|---|-----------------------|--|
| Dimensions | 1U (W438 x H43.5 x D815 mm) | PCIe Expansion Slots | 2 x FHHL PCIe Gen5 x16 2 x OCP NIC 3.0 PCIe Gen5 x16, Support NCSI |
| Motherboard | MZ93-FS1 | I/O Ports | Front: 1 x USB 3.2 Gen1 Rear: 2 x USB 3.2 Gen1, 1 x Mini-DP, 2 x RJ45, 1 x MLAN |
| CPU | AMD EPYC™ 9005 Series Processors AMD EPYC™ 9004 Series Processors Dual processor, cTDP up to 300W - OCP NIC 3.0 ≤ 21W at 30°C ambient, EPYC 9654 cTDP up to 400W *cTDP supported up to 400W under limited thermal conditions. | Backplane Board | PCIe Gen5 x4 or SATA 6Gb/s or SAS-4 24Gb/s |
| OS Compatibility | OS Support List | TPM | 1 x TPM header (SPI), Optional TPM2.0 kit: CTM010 |
| Socket | 2 x LGA 6096 (Socket SP5) | Power Supply | Dual 1600W 80 PLUS Titanium redundant power supply AC Input: 100-240V |
| Chipset | System on Chip | System Management | ASPEED® AST2600 Baseboard Management Controller GIGABYTE Management Console web interface |
| Memory | 12-Channel DDR5 RDIMM, 24 x DIMMs Up to 4800 MT/s | System Fans | 8 x 40x40x56mm |
| LAN | 2 x 1Gb/s LAN (1 x Intel® I350-AM2), Support NCSI 1 x 10/100/1000 Mbps Management LAN | Operating Properties | Operating: 10°C to 35°C, 8% to 80% (non-condensing) Non-operating: -40°C to 60°C, 20% to 95% (non-condensing) |
| Video | Integrated in ASPEED® AST2600 - 1 x Mini-DP | Packaging Content | 1 x R183-Z94-AAV1 2 x CPU heatsinks 1 x Mini-DP to D-Sub cable 1 x 2-Section Rail kit |
| Storage | Front hot-swap: 12 x 2.5" Gen5 NVMe/SATA/SAS-4 ^[1] Internal M.2: 2 x M.2 (2280/22110), PCIe Gen3 x4 1 x M.2 (2280/22110), PCIe Gen3 x2 ^[1] SAS card is required to support SAS drives. | Ordering Part Numbers | 6NR183Z94DR000ABV1* |
| RAID | Require RAID add-in cards | Optional Parts | - 3-Section Rail kit (Supports CMA): 25HB2-A56121-K0R - Cable Management Arm: 25HB1-R18300-K0R |



Learn more at: <https://www.gigabyte.com/Enterprise>

* All specifications are subject to change without notice. Please visit our website for the latest information.
* All trademarks and logos are the properties of their respective holders.

© 2025 Giga Computing Technology Co., Ltd. All rights reserved.

Designed by

