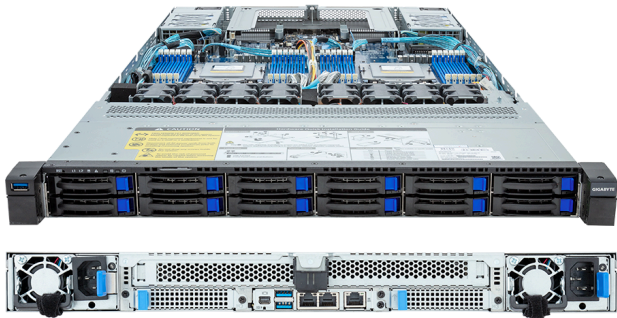


# R183-Z92-AAV3

Rack Server - 1U DP 12-Bay SATA/SAS Titanium



### Key Features

- Dual AMD EPYC™ 9005/9004 Series Processors
- 12-Channel DDR5 RDIMM, 24 x DIMMs
- Dual ROM Architecture
- 2 x 1Gb/s LAN ports via Intel® I350-AM2
- 12 x 2.5" SATA/SAS hot-swap bays
- 3 x M.2 slots with PCIe Gen3 x4 and x2 interface
- 2 x FHHL PCIe Gen5 x16 slots
- 2 x OCP NIC 3.0 PCIe Gen5 x16 slots
- Dual 1600W 80 PLUS Titanium redundant power supply

### Applications

Networks Server, Servers for Hybrid/Private Cloud...

### Specification

Dimensions	1U (W438 x H43.5 x D815 mm)	PCIe Expansion Slots	2 x FHHL PCIe Gen5 x16 2 x OCP NIC 3.0 PCIe Gen5 x16, Support NCSI
Motherboard	MZ93-FS0	I/O Ports	<b>Front:</b> 1 x USB 3.2 Gen1 <b>Rear:</b> 2 x USB 3.2 Gen1, 1 x Mini-DP, 2 x RJ45, 1 x MLAN
CPU	AMD EPYC™ 9005 Series Processors AMD EPYC™ 9004 Series Processors Dual processor, cTDP up to 300W - OCP NIC 3.0 ≤ 21W at 30°C ambient, cTDP up to 400W	Backplane Board	PCIe Gen4 x4 or SATA 6Gb/s or SAS 12Gb/s
OS Compatibility	<a href="#">OS Support List</a>	TPM	1 x TPM header (SPI), Optional TPM2.0 kit: CTM010
Socket	2 x LGA 6096 (Socket SP5)	Power Supply	Dual 1600W 80 PLUS Titanium redundant power supply AC Input: 100-240V
Chipset	System on Chip	System Management	ASPEED® AST2600 Baseboard Management Controller GIGABYTE Management Console web interface
Memory	12-Channel DDR5 RDIMM, 24 x DIMMs [EPYC 9005] Up to 6400 MT/s [EPYC 9004] Up to 4800 MT/s	System Fans	8 x 40x40x56mm (32,000rpm)
LAN	2 x 1Gb/s LAN (1 x Intel® I350-AM2), Support NCSI 1 x 10/100/1000 Mbps Management LAN	Operating Properties	Operating: 10°C to 35°C, 8% to 80% (non-condensing) Non-operating: -40°C to 60°C, 20% to 95% (non-condensing)
Video	Integrated in ASPEED® AST2600 - 1 x Mini-DP	Packaging Content	1 x R183-Z92-AAV3 2 x CPU heatsinks 1 x Mini-DP to D-Sub cable 1 x 2-Section Rail kit
Storage	<b>Front hot-swap:</b> 12 x 2.5" SATA/SAS <sup>[1]</sup> <b>Internal M.2:</b> 2 x M.2 (2280/22110), PCIe Gen3 x4 1 x M.2 (2280/22110), PCIe Gen3 x2 <sup>[1]</sup> SAS card is required to support SAS drives.	Ordering Part Numbers	6NR183Z92DR000ACV3*
RAID	Require RAID add-in cards	Optional Parts	- 3-Section Rail kit (Supports CMA): 25HB2-A56121-K0R - Cable Management Arm: 25HB1-R18300-K0R



Learn more at: <https://www.gigabyte.com/Enterprise>

\* All specifications are subject to change without notice. Please visit our website for the latest information.  
\* All trademarks and logos are the properties of their respective holders.

© 2025 Giga Computing Technology Co., Ltd. All rights reserved.

Designed by

