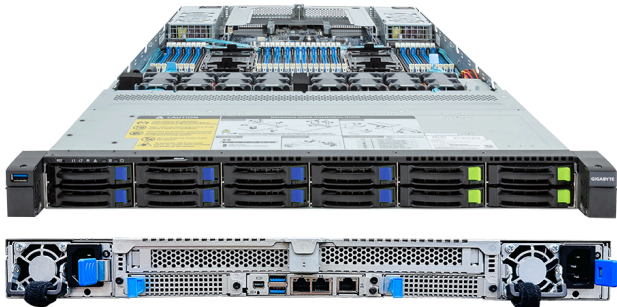
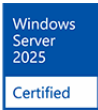
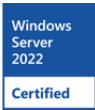


# R183-S92-AAV2

Rack Server - 1U DP 12-Bay Gen4  
NVMe/SATA/SAS Titanium



### Key Features

- Dual 5th/4th Gen Intel® Xeon® Scalable Processors
- Dual Intel® Xeon® CPU Max Series
- 8-Channel DDR5 RDIMM, 32 x DIMMs
- Dual ROM Architecture
- 2 x 1Gb/s LAN ports via Intel® I350-AM2
- 4 x 2.5" Gen4 NVMe/SATA/SAS hot-swap bays
- 8 x 2.5" SATA/SAS hot-swap bays
- 2 x FHHL PCIe Gen5 x16 slots
- 2 x OCP NIC 3.0 PCIe Gen5 x16 slots
- Compatible with SupremeRAID™ by Graid Technology
- 1+1 1600W 80 PLUS Titanium redundant power supplies

### Applications

Networks Server, Servers for Hybrid/Private Cloud...

### Specification

|                  |   |                       |  |
|------------------|---|-----------------------|--|
| Dimensions       | 1U (W438 x H43.5 x D815 mm)   | PCIe Expansion Slots  | 2 x FHHL PCIe Gen5 x16<br>2 x OCP NIC 3.0 PCIe Gen5 x16, Support NCSI  |
| Motherboard      | MS93-FS0  | I/O Ports             | <b>Front:</b><br>1 x USB 3.2 Gen1<br><b>Rear:</b><br>2 x USB 3.2 Gen1, 1 x Mini-DP, 2 x RJ45, 1 x MLAN   |
| CPU              | 5th Generation Intel® Xeon® Scalable Processors<br>4th Generation Intel® Xeon® Scalable Processors<br>Intel® Xeon® CPU Max Series<br>Dual processor, TDP up to 350W   | Backplane Board       | PCIe Gen4 x4 or SATA 6Gb/s or SAS 12Gb/s   |
| OS Compatibility | <a href="#">OS Support List</a>   | TPM                   | 1 x TPM header (SPI), Optional TPM2.0 kit: CTM010  |
| Socket           | 2 x LGA 4677 (Socket E)   | Power Supply          | 1+1 1600W 80 PLUS Titanium redundant power supplies<br>AC Input: 100-240V  |
| Chipset          | Intel® C741   | System Management     | ASPEED® AST2600 Baseboard Management Controller<br>GIGABYTE Management Console web interface   |
| Memory           | 8-Channel DDR5 RDIMM, 32 x DIMMs<br>[5th Gen Intel Xeon] Up to 5600 MT/s (1DPC), 4400 MT/s (2DPC) <sup>[1]</sup><br>[4th Gen Intel Xeon] Up to 4800 MT/s (1DPC), 4400 MT/s (2DPC)<br>[Intel Xeon Max Series] Up to 4800 MT/s (1DPC), 4400 MT/s (2DPC)<br><sup>[1]</sup> 5600 MT/s support under 2DPC configuration requires verified memory and BIOS setup. | System Fans           | 8 x 40x40x56mm   |
| LAN              | 2 x 1Gb/s LAN (1 x Intel® I350-AM2), Support NCSI<br>1 x 10/100/1000 Mbps Management LAN  | Operating Properties  | Operating: 10°C to 35°C, 8% to 80% (non-condensing)<br>Non-operating: -40°C to 60°C, 20% to 95% (non-condensing)                                 |
| Video            | Integrated in ASPEED® AST2600<br>- 1 x Mini-DP  | Packaging Content     | 1 x R183-S92-AAV2<br>2 x CPU heatsinks<br>1 x Mini-DP to D-Sub cable<br>6 x Carriers<br>1 x 2-Section Rail kit                                   |
| Storage          | <b>Front hot-swap:</b><br>4 x 2.5" Gen4 NVMe/SATA/SAS <sup>[1]</sup><br>8 x 2.5" SATA/SAS <sup>[1]</sup><br><sup>[1]</sup> SAS card is required to support SAS drives.  | Ordering Part Numbers | 6NR183S92DR000ABV2*  |
| RAID             | Intel® SATA RAID 0/1/10/5<br>Onboard VROC key header<br><b>Optional compatible RAID Cards:</b><br>NVMe RAID Cards with SupremeRAID™ by Graid Technology<br>RAID Card models: SR-1001-ED4<br>Support RAID 0/1/5/6/10   | Optional Parts        | - RAID card (SR-1001-ED4): 25FC1-SR1000-AFS<br>- 3-Section Rail kit (Supports CMA): 25HB2-A56121-K0R<br>- Cable Management Arm: 25HB1-R18300-K0R |



Learn more at: <https://www.gigabyte.com/Enterprise>

\* All specifications are subject to change without notice. Please visit our website for the latest information.  
\* All trademarks and logos are the properties of their respective holders.

© 2025 Giga Computing Technology Co., Ltd. All rights reserved.

Designed by

