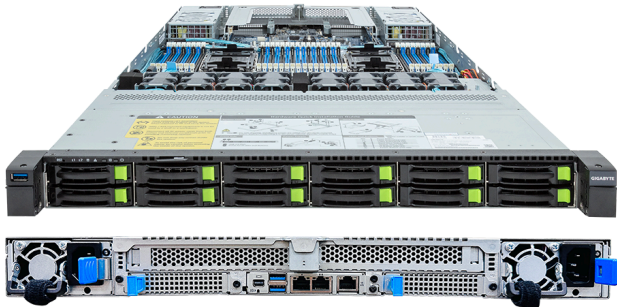


R183-S92-AAD1

Rack Server - 1U DP 12-Bay Gen4
NVMe/SATA/SAS Platinum



Key Features

- Dual 5th/4th Gen Intel® Xeon® Scalable Processors
- Dual Intel® Xeon® CPU Max Series
- 8-Channel DDR5 RDIMM, 32 x DIMMs
- Dual ROM Architecture
- 2 x 1Gb/s LAN ports via Intel® I350-AM2
- 12 x 2.5" Gen4 NVMe/SATA/SAS hot-swap bays
- 2 x FHHL PCIe Gen5 x16 slots
- 2 x OCP NIC 3.0 PCIe Gen5 x16 slots
- Compatible with SupremeRAID™ by Graid Technology
- Dual 1600W 80 PLUS Platinum redundant power supply

Applications

Networks Server, Servers for Hybrid/Private Cloud...

Specification

Dimensions	1U (W438 x H43.5 x D815 mm)	PCIe Expansion Slots	2 x FHHL PCIe Gen5 x16 2 x OCP NIC 3.0 PCIe Gen5 x16, Support NCSI
Motherboard	MS93-FS0	I/O Ports	Front: 1 x USB 3.2 Gen1 Rear: 2 x USB 3.2 Gen1, 1 x Mini-DP, 2 x RJ45, 1 x MLAN
CPU	5th Generation Intel® Xeon® Scalable Processors 4th Generation Intel® Xeon® Scalable Processors Intel® Xeon® CPU Max Series Dual processor, TDP up to 350W	Backplane Board	PCIe Gen4 x4 or SATA 6Gb/s or SAS 12Gb/s
OS Compatibility	OS Support List	TPM	1 x TPM header (SPI), Optional TPM2.0 kit: CTM010
Socket	2 x LGA 4677 (Socket E)	Power Supply	Dual 1600W 80 PLUS Platinum redundant power supply AC Input: 100-240V
Chipset	Intel® C741	System Management	ASPEED® AST2600 Baseboard Management Controller GIGABYTE Management Console web interface
Memory	8-Channel DDR5 RDIMM, 32 x DIMMs [5th Gen Intel Xeon] Up to 5600 MT/s (1DPC), 4400 MT/s (2DPC) ^[1] [4th Gen Intel Xeon] Up to 4800 MT/s (1DPC), 4400 MT/s (2DPC) [Intel Xeon Max Series] Up to 4800 MT/s (1DPC), 4400 MT/s (2DPC) ^[1] 5600 MT/s support under 2DPC configuration requires verified memory and BIOS setup.	System Fans	8 x 40x40x56mm
LAN	2 x 1Gb/s LAN (1 x Intel® I350-AM2), Support NCSI 1 x 10/100/1000 Mbps Management LAN	Operating Properties	Operating: 10°C to 35°C, 8% to 80% (non-condensing) Non-operating: -40°C to 60°C, 20% to 95% (non-condensing)
Video	Integrated in ASPEED® AST2600 - 1 x Mini-DP	Packaging Content	1 x R183-S92-AAD1 2 x CPU heatsinks 1 x Mini-DP to D-Sub cable 6 x Carriers 1 x 2-Section Rail kit
Storage	Front hot-swap: 12 x 2.5" Gen4 NVMe/SATA/SAS ^[1] ^[1] SAS card is required to support SAS drives.	Ordering Part Numbers	6NR183S92DR000ABD1*
RAID	Intel® SATA RAID 0/1/10/5 Onboard VROC key header Optional compatible RAID Cards: NVMe RAID Cards with SupremeRAID™ by Graid Technology RAID Card models: SR-1000-ED12 Support RAID 0/1/5/6/10	Optional Parts	- RAID card (SR-1000-ED12): 25FC1-SRBUN3-AFS - 3-Section Rail kit (Supports CMA): 25HB2-A56121-K0R - Cable Management Arm: 25HB1-R18300-K0R



Learn more at: <https://www.gigabyte.com/Enterprise>

* All specifications are subject to change without notice. Please visit our website for the latest information.
* All trademarks and logos are the properties of their respective holders.

© 2025 Giga Computing Technology Co., Ltd. All rights reserved.

Designed by

