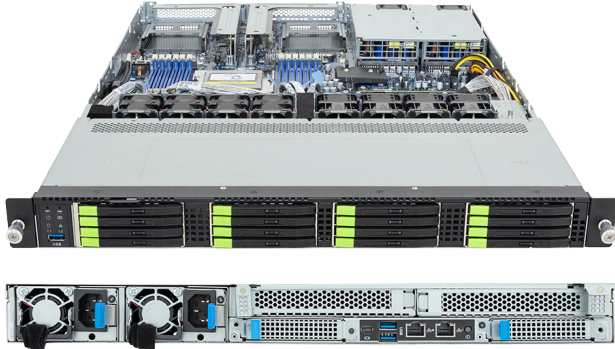


R163-Z36-AAJ2

Rack Server - 1U UP 16-Bay E3.S Gen5 NVMe



Key Features

- Single AMD EPYC™ 9005/9004 Series Processors
- 12-Channel DDR5 RDIMM, 12 x DIMMs
- Dual ROM Architecture
- 1 x 1Gb/s LAN port via Intel® I210-AT
- 16 x E3.S Gen5 NVMe hot-swap bays
- 1 x M.2 slot with PCIe Gen3 x4 interface
- 2 x FHHL PCIe Gen5 x16 slots
- 2 x OCP NIC 3.0 PCIe Gen5 x16 slots
- 2 x 2000W 80 PLUS Titanium redundant power supplies

Applications

Networks Server, Servers for Hybrid/Private Cloud...

Specification

Dimensions	1U (W438 x H43.5 x D710 mm)	PCIe Expansion Slots	2 x FHHL PCIe Gen5 x16 2 x OCP NIC 3.0 PCIe Gen5 x16, Support NCSI
Motherboard	MZ33-DC1	I/O Ports	Front: 1 x USB 3.2 Gen1 Rear: 2 x USB 3.2 Gen1, 1 x Mini-DP, 1 x RJ45, 1 x MLAN
CPU	AMD EPYC™ 9005 Series Processors AMD EPYC™ 9004 Series Processors Single processor, cTDP up to 300W - At 25°C ambient, cTDP up to 400W	Backplane Board	PCIe Gen5 x4
OS Compatibility	OS Support List	TPM	1 x TPM header (SPI), Optional TPM2.0 kit: CTM012
Socket	1 x LGA 6096 (Socket SP5)	Power Supply	2 x 2000W 80 PLUS Titanium redundant power supplies AC Input: 100-240V
Chipset	System on Chip	System Management	ASPEED® AST2600 Baseboard Management Controller GIGABYTE Management Console web interface
Memory	12-Channel DDR5 RDIMM, 12 x DIMMs [EPYC 9005] Up to 6400 MT/s [EPYC 9004] Up to 4800 MT/s	System Fans	4 x 40x40x28mm (25,000rpm) 4 x 40x40x56mm (38,000rpm)
LAN	1 x 1Gb/s LAN (1 x Intel® I210-AT), Support NCSI 1 x 10/100/1000 Mbps Management LAN	Operating Properties	Operating: 10°C to 35°C, 8% to 80% (non-condensing) Non-operating: -40°C to 60°C, 20% to 95% (non-condensing)
Video	Integrated in ASPEED® AST2600 - 1 x Mini-DP	Packaging Content	1 x R163-Z36-AAJ2 1 x CPU heatsink 1 x Mini-DP to D-Sub cable 1 x 2-Section Rail kit
Storage	Front hot-swap: 16 x E3.S Gen5 NVMe Internal M.2: 1 x M.2 (2280/22110), PCIe Gen3 x4	Ordering Part Numbers	6NR163Z36DR000ACJ2*
RAID	Require RAID add-in cards	Optional Parts	- 3-Section Rail kit (Supports CMA): 25HB2-A56120-K0R - Cable Management Arm: 25HBZ-R18100-K0R



Learn more at: <https://www.gigabyte.com/Enterprise>

* All specifications are subject to change without notice. Please visit our website for the latest information.
* All trademarks and logos are the properties of their respective holders.

© 2025 Giga Computing Technology Co., Ltd. All rights reserved.

Designed by

