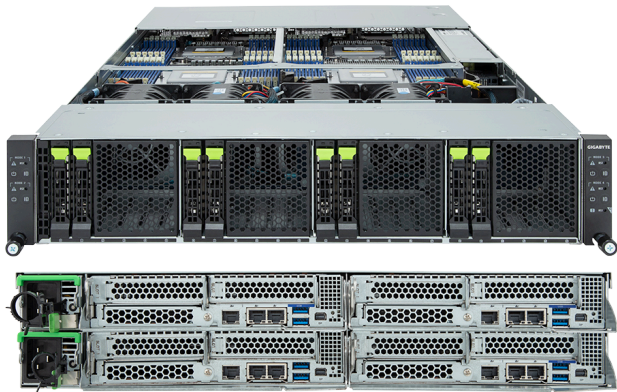
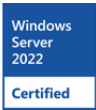
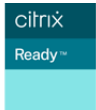


# H273-Z81-AAN1

High Density Server - 2U 4-Node DP 8-Bay Gen4 NVMe/SATA/SAS  
2600W



## Key Features

- 2U 4-node rear access server system
- Dual AMD EPYC™ 9005/9004 Series Processors per node
- 12-Channel DDR5 RDIMM, 24 x DIMMs per node
- Dual ROM Architecture
- 8 x 1Gb/s LAN ports via Intel® I350-AM2
- 8 x 2.5" Gen4 NVMe/SATA/SAS hot-swap bays
- 4 x M.2 slots with PCIe Gen4 x4 interface **(optional)**
- 8 x LP PCIe Gen5 x16 slots
- 4 x OCP NIC 3.0 PCIe Gen5 x16 slots
- Dual 2600W 80 PLUS Titanium redundant power supply

## Applications

High Converged Server, Servers for Hybrid/Private Cloud...

## Specification

Dimensions	2U 4-Node - Rear access (W440 x H87.5 x D877 mm)	PCIe Expansion Slots	8 x LP PCIe Gen5 x16 4 x OCP NIC 3.0 PCIe Gen5 x16, Support NCSI
Motherboard	MZ8H-HD0	I/O Ports	<b>Front:</b> 1 x CMC status LED, 1 x CMC reset button <b>Rear:</b> 8 x USB 3.2 Gen1, 4 x Mini-DP, 8 x RJ45, 4 x MLAN
CPU	AMD EPYC™ 9005 Series Processors AMD EPYC™ 9004 Series Processors Dual processor per node, cTDP up to 240W - With 1 x low-profile card at 30°C ambient, cTDP up to 300W - With OCP NIC 3.0 at 25°C ambient, cTDP up to 300W	Backplane Board	PCIe Gen4 x4 or SATA 6Gb/s or SAS 12Gb/s
OS Compatibility	<a href="#">OS Support List</a>	TPM	1 x TPM header (SPI), Optional TPM2.0 kit: CTM010
Socket	8 x LGA 6096 (Socket SP5)	Power Supply	Dual 2600W 80 PLUS Titanium redundant power supply AC Input: 100-240V *The system power supply requires C19 power cord.
Chipset	System on Chip	System Management	ASPEED® AST2600 Baseboard Management Controller ASPEED® AST2520 Chassis Management Controller GIGABYTE Management Console web interface
Memory	12-Channel DDR5 RDIMM, 96 x DIMMs [EPYC 9005] Up to 6400 MT/s [EPYC 9004] Up to 4800 MT/s	System Fans	4 x 80x80x80mm (16,900rpm)
LAN	8 x 1Gb/s LAN (4 x Intel® I350-AM2), Support NCSI 4 x 10/100/1000 Mbps Management LAN	Operating Properties	Operating: 10°C to 35°C, 8% to 80% (non-condensing) Non-operating: -40°C to 60°C, 20% to 95% (non-condensing)
Video	Integrated in ASPEED® AST2600 x 4 - 4 x Mini-DP	Packaging Content	1 x H273-Z81-AAN1 8 x CPU heatsinks 1 x Mini-DP to D-Sub cable 1 x 3-Section Rail kit
Storage	<b>Front hot-swap:</b> 8 x 2.5" Gen4 NVMe/SATA/SAS <sup>[1]</sup> <b>Optional internal M.2:</b> 4 x M.2 (2280/22110), PCIe Gen4 x4 <sup>[1]</sup> SAS card is required to support SAS drives.	Ordering Part Numbers	6NH273Z81DR000ACN1*
RAID	Require RAID add-in cards	Optional Parts	- M.2 expansion card - CMTP192: 9CMTP192NR-00*



Learn more at: <https://www.gigabyte.com/Enterprise>

\* All specifications are subject to change without notice. Please visit our website for the latest information.  
\* All trademarks and logos are the properties of their respective holders.

© 2025 Giga Computing Technology Co., Ltd. All rights reserved.

Designed by

