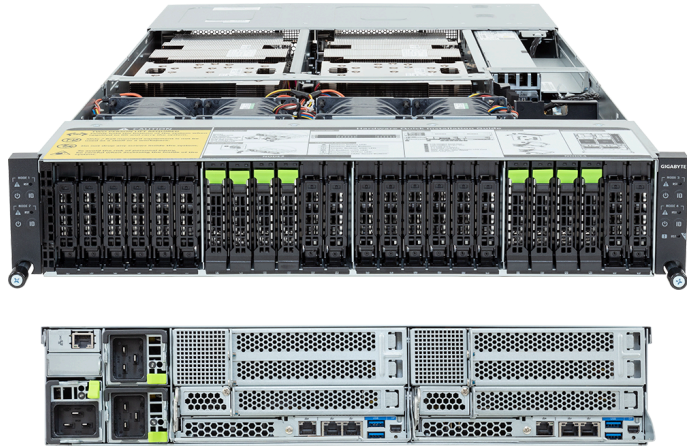


# H223-V10-AAW1

HPC/AI Arm Server - 2U 2-Node 8-Bay Gen5 NVMe



## Key Features

- CPU+GPU design for giant-scale AI and HPC
- 2U 2-node rear access server system
- NVIDIA GH200 Grace Hopper Superchip
- 900GB/s NVIDIA® NVLink®-C2C Interconnect
- 480GB CPU LPDDR5X ECC memory per module
- Up to 144GB GPU HBM3e per module
- 4 x 10Gb/s LAN ports via Intel® X550-AT2
- 1 x CMC port
- 8 x 2.5" Gen5 NVMe hot-swap bays
- 4 x 2.5" Gen5 NVMe hot-swap bays via NVIDIA BlueField®-3 DPUs (optional)
- 4 x M.2 slots with PCIe Gen5 x4 interface
- 2 x FHHL Dual slot PCIe Gen5 x16 slots
- 2 x FHHL Single slot PCIe Gen5 x16 slots
- 2 x OCP NIC 3.0 Gen5 x16 slots
- 2+1 3000W 80 PLUS Titanium redundant power supplies

## Specification

Dimensions	2U 2-Node - Rear access (W440 x H87.5 x D850 mm)	I/O Ports	<b>Front:</b> 1 x CMC status LED, 1 x CMC reset button <b>Rear:</b> 4 x USB 3.2 Gen1, 2 x Mini-DP, 4 x RJ45, 2 x MLAN, 1 x CMC port
Motherboard	MV13-HD0	Backplane Board	PCIe Gen5 x4
CPU	<b>Per node:</b> NVIDIA GH200 Grace Hopper Superchip: - 1 x NVIDIA Grace™ CPU - 1 x NVIDIA Hopper™ GPU - Connected with NVIDIA® NVLink®-C2C - TDP up to 1000W (CPU + GPU + memory)	TPM	1 x TPM header (SPI), Optional TPM2.0 kit: CTM012
OS Compatibility	<a href="#">OS Support List</a>	Power Supply	2+1 3000W 80 PLUS Titanium redundant power supplies AC Input: 100-240V *The system power supply requires C19 power cord.
Memory	<b>Per node:</b> NVIDIA Grace CPU: - 480GB of LPDDR5X memory with ECC - Memory bandwidth up to 512GB/s  NVIDIA Hopper GPU: - 96GB HBM3 (or 144GB HBM3e) - Memory bandwidth up to 4TB/s (or 4.9TB/s)	System Management	ASPEED® AST2600 Baseboard Management Controller ASPEED® AST2520 Chassis Management Controller GIGABYTE Management Console web interface
Lan	4 x 10Gb/s LAN (2 x Intel® X550-AT2), Support NCSI 2 x 10/100/1000 Mbps Management LAN 1 x CMC Management LAN	System Fans	4 x 80x80x80mm (16,500rpm)
Video	Integrated in ASPEED® AST2600 x 2 - 2 x Mini-DP	Operating Properties	Operating: 10°C~35°C, 8%~80% (non-condensing) Non-operating: -40°C~60°C, 20%~95% (non-condensing)
Storage	<b>Front hot-swap:</b> 8 x 2.5" Gen5 NVMe <b>Optional front hot-swap:</b> 4 x 2.5" Gen5 NVMe <sup>[1]</sup> <b>Internal M.2:</b> 4 x M.2 (2280/22110), PCIe Gen5 x4 <sup>[1]</sup> Requires optional NVIDIA BlueField®-3 DPUs.	Packaging Content	1 x H223-V10-AAW1 4 x Superchip heatsinks 1 x Mini-DP to D-Sub cable 1 x 3-Section Rail kit
PCIe Expansion Slots	8 x FHHL PCIe Gen5 x16 2 x OCP NIC 3.0 PCIe Gen5 x16	Ordering Part Numbers	6NH223V10MR000AAW1*
		Optional Parts	- C19 power cord 125V/15A (US): 25CP1-018000-Q0R - C19 power cord 250V/16A (EU): 25CP3-01830H-Q0R - C19 power cord 125V/15A (JP): 25CPA-01830B-Q0R



Learn more at: <https://www.gigabyte.com/Enterprise>

\* All specifications are subject to change without notice. Please visit our website for the latest information.  
\* All trademarks and logos are the properties of their respective holders.

© 2025 Giga Computing Technology Co., Ltd. All rights reserved.

Designed by

