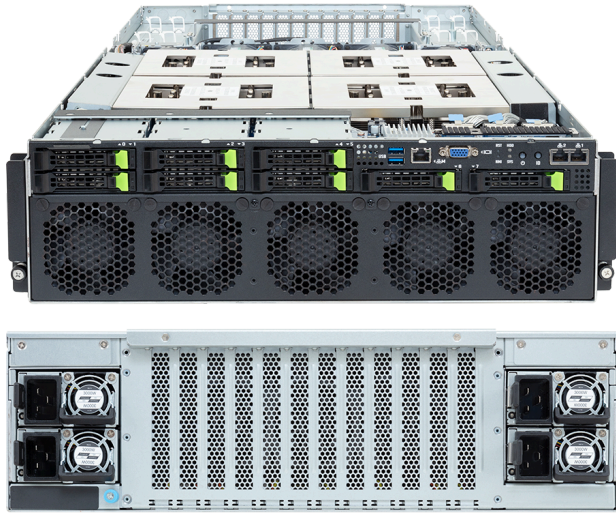


G383-R80-AAP1

HPC/AI Server - 3U 8-Bay Gen5 NVMe



Key Features

- 4 x AMD Instinct™ MI300A APUs
- 128GB HBM3 per APU
- Dual ROM Architecture
- 2 x 10Gb/s LAN ports via Broadcom® BCM57416
- 1 x M.2 slot with PCIe Gen5 x4 interface
- 8 x 2.5" Gen5 NVMe bays
- 4 x FHFL Dual-slot PCIe Gen5 x16 slots
- 4 x FHFL Single-slot PCIe Gen5 x16 slots
- 3+1 3000W 80 PLUS Titanium redundant power supplies

Applications

AI Platform, AI Training Server, AI Inference Server, High-Performance Computing Server...

Specification

Dimensions	3U (W447 x H131 x D950 mm)	PCIe Expansion Slots	4 x FHFL Dual-slot PCIe Gen5 x16 4 x FHFL Single-slot PCIe Gen5 x16
Motherboard	MR83-AC0	I/O Ports	Front: 2 x USB 3.2 Gen1, 1 x VGA, 2 x RJ45, 1 x MLAN
APU	4 x AMD Instinct™ MI300A APUs - 24 x Zen4 CPU cores per APU - 228 x CDNA3 compute units per APU - TDP up to 550W (CPU + GPU + memory) - Peak up to 760W	Backplane Board	PCIe Gen5 x4
OS Compatibility	OS Support List	TPM	1 x TPM header (SPI), Optional TPM2.0 kit: CTM010
Socket	4 x Socket SH5	Power Supply	3+1 3000W 80 PLUS Titanium redundant power supplies AC Input: 100-240V *The system power supply requires C19 power cord.
Chipset	System on Chip	System Management	ASPEED® AST2600 Baseboard Management Controller GIGABYTE Management Console web interface
Memory	128GB HBM3 unified memory Memory bandwidth 5.3TB/s	System Fans	2 x 60x60x56mm 8 x 80x80x80mm
LAN	2 x 10Gb/s LAN (1 x Broadcom® BCM57416), Support NCSI 1 x 10/100/1000 Mbps Management LAN	Operating Properties	Operating: 10°C to 35°C, 8% to 80% (non-condensing) Non-operating: -40°C to 60°C, 20% to 95% (non-condensing)
Video	Integrated in ASPEED® AST2600 - 1 x VGA port	Packaging Content	1 x G383-R80-AAP1 4 x APU heatsinks 1 x L-shape Rail kit
Storage	Front: 8 x 2.5" Gen5 NVMe Internal M.2: 1 x M.2 (2280/22110), PCIe Gen5 x4	Ordering Part Numbers	6NG383R80DR000AAP1*
RAID	Require RAID add-in cards		



Learn more at: <https://www.gigabyte.com/Enterprise>

* All specifications are subject to change without notice. Please visit our website for the latest information.
* All trademarks and logos are the properties of their respective holders.

© 2025 Giga Computing Technology Co., Ltd. All rights reserved.

Designed by

