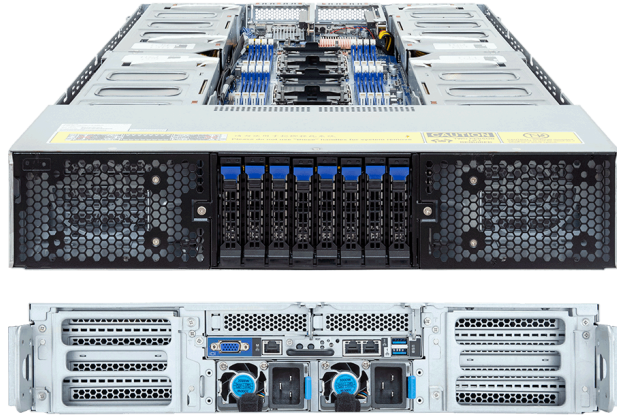


G293-S45-IAP1

HPC/AI Server - 2U DP 8 x PCIe Gen5 GPUs Immersion



Key Features

- Immersion Cooling Server
- Supports up to 8 x Dual slot Gen5 GPUs
- Dual 5th/4th Gen Intel® Xeon® Scalable Processors
- Dual Intel® Xeon® CPU Max Series
- 8-Channel DDR5 RDIMM, 16 x DIMMs
- Dual ROM Architecture
- 2 x 10Gb/s LAN ports via Broadcom® BCM57416
- 8 x 2.5" SATA/SAS hot-swap bays
- 8 x FHFL PCIe Gen5 x16 slots for GPUs
- 2 x LP PCIe Gen5 x16 slots
- Dual 3000W 80 PLUS Titanium redundant power supply

Applications

AI Platform, AI Training Server, AI Inference Server, Visual Computing, High-Performance Computing Server...

Specification

Dimensions	2U (W448 x H87.5 x D800 mm)	PCIe Expansion Slots	8 x FHFL PCIe Gen5 x16, for GPUs 2 x LP PCIe Gen5 x16
Motherboard	MS43-G21	I/O Ports	Top: 2 x USB 3.2 Gen1, 1 x VGA, 2 x RJ45, 1 x MLAN
CPU	5th Generation Intel® Xeon® Scalable Processors 4th Generation Intel® Xeon® Scalable Processors Intel® Xeon® CPU Max Series Dual processor, TDP up to 350W	Backplane Board	PCIe Gen4 x4 or SATA 6Gb/s or SAS 12Gb/s
OS Compatibility	OS Support List	TPM	1 x TPM header (SPI), Optional TPM2.0 kit: CTM010
Socket	2 x LGA 4677 (Socket E)	Power Supply	Dual 3000W 80 PLUS Titanium redundant power supply AC Input: 100-240V *The system power supply requires C19 power cord.
Chipset	Intel® C741	System Management	ASPEED® AST2600 Baseboard Management Controller GIGABYTE Management Console web interface
Memory	8-Channel DDR5 RDIMM, 16 x DIMMs [5th Gen Intel Xeon] Up to 5600 MT/s [4th Gen Intel Xeon] Up to 4800 MT/s [Intel Xeon Max Series] Up to 4800 MT/s	Operating Properties	Operating coolant temperature: 25°C to 35°C Non-operating: -40°C to 60°C, 20% to 95% (non-condensing)
LAN	2 x 10Gb/s LAN (1 x Broadcom® BCM57416), Support NCSI 1 x 10/100/1000 Mbps Management LAN	Packaging Content	1 x G293-S45-IAP1 2 x CPU heatsinks 4 x GPU power cables (16-pin, 250mm) 4 x GPU power cables (16-pin, 280mm) 6 x Carriers
Video	Integrated in ASPEED® AST2600 - 1 x VGA port	Ordering Part Numbers	6NG293S45DR000IBP1*
Storage	Bottom hot-swap: 8 x 2.5" Gen4 NVMe/SATA/SAS ^{[1][2]} ^[1] SAS card is required to support SAS drives. ^[2] NVMe support requires additional NVMe cables and occupies PCIe slots.	Optional Parts	- NVMe cable (MCIO 8i to 2 x MCIO 4i): 25CF9-350705-A4R - NVMe cable (MCIO 4i to MCIO 4i): 25CF9-700050-A4R
RAID	Intel® SATA RAID 0/1/10/5 Onboard VROC key header Support optional RAID add-in cards		



Learn more at: <https://www.gigabyte.com/Enterprise>

* All specifications are subject to change without notice. Please visit our website for the latest information.
* All trademarks and logos are the properties of their respective holders.

© 2025 Giga Computing Technology Co., Ltd. All rights reserved.

Designed by

