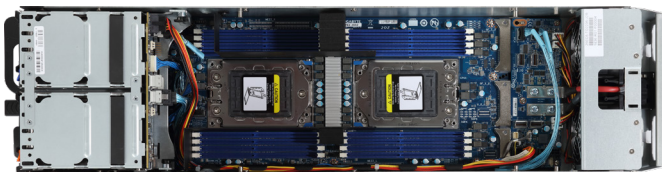


T022-Z61

RACKLUTION-OP: Compute Nodes



Features

- Dual AMD EPYC™ 7001 series processor family
- 8-Channel RDIMM/LRDIMM DDR4, 16 x DIMMs
- 2 x 1Gb/s LAN ports (Intel® I350-AM2)
- 1 x Dedicated management port
- 2 x 2.5" hybrid NVMe/SATA/SAS and 2 x 2.5" SATA/SAS hot-swap bays
- 2 x PCIe Gen3 expansion slots
- 1 x OCP Gen3 x16 mezzanine slot
- Aspeed® AST2500 remote management controller

RACKLUTION-OP is GIGABYTE's server product line based on OCP Open Rack Standards. The products are designed for a 21" OCP rack and feature a separate PSU system, with power supplied to each server node by a bus-bar system running along the rear of the rack.

What is the Open Compute Project?

The **Open Compute Project** (OCP) is an open source initiative launched in 2011 by Facebook with the purpose to design and share innovative specifications for better datacenters. Part of this initiative has been a set of standards released by the members of the OCP, called the **Open Rack Standards**, that contain design guidelines and specifications in order to create more efficient, flexible, and scalable datacenter hardware.

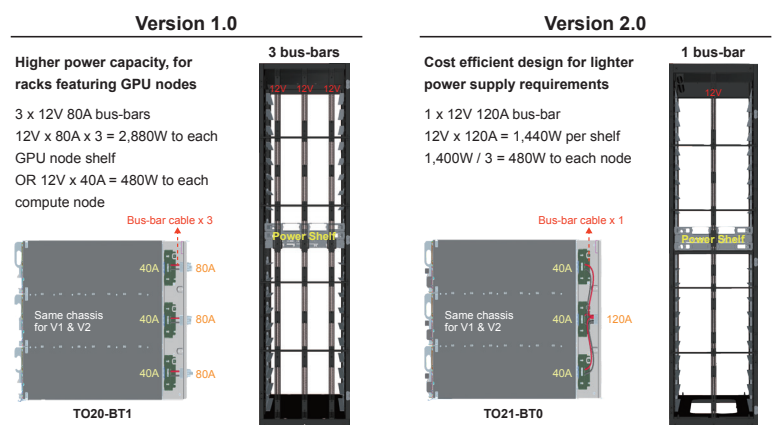


RACKLUTION-OP Advantages

- **Efficient Rack Density**
 - Optimal design (20U 3nodes) - balanced consideration between density and power consumption.
- **Thermal Optimization**
 - Best thermal consideration to develop Rack and Nodes based on Cold Aisle/Hot Aisle concept.
 - Reduce power consumption of cooling.
- **Greater Power Efficiency**
 - Low PUE helps reduce data center operating expense.
 - Central power shelf design to enhance power efficiency and optimize power consumption .
- **Easy Maintenance**
 - Easier maintenance in front cold aisle instead of hot aisle.
 - Tool-less design for easy replacement and repair.
 - Less PSU quantities in whole rack to minimize maintenance efforts.
- **Higher MTBF (Mean Time Between Failures)**
 - Centralizing power supplies and removing unnecessary components to enhance MTBF.
 - Avoids system downtime caused by component failure and minimizes maintenance efforts.
- **Converged Server Applications**
 - Suitable for software-defined applications, Intel RSD compatible.

RACKLUTION-OP Version 1.0 VS Version 2.0

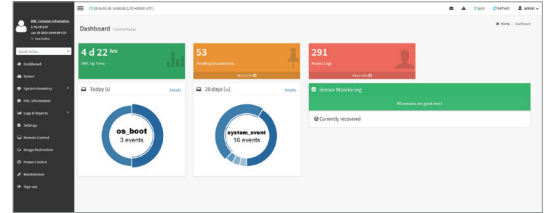
GIGABYTE currently has released two versions of RACKLUTION-OP products – Version 1.0 and Version 2.0. The difference is the design of the power distribution system: a triple bus-bar power distribution system (Version 1.0) or a single bus-bar power distribution system (Version 2.0). Both systems can co-exist with each other, and customers can choose the design version based on their preference and requirements.



GIGABYTE Management Console (AMI MegaRAC SP-X)

This GIGABYTE server product utilizes a AMI MegaRAC SP-X platform for BMC server management, with a feature rich and easy to use browser-based graphical user interface. Notable features include:

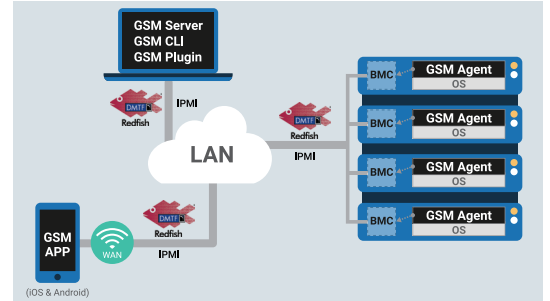
- **RESTful API support** (including the latest DMTF standards of Redfish) allows the administrator to integrate with 3rd party applications for server management
- **HTML5-based iKVM** remote management client included as a standard feature, no additional add-on license required to purchase
- **Detailed FRU information** from SMBIOS
- **Pre-event automatic video recording** feature from 10 to 30 seconds
- **SAS / RAID controller monitoring** feature



GIGABYTE Server Management (GSM)

GIGABYTE Server Management (GSM) is GIGABYTE's proprietary multiple server remote management software platform, available as a free download from each GIGABYTE server product page. GSM is compatible with either IPMI or Redfish (RESTful API) connection interfaces, and comprises the following sub-programs:

- **GSM Server**
- **GSM CLI**
- **GSM Agent**
- **GSM Mobile**
- **GSM Plugin**



Specification

Dimensions (WxHxD)	3 Nodes/ 20U 180 x 90 x 690	Front I/O	2 x USB 3.0, 1 x VGA, 2 x RJ45, 1 x MLAN, 1 x Power button with LED, 1 x ID button with LED, 8 x HDD LED, 1 x System status LED
Motherboard	MZ61-HD2	Rear I/O	-
CPU	AMD EPYC™ 7001 series processor families	Backplane I/O	6Gb/s, 12Gb/s, NVMe
Socket	2 x LGA 4094	TPM	1 x TPM header
Chipset	SoC	System Management	Aspeed® AST2500 management controller GIGABYTE Management Console (AMI MegaRAC SP-X) GIGABYTE Server Management (GSM)
Memory	16 x DIMM slots DDR4 memory supported only 8-Channel memory architecture RDIMM modules up to 64GB supported LRDIMM modules up to 128GB supported Memory speed: 2666(1DPC)/2400/2133 MHz	OS Compatibility	Windows Server 2016 (X2APIC/256T not supported) Windows Server 2019 Red Hat Enterprise Linux 7.6 (x64) or later Red Hat Enterprise Linux 8.0 (x64) or later SUSE Linux Enterprise Server 12 SP4 (x64) or later SUSE Linux Enterprise Server 15 SP1 (x64) or later Ubuntu 16.04.6 LTS (x64) or later Ubuntu 18.04.3 LTS (x64) or later VMware ESXi 6.5 EP15 or later VMware ESXi 6.7 Update3 or later Citrix Hypervisor 8.1.0
LAN	2 x 1GbE LAN ports (1 x Intel® I350-AM2) 1 x 10/100/1000 management LAN	Weight	Net Weight: 6.24 kg Gross Weight: 11.1 kg
Video	Integrated in Aspeed® AST2500 2D Video Graphic Adapter with PCIe bus interface 1920x1200@60Hz 32bpp, DDR4 SDRAM	Operating Properties	Operating temperature: 10°C to 35°C Operating humidity: 8%-80% (non-condensing) Non-operating temperature: -40°C to 60°C Non-operating humidity: 20%-95% (non-condensing)
Storage	Front side: 2 x 2.5" hybrid NVMe/SATA/SAS + 2 x 2.5" SATA/SAS hot-swap bays	Fan Module	2 x 80x80x38mm (14900rpm) fan modules per nodes
SATA Drives	4	Part Numbers	6NTO22Z61MR-00
SAS Drives	Add-on card available		
NVMe Drives	2		
RAID	Optional		
Expansion Slots	2 x PCIe x16 (Gen3 x16) slots, Low profile, half length 1 x OCP mezzanine slot (Gen3 x16)		

* All specifications are subject to change without notice. Please visit our website for the latest information.

* AMD, and the AMD Arrow logo, AMD EPYC, AMD Radeon Instinct and combinations thereof are trademarks of Advanced Micro Devices, Inc.

