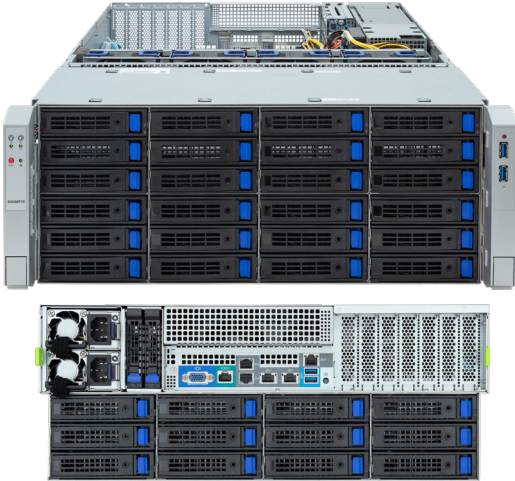


# S453-S70-AAV1

Storage Server - 4U DP 36+2-Bay SATA/SAS



## Features

- Dual 5th/4th Gen Intel® Xeon® Scalable Processors
- 8-Channel DDR5 RDIMM, 32 x DIMMs
- 2 x 10Gb/s LAN ports via Intel® X710-AT2
- 2 x 1Gb/s LAN ports via Intel® I210-AT
- 24 x 3.5"/2.5" SATA/SAS hot-swappable bays on the front side
- 12 x 3.5"/2.5" SATA/SAS hot-swappable bays on the rear side
- 2 x 2.5" SATA/SAS bays on rear side for boot drives
- SAS expander with 12Gb/s transfer speed
- 2 x M.2 slots with PCIe Gen4 x4 interface
- 6 x LP PCIe Gen5 x16 slots
- Dual 1600W 80 PLUS Titanium redundant power supply

## Specification

<b>Dimensions</b>	4U (W482.6 x H177 x D625 mm)	<b>I/O Ports</b>	Front: 2 x USB 3.2 Gen1 Rear: 2 x USB 3.2 Gen1, 1 x VGA, 1 x COM, 4 x RJ45, 1 x MLAN Internal: 1 x TPM header, 1 x VROC connector
<b>Motherboard</b>	MS73-HB0	<b>Backplane Board</b>	Front - CBPD400: SATA 6Gb/s or SAS 12Gb/s Rear - CBP2021: SATA 6Gb/s or SAS 12Gb/s Rear - CBPD0C0: SATA 6Gb/s or SAS 12Gb/s
<b>CPU</b>	5th Generation Intel® Xeon® Scalable Processors 4th Generation Intel® Xeon® Scalable Processors Dual processor, TDP up to 270W	<b>Power Supply</b>	Dual 1600W 80 PLUS Titanium redundant power supply AC Input: 100-240V
<b>Socket</b>	2 x LGA 4677 (Socket E)	<b>System Management</b>	ASPEED® AST2600 management controller GIGABYTE Management Console (AMI MegaRAC SP-X)
<b>Chipset</b>	Intel® C741 Chipset	<b>OS Compatibility</b>	Windows Server 2019 / 2022 RHEL 8.6 / 8.7 / 8.8 / 8.9 / 8.10 / 9.0 / 9.1 / 9.2 / 9.3 / 9.4 SLES 15 SP4 / SP5 / SP6 Ubuntu 22.04 / 22.04.1 / 22.04.2 / 22.04.3 / 22.04.4 / 24.04 LTS VMware ESXi 7.0 Update 30 / 8.0 Update 1, Update 2, Update 3 Citrix Hypervisor 8.2 LTSR CU1
<b>Memory</b>	16 x DIMM slots, 8-Channel DDR5 memory RDIMM up to 96GB supported Memory speed: Up to 5600 MT/s	<b>System Fans</b>	4 x 80x80x38mm (16,300rpm)
<b>LAN</b>	2 x 10Gb/s LAN ports (1 x Intel® X710-AT2) 2 x 1Gb/s LAN ports (2 x Intel® I210-AT) Support NCSI function (by switch setting) 1 x 10/100/1000 Mbps Management LAN	<b>Operating Properties</b>	Operating temperature: 10°C to 35°C Operating humidity: 8-80% (non-condensing) Non-operating temperature: -40°C to 60°C Non-operating humidity: 20%-95% (non-condensing)
<b>Video</b>	ASPEED® AST2600 Integrated 2D Graphic Adapter	<b>Packaging Content</b>	1 x S453-S70-AAV1, 2 x CPU heatsinks, 6 x Carrier clips, 1 x 3-Section Rail kit Packaging Dimensions: 843 x 610 x 290 mm
<b>Storage</b>	Front: 24 x 3.5"/2.5" SATA/SAS hot-swappable bays Rear: 12 x 3.5"/2.5" SATA/SAS hot-swappable bays 2 x 2.5" SATA/SAS bays for boot drives  1 x Broadcom SAS35x48 expanders Bandwidth: SATA 6Gb/s or SAS 12Gb/s per port SAS card is required to enable the drive bays Recommended SAS cards: CSA4710, CRA4760, CRA4761	<b>Part Numbers</b>	Barebone package (5th/4th Gen): 6NS453S70MR000ABV1* Barebone package (4th Gen): 6NS453S70MR000AAV1* - 3-Section Rail kit: 25HB2-3A6104-I0R - CPU heatsink: 25ST1-323208-AOR - Power supply: 25EP0-21600D-G1S
<b>RAID</b>	Depends on SAS add-in cards		
<b>Expansion Slots</b>	6 x LP PCIe Gen5 x16 slots 2 x M.2 slots (M-key, PCIe Gen4 x4, support 2280/22100 cards)		
<b>TPM</b>	1 x TPM header with SPI interface (Optional TPM2.0 kit: CTM010)		



Learn more at <https://www.GIGABYTE.com/enterprise>

\* All specifications are subject to change without notice. Please visit our website for the latest information.  
\* Intel, the Intel logo, Xeon, and other Intel marks are trademarks of Intel Corporation or its subsidiaries.  
\* All other brands, logos and names are property of their respective owners.

© 2024 Giga Computing Technology Co., Ltd. All rights reserved.

Designed by

