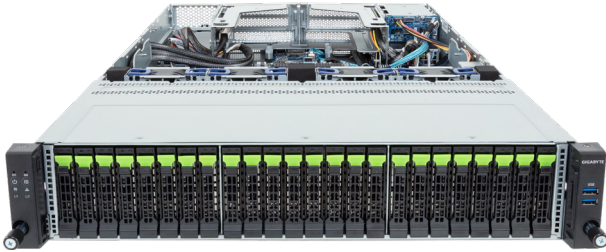


R284-S92-AAJ1

Rack Server - 2U DP 2U DP 24+2-Bay NVMe/SATA



Key Features

- Dual Intel® Xeon® 6 Processors, LGA 4710
- 8-Channel DDR5 RDIMM / MCR DIMM, 32 x DIMMs
- Dual ROM Architecture
- 2 x 1Gb/s LAN ports via Intel® I350-AM2
- 24 x 2.5" Gen5 NVMe/SATA/SAS-4 hot-swappable bays
- 2 x 2.5" SATA/SAS-4 hot-swappable bays on the rear side
- 2 x M.2 slot with PCIe Gen5 x4 interface
- 2 x FHHL Dual-slot PCIe Gen5 x16 slots
- 1 x FHHL Single-slot PCIe Gen5 x16 slot
- 1 x OCP 3.0 Gen5 x16 slot
- 1+1 2000W 80 PLUS Titanium redundant power supplies

Application

Networking, Hybrid/Private Cloud Server...

Specification

Dimensions	2U (W438 x H87.5 x D815 mm)
Motherboard	MS94-FS0
CPU	Intel® Xeon® 6 Processors - Intel® Xeon® 6700E-Series Processors - Intel® Xeon® 6700P-Series Processors - Intel® Xeon® 6500P-Series Processors Dual processors, TDP up to 350W
Sock	2 x LGA 4710 (Socket E2)
Chipset	System on Chip
Memory	8-Channel DDR5 RDIMM / MCR DIMM, 32 x DIMM slots RDIMM: Up to 6400 MT/s (1DPC), 5200 MT/s (2DPC) MCR DIMM: Up to 8000 MT/s (*MCR DIMMs are only supported with Intel Xeon 6 Processors with P-cores and in a 1DPC configuration.)
LAN	2 x 1Gb/s LAN ports (1 x Intel® I350-AM2) - supports NCSI function 1 x 10/100/1000 Mbps Management LAN
Storage	Front: 24 x 2.5" Gen5 NVMe/SATA/SAS-4* hot-swappable bays Rear: 2 x 2.5" SATA/SAS-4* hot-swappable bays *Storage card is required to support SATA and SAS drives.
RAID	Require RAID add-in cards
Expansion Slots	2 x FHHL Dual-slot PCIe Gen5 x16 slots 1 x FHHL Single-slot PCIe Gen5 x16 slot 1 x OCP 3.0 Gen5 x16 slot (supports NCSI function) 2 x M.2 slots (M-key, PCIe Gen5 x4, support 2280/22110 cards)
I/O Ports	Front: 2 x USB 3.2 Gen1 Rear: 2 x USB 3.2 Gen1, 1 x Mini-DP, 2 x RJ45, 1 x MLAN Internal: 1 x TPM header, 1 x PRoT connector, 1 x VROC connector

Video	ASPEED® AST2600 Integrated 2D Graphic Adapter
Backplane Board	Front - CBP2081: PCIe Gen5 x4 or SATA 6Gb/s or SAS-4 24Gb/s Front - CBP20G0: PCIe Gen5 x4 or SATA 6Gb/s or SAS-4 24Gb/s Rear - CBP2025: SATA 6Gb/s or SAS-4 24Gb/s
Security Modules	1 x TPM header with SPI interface - Optional TPM2.0 kit: CTM012 1 x PRoT module connector (M.2 M-key) - Optional PRoT module (AST1060 solution): CSC1200
Power Supply	1+1 2000W 80 PLUS Titanium redundant power supplies AC Input: 100-240V
System Management	ASPEED® AST2600 management controller GIGABYTE Management Console (AMI MegaRAC SP-X)
System Fans	4 x 80x80x38mm (16,000rpm)
Operating Properties	Operating temperature: 10°C to 35°C Operating humidity: 8%-80% (non-condensing) Non-operating temperature: -40°C to 60°C Non-operating humidity: 20%-95% (non-condensing)
Packaging Content	1 x R284-S92-AAJ1 2 x CPU heatsinks 1 x Mini-DP to D-Sub cable 4 x Carriers 1 x 2-Section Rail kit
Part Numbers	Barebone package: 6NR284S92DR000AAJ1* - 2-Section Rail kit (CMA not supported): 25HB2-3A0206-K0R - CPU heatsink: 25ST1-323208-A0R - Mini-DP to D-Sub cable: 25CRN-200801-K1R - Power supply: 25EP0-22000L-G1S



Learn more about GIGABYTE server at <https://www.gigabyte.com/Enterprise>

- * All specifications are subject to change without notice. Please visit our website for the latest information.
- * Intel, the Intel logo, Xeon, and other Intel marks are trademarks of Intel Corporation or its subsidiaries.
- * All other brands, logos and names are property of their respective owners.

© 2024 Giga Computing Technology Co., Ltd. All rights reserved.

Designed by

