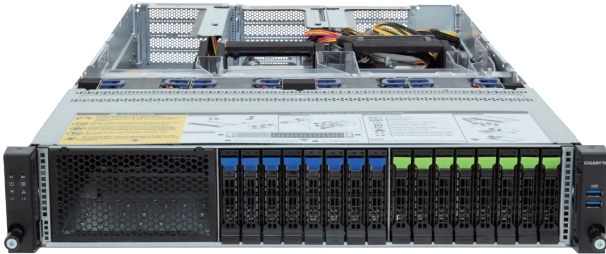


R283-ZF1-AAL1

Rack Server - 2U DP 4 x PCIe Gen5 GPUs



Key Features

- Supports up to 4 x Dual slot Gen5 GPUs
- Dual AMD EPYC™ 9005/9004 Series Processors
- 12-Channel DDR5 RDIMM, 24 x DIMMs
- Dual ROM Architecture
- 4 x 2.5" Gen5 NVMe/SATA/SAS-4 hot-swap bays
- 4 x 2.5" Gen5 NVMe hot-swap bays
- 8 x 2.5" SATA/SAS-4 hot-swap bays
- 4 x FHFL PCIe Gen5 x16 slots for GPUs
- 1 x FHHL PCIe Gen5 x16 slot
- 1 x OCP NIC 3.0 PCIe Gen5 x16 slot
- Dual 2700W 80 PLUS Titanium redundant power supply

Application

AI, AI Inference, Visual Computing, HPC, Networking, Hybrid/Private Cloud Server

Specification

| | | | |
|------------------------|---|-----------------------------|--|
| Dimensions | 2U (W438 x H87.5 x D815mm) | Backplane Board | Speed and bandwidth: PCIe Gen5 x4 or SATA 6Gb/s or SAS-4 24Gb/s |
| Motherboard | MZF3-GP0 | Security Modules | 1 x TPM header with SPI interface - Optional TPM2.0 kit: CTM010 |
| CPU | AMD EPYC™ 9005 Series Processors AMD EPYC™ 9004 Series Processors Dual processor, cTDP up to 500W | Power Supply | Dual 2700W 80 PLUS Titanium redundant power supply AC Input: 100-240V The system power supply requires C19 power cord. |
| Sock | 2 x LGA 6096 (Socket SP5) | System Management | ASPEED® AST2600 Baseboard Management Controller GIGABYTE Management Console web interface |
| Chipset | System on Chip | OS Support | Windows Server, Red Hat Enterprise Linux server, Ubuntu, SUSE Linux Enterprise server, VMware ESXi, Citrix Hypervisor |
| Memory | 12-Channel DDR5 RDIMM, 24 x DIMMs [EPYC 9005] Up to 6000 MT/s [EPYC 9004] Up to 4800 MT/s | System Fans | 1 x 40x40x28mm (34,000rpm), 4 x 80x80x56mm (15,500rpm) |
| LAN | 1 x 10/100/1000 Mbps Management LAN | Operating Properties | Operating temperature: 10°C to 30°C Operating humidity: 8%-80% (non-condensing) Non-operating temperature: -40°C to 60°C Non-operating humidity: 20%-95% (non-condensing) |
| Video | Integrated in ASPEED® AST2600 1 x Mini-DP | Packaging Content | 1 x R283-ZF1-AAL1, 2 x CPU heatsinks, 4 x GPU power cables 1 x Mini-DP to D-Sub cable, 1 x 2-Section Rail kit Packaging Dimensions: 1077 x 679 x 300 mm |
| Storage | Front hot-swap: 4 x 2.5" Gen5 NVMe/SATA/SAS-4 4 x 2.5" Gen5 NVMe 8 x 2.5" SATA/SAS-4 *SAS card is required to support SAS drives. | Part Numbers | Barebone package: 6NR283ZF1DR000ACL1* Optional parts: - C19 power cord 125V/15A (US): 25CP1-018000-Q0R - C19 power cord 250V/16A (EU): 25CP3-01830H-Q0R - C19 power cord 125V/15A (JP): 25CPA-01830B-Q0R - 3-Section Rail kit (Supports CMA): 25HB2-A56121-K0R - Cable Management Arm: 25HB1-R18300-K0R - RMA packaging: 6NR283ZF1SR-RMA-A100 |
| RAID | Require RAID add-in cards | | |
| Expansion Slots | 4 x FHFL PCIe Gen5 x16 slots for GPUs 1 x FHHL PCIe Gen5 x16 slot 1 x OCP NIC 3.0 PCIe Gen5 x16 slot | | |
| I/O Ports | Front: 2 x USB 3.2 Gen1 Rear: 2 x USB 3.2 Gen1, 1 x Mini-DP, 1 x MLAN | | |



Learn more at <https://www.GIGABYTE.com/enterprise>

- * All specifications are subject to change without notice. Please visit our website for the latest information.
- * AMD, the AMD Arrow logo, EPYC and combinations thereof are trademarks of Advanced Micro Devices, Inc.
- * All other brands, logos and names are property of their respective owners.

© 2024 Giga Computing Technology Co., Ltd. All rights reserved.

Designed by

