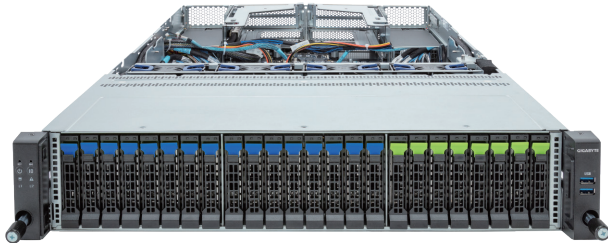


# R283-Z96-AAJ3

Rack Server - 2U DP 24-Bay NVMe/SATA



## Key Features

- Dual AMD EPYC™ 9004 Series Processors
- 12-Channel DDR5 RDIMM, 24 x DIMMs
- Dual ROM Architecture
- 2 x 1Gb/s LAN ports via Intel® I350-AM2
- 8 x 2.5" Gen5 NVMe hot-swap bays
- 16 x 2.5" SATA/SAS-4 hot-swap bays
- 3 x M.2 slots with PCIe Gen3 x4 and x2 interface
- 3 x FHHL PCIe Gen5 x16 slots
- 2 x OCP NIC 3.0 PCIe Gen5 x16 slots
- 1+1 2000W 80 PLUS Titanium redundant power supply

## Application

Networking, Hybrid/Private Cloud Server...

## Specification

<b>Dimensions</b>	2U (W438 x H873.5 x D815 mm)	<b>I/O Ports</b>	Front: 2 x USB 3.2 Gen1 Rear: 2 x USB 3.2 Gen1, 1 x Mini-DP, 2 x RJ45, 1 x MLAN
<b>Motherboard</b>	MZ93-FS1	<b>Backplane Board</b>	Speed and bandwidth: PCIe Gen5 x4 or SATA 6Gb/s or SAS-4 24Gb/s
<b>CPU</b>	AMD EPYC™ 9005 Series Processors AMD EPYC™ 9004 Series Processors Dual processors, cTDP up to 300W - EPYC 9654 cTDP up to 400W	<b>Security Modules</b>	1 x TPM header with SPI interface - Optional TPM2.0 kit: CTM010
<b>Sock</b>	2 x LGA 6096 (Socket SP5)	<b>Power Supply</b>	1+1 2000W 80 PLUS Titanium redundant power supply AC Input: 100-240V
<b>Chipset</b>	System on Chip	<b>System Management</b>	ASPEED® AST2600 Baseboard Management Controller GIGABYTE Management Console web interface
<b>Memory</b>	24 x DIMM slots 12-Channel DDR5 RDIMM Up to 4800 MT/s	<b>OS Support</b>	Windows Server, Red Hat Enterprise Linux server, Ubuntu, SUSE Linux Enterprise server, VMware ESXi, Citrix Hypervisor
<b>LAN</b>	2 x 1Gb/s LAN (1 x Intel® I350-AM2) - Supports NCSI function 1 x 10/100/1000 Mbps Management LAN	<b>System Fans</b>	4 x 80x80x38mm (18,300rpm)
<b>Video</b>	Integrated in ASPEED® AST2600 - 1 x Mini-DP	<b>Operating Properties</b>	Operating temperature: 10°C to 35°C Operating humidity: 8%-80% (non-condensing) Non-operating temperature: -40°C to 60°C Non-operating humidity: 20%-95% (non-condensing)
<b>Storage</b>	Front hot-swap: 8 x 2.5" Gen5 NVMe 16 x 2.5" SATA/SAS-4 *SAS card is required to support SAS drives.  Internal M.2: 2 x M.2 (2280/22110), PCIe Gen3 x4 1 x M.2 (2280/22110), PCIe Gen3 x2	<b>Packaging Content</b>	1 x R283-Z96-AAJ3, 2 x CPU heatsinks, 1 x Mini-DP to D-Sub cable, 1 x 2-Section Rail kit Packaging Dimensions: 1077 x 679 x 300 mm
<b>RAID</b>	Require RAID add-in cards	<b>Part Numbers</b>	Barebone package (EPYC 9005/9004): 6NR283Z96DR000ABJ3* Barebone package (EPYC 9004): 6NR283Z96DR000AAJ3*  Optional parts: - 3-Section Rail kit (Supports CMA): 25HB2-A56121-K0R - Cable Management Arm: 25HB1-R18300-K0R - RMA packaging: 6NR283Z96SR-RMA-A100
<b>Expansion Slots</b>	3 x FHHL PCIe Gen5 x16 slots 2 x OCP NIC 3.0 PCIe Gen5 x16 slots - Supports NCSI function		



Learn more at <https://www.GIGABYTE.com/enterprise>

\* All specifications are subject to change without notice. Please visit our website for the latest information.  
\* AMD, the AMD Arrow logo, EPYC and combinations thereof are trademarks of Advanced Micro Devices, Inc.  
\* All other brands, logos and names are property of their respective owners.

© 2024 Giga Computing Technology Co., Ltd. All rights reserved.

Designed by

