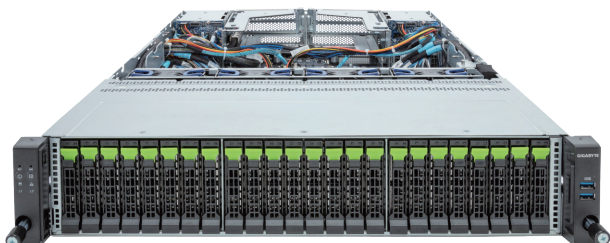


R283-Z96-AAJ1

Rack Server - 2U DP 24+4-Bay NVMe/SATA



Key Features

- Dual AMD EPYC™ 9004 Series Processors
- 12-Channel DDR5 RDIMM, 24 x DIMMs
- Dual ROM Architecture
- 2 x 1Gb/s LAN ports via Intel® I350-AM2
- 24 x 2.5" Gen5 NVMe hot-swap bays
- 4 x 2.5" SATA/SAS-4 hot-swap bays on the rear side
- 2 x M.2 slots with PCIe Gen3 x4 and x2 interface
- 1 x FHHL PCIe Gen5 x16 slot
- 1 x OCP NIC 3.0 PCIe Gen5 x16 slot
- Compatible with SupremeRAID™ by Graid Technology
- 1+1 2000W 80 PLUS Titanium redundant power supply

Application

Networking, Hybrid/Private Cloud Server...

Specification

| | | | |
|------------------------|--|-----------------------------|--|
| Dimensions | 2U (W438 x H87.5 x D815 mm) | I/O Ports | Front: 2 x USB 3.2 Gen1 Rear: 2 x USB 3.2 Gen1, 1 x Mini-DP, 2 x RJ45, 1 x MLAN |
| Motherboard | MZ93-FS1 | Backplane Board | Front - CBP2081 & CBP20G: PCIe Gen5 x4 Rear - CBP2025: SATA 6Gb/s or SAS-4 24Gb/s |
| CPU | AMD EPYC™ 9005 Series Processors AMD EPYC™ 9004 Series Processors Dual processors, cTDP up to 300W - EPYC 9654 cTDP up to 400W | Security Modules | 1 x TPM header with SPI interface - Optional TPM2.0 kit: CTM010 |
| Socket | 2 x LGA 6096 (Socket SP5) | Power Supply | Dual 2000W 80 PLUS Titanium redundant power supply AC Input: 100-240V |
| Chipset | System on Chip | System Management | ASPEED® AST2600 Baseboard Management Controller GIGABYTE Management Console web interface |
| Memory | 24 x DIMM slots 12-Channel DDR5 RDIMM Up to 4800 MT/s | OS Support | Windows Server, Red Hat Enterprise Linux server, Ubuntu, SUSE Linux Enterprise server, VMware ESXi, Citrix Hypervisor |
| LAN | 2 x 1Gb/s LAN (1 x Intel® I350-AM2) - Supports NCSI function 1 x 10/100/1000 Mbps Management LAN | System Fans | 4 x 80x80x38mm (18,300rpm) |
| Video | Integrated in ASPEED® AST2600 - 1 x Mini-DP | Operating Properties | Operating temperature: 10°C to 35°C Operating humidity: 8%-80% (non-condensing) Non-operating temperature: -40°C to 60°C Non-operating humidity: 20%-95% (non-condensing) |
| Storage | Front hot-swap: 24 x 2.5" Gen5 NVMe Rear hot-swap: 4 x 2.5" SATA/SAS-4 *SAS card is required to support SAS drives. Internal M.2: 1 x M.2 (2280/22110), PCIe Gen3 x4 1 x M.2 (2280/22110), PCIe Gen3 x2 | Packaging Content | 1 x R283-Z96-AAJ1, 2 x CPU heatsinks, 1 x Mini-DP to D-Sub cable, 1 x 2-Section Rail kit Packaging Dimensions: 1077 x 679 x 300 mm |
| RAID | Require RAID add-in cards Optional compatible RAID Cards: GRAID SupremeRAID™ SR-1000-FD32, SR-1010-FD32 NVMe/NVMe-oF RAID Cards Support RAID 0/1/5/6/10 | Part Numbers | Barebone package (EPYC 9005/9004): 6NR283Z96DR000ABJ1* Barebone package (EPYC 9004): 6NR283Z96DR000AAJ1* Optional parts: - RAID card (SR-1000-FD32): 25FC1-SRBUN0-AFS - RAID card (SR-1010-FD32): 25FC1-SRBUN4-AFR - 3-Section Rail kit (Supports CMA): 25HB2-A56121-K0R - Cable Management Arm: 25HB1-R18300-K0R - RMA packaging: 6NR283Z96SR-RMA-A100 |
| Expansion Slots | 1 x FHHL PCIe Gen5 x16 slot 1 x OCP NIC 3.0 PCIe Gen5 x16 slot - Supports NCSI function | | |



Learn more at <https://www.GIGABYTE.com/enterprise>

* All specifications are subject to change without notice. Please visit our website for the latest information.
* AMD, the AMD Arrow logo, EPYC and combinations thereof are trademarks of Advanced Micro Devices, Inc.
* All other brands, logos and names are property of their respective owners.

© 2024 Giga Computing Technology Co., Ltd. All rights reserved.

Designed by

