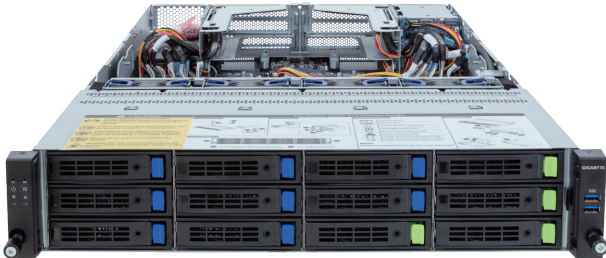


R283-Z95-AAD1

Rack Server - 2U DP 14-Bay with expander



Key Features

- Dual AMD EPYC™ 9005/9004 Series Processors
- 12-Channel DDR5 RDIMM, 24 x DIMMs
- Dual ROM Architecture
- 2 x 1Gb/s LAN ports via Intel® I350-AM2
- 4 x 3.5"/2.5" Gen5 NVMe/SATA/SAS-4 hot-swap bays
- 8 x 3.5"/2.5" SATA/SAS-4 hot-swap bays
- 2 x 2.5" SATA/SAS-4 hot-swap bays on the rear side
- Onboard 24Gb/s SAS-4 expander
- 3 x M.2 slots with PCIe Gen3 x4 and x2 interface
- 5 x FHHL PCIe Gen5 x16 slots
- 2 x OCP NIC 3.0 PCIe Gen5 x16 slots
- Dual 1600W 80 PLUS Platinum redundant power supply

Application

Networking, Hybrid/Private Cloud Server...

Specification

Dimensions	2U (W438 x H87.5 x D815 mm)
Motherboard	MZ93-FS1
CPU	AMD EPYC™ 9005 Series Processors AMD EPYC™ 9004 Series Processors Dual processors, cTDP up to 400W - cTDP up to 500W with optional heatsink
Sock	2 x LGA 6096 (Socket SP5)
Chipset	System on Chip
Memory	12-Channel DDR5 RDIMM, 24 x DIMMs [EPYC 9005] Up to 6000 MT/s [EPYC 9004] Up to 4800 MT/s
LAN	2 x 1Gb/s LAN (1 x Intel® I350-AM2) - Supports NCSI function 1 x 10/100/1000 Mbps Management LAN
Video	Integrated in ASPEED® AST2600 - 1 x Mini-DP
Storage	Front hot-swap: 4 x 3.5"/2.5" Gen5 NVMe/SATA/SAS-4 8 x 3.5"/2.5" SATA/SAS-4 Rear hot-swap: 2 x 2.5" SATA/SAS-4 *Storage card is required to enable SATA and SAS drives. Broadcom SAS4x32 expander Internal M.2: 2 x M.2 (2280/22110), PCIe Gen3 x4 1 x M.2 (2280/22110), PCIe Gen3 x2
RAID	Require RAID add-in cards
Expansion Slots	4 x FHHL PCIe Gen5 x16 slots 2 x OCP NIC 3.0 PCIe Gen5 x16 slots - Supports NCSI function

I/O Ports	Front: 2 x USB 3.2 Gen1 Rear: 2 x USB 3.2 Gen1, 1 x Mini-DP, 2 x RJ45, 1 x MLAN
Backplane Board	Front - CBP21C4: PCIe Gen5 x4 or SATA 6Gb/s or SAS-4 24Gb/s Rear - CBP2025: SATA 6Gb/s or SAS-4 24Gb/s
Security Modules	1 x TPM header with SPI interface - Optional TPM2.0 kit: CTM010
Power Supply	Dual 1600W 80 PLUS Platinum redundant power supply AC Input: 100-240V
System Management	ASPEED® AST2600 Baseboard Management Controller GIGABYTE Management Console web interface
OS Support	Windows Server, Red Hat Enterprise Linux server, Ubuntu, SUSE Linux Enterprise server, VMware ESXi, Citrix Hypervisor
System Fans	4 x 80x80x38mm (18,300rpm)
Operating Properties	Operating temperature: 10°C to 35°C Operating humidity: 8%-80% (non-condensing) Non-operating temperature: -40°C to 60°C Non-operating humidity: 20%-95% (non-condensing)
Packaging Content	1 x R283-Z95-AAD1, 2 x CPU heatsinks, 1 x Mini-DP to D-Sub cable, 1 x 2-Section Rail kit Packaging Dimensions: 1077 x 679 x 300 mm
Part Numbers	Barebone package: 6NR283Z95DR000ACD1* Optional parts: - 3-Section Rail kit (Supports CMA): 25HB2-A56121-K0R - Cable Management Arm: 25HB1-R18300-K0R - CPU heatsink (500W): 25ST1-563400-C1R - RMA packaging: 6NR283Z95SR-RMA-A100



Learn more at <https://www.GIGABYTE.com/enterprise>

* All specifications are subject to change without notice. Please visit our website for the latest information.
* AMD, the AMD Arrow logo, EPYC and combinations thereof are trademarks of Advanced Micro Devices, Inc.
* All other brands, logos and names are property of their respective owners.

© 2024 Giga Computing Technology Co., Ltd. All rights reserved.

Designed by

