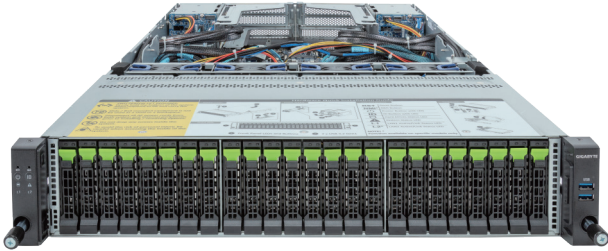


R283-Z92-AAE1

Rack Server - 2U DP 24+4-Bay NVMe/SATA



Key Features

- Dual AMD EPYC™ 9004 Series Processors
- 12-Channel DDR5 RDIMM, 24 x DIMMs
- Dual ROM Architecture
- 2 x 1Gb/s LAN ports via Intel® I350-AM2
- 12 x 2.5" Gen4 NVMe/SATA/SAS hot-swap bays
- 12 x 2.5" Gen4 NVMe hot-swap bays
- 4 x 2.5" SATA/SAS hot-swap bays on the rear side
- 2 x FHHL PCIe Gen5 x16 slots
- Compatible with SupremeRAID™ by Graid Technology
- 1+1 2000W 80 PLUS Platinum redundant power supplies

Application

Networking

Specification

Dimensions	2U (W438 x H87 x D815 mm)
Motherboard	MZ93-FS0
CPU	AMD EPYC™ 9005 Series Processors AMD EPYC™ 9004 Series Processors Dual processor, cTDP up to 300W - EPYC 9654 cTDP up to 400W
Sock	2 x LGA 6096 (Socket SP5)
Chipset	System on Chip
Memory	12-Channel DDR5 RDIMM, 24 x DIMMs Up to 4800 MT/s
LAN	2 x 1Gb/s LAN (1 x Intel® I350-AM2) - Supports NCSI function 1 x 10/100/1000 Mbps Management LAN
Video	Integrated in ASPEED® AST2600 - 1 x Mini-DP
Storage	Front hot-swap: 12 x 2.5" Gen4 NVMe/SATA/SAS + 12 x 2.5" Gen4 NVMe Rear hot-swap: 4 x 2.5" SATA/SAS *SAS card is required to support SAS drives.
RAID	Require RAID add-in cards Optional compatible RAID cards: NVMe/NVMe-oF RAID Cards with SupremeRAID™ by Graid RAID Card models: SR-1000-ED12, SR-1000-FD32 Support RAID 0/1/5/6/10
Expansion Slots	2 x FHHL PCIe Gen5 x16 slots

I/O Ports	Front: 2 x USB 3.2 Gen1 Rear: 2 x USB 3.2 Gen1, 1 x Mini-DP, 2 x RJ45, 1 x MLAN
Backplane Board	Front - CBP20C5: PCIe Gen4 x4 or SATA 6Gb/s or SAS 12Gb/s Rear - CBP2022: SATA 6Gb/s or SAS 12Gb/s
Security Modules	1 x TPM header with SPI interface (Optional TPM2.0 kit: CTM010)
Power Supply	1+1 2000W 80 PLUS Platinum redundant power supplies AC Input: 100-240V
System Management	ASPEED® AST2600 Baseboard Management Controller GIGABYTE Management Console web interface
OS Support	Windows Server, Red Hat Enterprise Linux server, Ubuntu, SUSE Linux Enterprise server, VMware ESXi, Citrix Hypervisor
System Fans	4 x 80x80x38mm (18,300rpm)
Operating Properties	Operating temperature: 10°C to 35°C Operating humidity: 8%-80% (non-condensing) Non-operating temperature: -40°C to 60°C Non-operating humidity: 20%-95% (non-condensing)
Packaging Content	1 x R283-Z92-AAE1, 2 x CPU heatsinks, 1 x Mini-DP to D-Sub cable, 1 x 2-Section Rail kit Packaging Dimensions: 1077 x 679 x 300 mm
Part Numbers	Barebone package (EPYC 9005/9004): 6NR283Z92DR000ABE1* Barebone package (EPYC 9004): 6NR283Z92DR000AAE1* Optional parts: - RAID card (SR-1000-ED12): 25FC1-SRBUN3-AFS - RAID card (SR-1000-FD32): 25FC1-SRBUN0-AFS - 3-Section Rail kit (Supports CMA): 25HB2-A56121-K0R - Cable Management Arm: 25HB1-R18300-K0R - RMA packaging: 6NR283Z92SR-RMA-A100



Learn more at <https://www.GIGABYTE.com/enterprise>

* All specifications are subject to change without notice. Please visit our website for the latest information.
* AMD, the AMD Arrow logo, EPYC and combinations thereof are trademarks of Advanced Micro Devices, Inc.
* All other brands, logos and names are property of their respective owners.

© 2024 Giga Computing Technology Co., Ltd. All rights reserved.

Designed by

