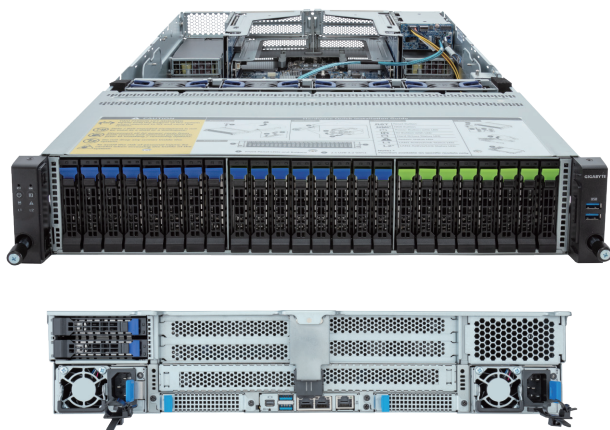


# R283-S98-AAE2

Rack Server - 2U DP 24+2-Bay NVMe/SATA/SAS4 with expander

intel  
XEON



## Features

- Dual 5th/4th Gen Intel® Xeon® Scalable Processors
- Dual Intel® Xeon® CPU Max Series
- 8-Channel DDR5 RDIMM, 32 x DIMMs
- Dual ROM Architecture supported
- 2 x 1Gb/s LAN ports via Intel® I350-AM2
- 8 x 2.5" Gen5 NVMe/SATA/SAS-4 hot-swappable bays
- 16 x 2.5" SATA/SAS-4 hot-swappable bays
- 2 x 2.5" SATA/SAS-4 hot-swappable bays on the rear side
- Onboard 24Gb/s SAS-4 expander
- 4 x FHHL PCIe Gen5 x16 slots
- 2 x OCP 3.0 Gen5 x16 slots
- 1+1 2000W 80 PLUS Platinum redundant power supplies

## Specification

<b>Dimensions</b>	2U (W438 x H87.5 x D815 mm)	<b>I/O Ports</b>	Front: 2 x USB 3.2 Gen1 Rear: 2 x USB 3.2 Gen1, 1 x Mini-DP, 2 x RJ45, 1 x MLAN Internal: 1 x TPM header, 1 x VROC connector
<b>Motherboard</b>	MS93-FS0	<b>Backplane Board</b>	Front - CBP20G0: PCIe Gen5 x4 or SATA 6Gb/s or SAS-4 24Gb/s Front - CBP2081: PCIe Gen5 x4 or SATA 6Gb/s or SAS-4 24Gb/s Rear - CBP2025: SATA 6Gb/s or SAS-4 24Gb/s
<b>CPU</b>	5th Generation Intel® Xeon® Scalable Processors 4th Generation Intel® Xeon® Scalable Processors Intel® Xeon® CPU Max Series Dual processor, TDP up to 350W	<b>Power Supply</b>	1+1 2000W 80 PLUS Platinum redundant power supplies AC Input: 100-240V
<b>Socket</b>	2 x LGA 4677 (Socket E)	<b>System Management</b>	ASPEED® AST2600 management controller GIGABYTE Management Console (AMI MegaRAC SP-X)
<b>Chipset</b>	Intel® C741 Chipset	<b>OS Compatibility</b>	Windows Server 2019 / 2022 RHEL 8.6 / 8.7 / 8.8 / 8.9 / 8.10 / 9.0 / 9.1 / 9.2 / 9.3 / 9.4 SLES 15 SP4 / SP5 / SP6 Ubuntu 22.04 / 22.04.1 / 22.04.2 / 22.04.3 / 22.04.4 / 24.04 LTS VMware ESXi 7.0 Update 3o / 8.0 Update 1, Update 2, Update 3 Citrix Hypervisor 8.2 LTSR CU1
<b>Memory</b>	32 x DIMM slots, 8-Channel DDR5 memory RDIMM up to 96GB supported 3DS RDIMM up to 256GB supported Memory speed: Up to 5600 MT/s (1DPC), 4400 MT/s (2DPC)	<b>System Fans</b>	4 x 80x80x38mm (18,300rpm)
<b>LAN</b>	2 x 1Gb/s LAN ports (1 x Intel® I350-AM2) - Supported NCSI 1 x 10/100/1000 management LAN	<b>Operating Properties</b>	Operating temperature: 10°C to 35°C Operating humidity: 8-80% (non-condensing) Non-operating temperature: -40°C to 60°C Non-operating humidity: 20%-95% (non-condensing)
<b>Video</b>	ASPEED® AST2600 Integrated 2D Graphic Adapter	<b>Packaging Content</b>	1 x R283-S98-AAE2, 2 x CPU heatsinks, 6 x Carrier clips, 1 x Mini-DP to D-Sub cable, 1 x 2-Section Rail kit Packaging Dimensions: 1077 x 679 x 300 mm
<b>Storage</b>	8 x 2.5" Gen5 NVMe/SATA/SAS-4 hot-swappable bays 16 x 2.5" SATA/SAS-4 hot-swappable bays 2 x 2.5" SATA/SAS4 hot-swappable bays on rear side Broadcom SAS4x48 expander Bandwidth: SATA 6Gb/s or SAS-4 24Gb/s per port SAS card is required to enable SATA/SAS drives All SATA/SAS devices are connected to SAS expander	<b>Part Numbers</b>	Barebone package (5th/4th Gen): 6NR283S98DR000ABE2* Barebone package (4th Gen): 6NR283S98DR000AAE2* - 2-Section Rail kit (CMA not supported): 25HB2-3A0206-K0R - CPU heatsink: 25ST1-323208-A0R - Power supply: 25EP0-22000A-L0S
<b>RAID</b>	Depends on SAS add-in cards		
<b>Expansion Slots</b>	4 x FHHL PCIe Gen5 x16 slots 2 x OCP 3.0 Gen5 x16 slots - Supporte NCSI function		
<b>TPM</b>	1 x TPM header with SPI interface (Optional TPM2.0 kit: CTM010)		



Learn more at <https://www.GIGABYTE.com/enterprise>

\* All specifications are subject to change without notice. Please visit our website for the latest information.  
\* Intel, the Intel logo, Xeon, and other Intel marks are trademarks of Intel Corporation or its subsidiaries.  
\* All other brands, logos and names are property of their respective owners.

© 2024 Giga Computing Technology Co., Ltd. All rights reserved.

Designed by

