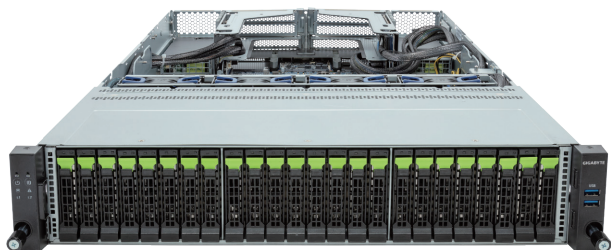


R283-P92-AAL1

Rack Server - 2U DP 24-Bay NVMe/SATA



Features

- Dual AmpereOne® Family Processors
- 8-Channel DDR5 RDIMM, 32 x DIMMs
- Dual ROM Architecture
- 2 x 1Gb/s LAN ports via Intel® I350-AM2
- 12 x 2.5" Gen5 NVMe/SATA/SAS-4 hot-swap bays
- 12 x 2.5" Gen5 NVMe hot-swap bays
- 1 x M.2 slot with PCIe Gen5 x4 interface
- 4 x FHHL PCIe Gen5 x16 and x8 slots
- 1 x OCP NIC 3.0 PCIe Gen5 x16 slot
- 2 x 2700W 80 PLUS Titanium redundant power supply

Application

Networking, Hybrid/Private Cloud Server...

Specification

Dimensions	2U (W438 x H87.5 x D815 mm)	I/O Ports	Front: 2 x USB 3.2 Gen1 Rear: 2 x USB 3.2 Gen1, 2 x RJ45, 1 x Mini-DP, 1 x MLAN
Motherboard	MP93-FS0	Backplane Board	Speed and bandwidth: PCIe Gen5 x4 or SATA 6Gb/s or SAS-4 24Gb/s
CPU	AmpereOne® Family Processors Up to 192 custom cores Dual processor, TDP up to 400W	Security Modules	1 x TPM header with SPI interface - Optional TPM2.0 kit: CTM010
Sock	2 x LGA 5964	Power Supply	2 x 2700W 80 PLUS Titanium redundant power supply AC Input: 100-240V *The system power supply requires C19 power cord.
Chipset	System on Chip	System Management	ASPEED® AST2600 Baseboard Management Controller GIGABYTE Management Console web interface
Memory	32 x DIMM slots 8-Channel DDR5 memory architecture RDIMM: Up to 5200 MT/s, 4400 MT/s (2R 2DPC)	System Fans	4 x 80x80x38mm (18,300rpm)
LAN	2 x 1Gb/s LAN (1 x Intel® I350-AM2)- Supports NCSI function 1 x 10/100/1000 Mbps management LAN	Operating Properties	Operating temperature: 10°C to 35°C Operating humidity: 8%-80% (non-condensing) Non-operating temperature: -40°C to 60°C Non-operating humidity: 20%-95% (non-condensing)
Video	Integrated in ASPEED® AST2600 - 1 x Mini-DP	Packaging Content	1 x R283-P92-AAL1, 2 x CPU heatsinks, 2 x Carriers, 1 x Mini-DP to D-Sub cable, 1 x 2-Section Rail kit Packaging Dimensions: 1077 x 679 x 300 mm
Storage	Front hot-swap: 12 x 2.5" Gen5 NVMe/SATA/SAS-4* 12 x 2.5" Gen5 NVMe *SAS card is required to support SAS drives. Internal M.2: 1 x M.2 (2242/2260/2280/22110), PCIe Gen5 x4	Part Numbers	Barebone package: 6NR283P92DR000ABL1* Optional parts: - C19 power cord 125V/15A (US): 25CP1-018000-Q0R - C19 power cord 250V/16A (EU): 25CP3-01830H-Q0R - C19 power cord 125V/15A (JP): 25CPA-01830B-Q0R - 3-Section Rail kit (Supports CMA): 25HB2-A56121-K0R - Cable Management Arm: 25HB1-R18300-K0R - RMA packaging: 6NR283P92SR-RMA-A100
RAID	Require RAID add-in cards		
Expansion Slots	3 x FHHL PCIe Gen5 x16 slots 1 x FHHL PCIe Gen5 x8 slot 2 x OCP NIC 3.0 PCIe Gen5 x16 slots		



Learn more at <https://www.GIGABYTE.com/enterprise>

* All specifications are subject to change without notice. Please visit our website for the latest information.
* Ampere, AmpereOne and Ampere logos are registered trademarks or trademarks of Ampere Computing.
* All other brands, logos and names are property of their respective owners.

© 2024 Giga Computing Technology Co., Ltd. All rights reserved.

Designed by

