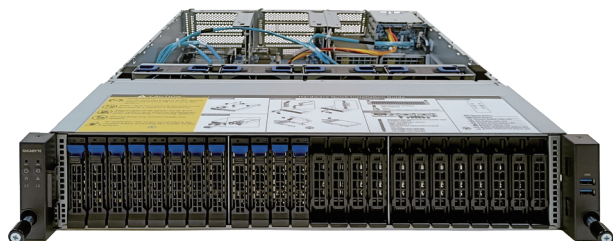
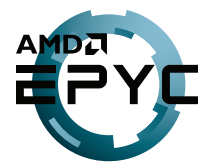


R282-Z97

2U DP Rack Server - Compatible with Tri-Mode NVMe Storage Adapters



Features

- Dual AMD EPYC™ 7003 Series processors
- 8-Channel RDIMM/LRDIMM DDR4, 32 x DIMMs
- Dual ROM Architecture supported
- 2 x 1Gb/s LAN ports
- 1 x dedicated management port
- 12 x 2.5" SATA/SAS hot-swap SSD bays in front side
- Upgradable for 24 x 2.5" Gen4 NVMe drives in front side
- 2 x 2.5" SATA hot-swap HDD/SSD bays in rear side
- Ultra-Fast M.2 with PCIe Gen4 x4 interface
- 8 x PCIe Gen4 expansion slots
- 1 x OCP 3.0 Gen4 x16 mezzanine slot
- 1 x OCP 2.0 Gen3 x8 mezzanine slot
- 1600W (240V) 80 PLUS Platinum redundant power supply

Specification

Dimensions	2U (W438 x H87 x D730 mm)	Backplane I/O	Front side_CBP2009: 24 x SATA/SAS/Gen4 NVMe ports Rear side_CBP2022: 2 x SATA/SAS ports
Motherboard	MZ92-FS2 Rev. 3.0	TPM	1 x TPM header with SPI interface, optional TPM2.0 kit: CTM010
CPU	AMD EPYC™ 7003 processors with AMD 3D V-Cache™ Technology AMD EPYC™ 7003 Series processors Dual processors, 7nm, Socket SP3, cTDP up to 280W Up to 64-core, 128 threads per processor Compatible with AMD EPYC™ 7002 Series processors	Power Supply	1+1 1600W 80 PLUS Platinum redundant power supply AC Input: 100-240V
Chipset	System on Chip	System Management	Aspeed® AST2600 management controller GIGABYTE Management Console (AMI MegaRAC SP-X)
Memory	8-Channel DDR4 memory, 32 x DIMM slots RDIMM/LRDIMM modules up to 128GB supported Memory speed: Up to 3200 MHz	OS Compatibility	Windows Server 2016 / 2019 / 2022 RHEL 8.3 (x64) or later SLES 12 SP5 (x64) / 15 SP2 (x64) or later Ubuntu 18.04.5 LTS (x64) / 20.04 LTS (x64) or later VMware ESXi 6.7 Update3 P03 / 7.0 Update1 or later Citrix Hypervisor 8.2.0 or later
LAN	2 x 1Gb/s LAN ports (Intel® I350-AM2) 1 x 10/100/1000 management LAN	System Fans	4 x 80x80x38mm (16,300rpm)
Video	Integrated in Aspeed® AST2600 2D Video Graphic Adapter with PCIe bus interface 1920x1200@60Hz 32bpp, DDR4 SDRAM	Operating Properties	Operating temperature: 10°C to 35°C Operating humidity: 8-80% (non-condensing) Non-operating temperature: -40°C to 60°C Non-operating humidity: 20%-95% (non-condensing)
Storage	Front side: Default 12 x 2.5" SATA/SAS hot-swap HDD/SSD bays Upgradable for 24 x 2.5" Gen4 NVMe hot-swap SSD bays Rear side: 2 x 2.5" SATA hot-swap HDD/SSD bays SAS card is required for SAS devices support	Packaging Content	1 x R282-Z97 system, 2 x CPU heatsinks. 1 x Rail kit
Expansion Slots	2 x PCIe x16 slots (Gen4 x16), FHHL 4 x PCIe x8 slots (Gen4 x8), FHHL 2 x PCIe x8 slots (Gen4 x8), HHHL 1 x M.2 slot (Gen4 x4)	Reference Numbers	Barebone package: 6NR282Z97MR-00 Rev. A00 - Motherboard: 9MZ92FS2NR-00 - Rail kit: 25HB2-3A0202-K0R - CPU heatsink: 25ST1-15320E-J1R - Power supply: 25EP0-216008-L0S - Tri-Mode kit-A 600mm - 6NR282Z9HSR-00 (optional) - Tri-Mode kit-B 720mm - 6NR282Z9ISR-00 (optional) - Tri-Mode kit-C 760mm - 6NR282Z9JSR-00 (optional)
Front I/O	2 x USB 3.0		
Rear I/O	2 x USB 3.0, 1 x VGA, 2 x RJ45, 1 x MLAN		



Learn more about GIGABYTE server solutions, visit www.gigabyte.com/Enterprise

* All specifications are subject to change without notice. Please visit our website for the latest information.

* AMD, and the AMD Arrow logo, AMD EPYC and combinations thereof are trademarks of Advanced Micro Devices, Inc.

* All other brands, logos and names are property of their respective owners.

© 2022 GIGABYTE Technology Co., Ltd. All rights reserved.