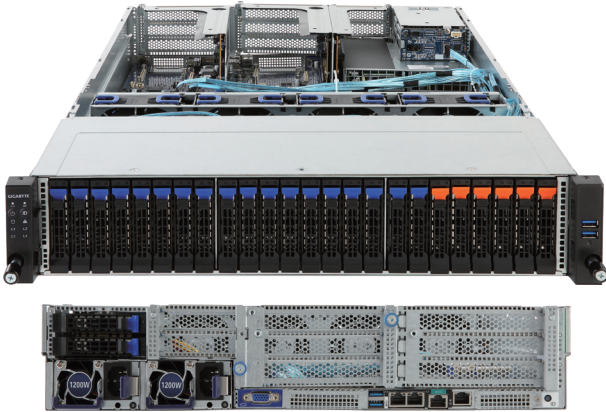
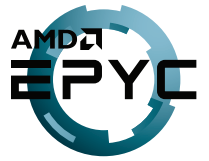


# R281-Z91

Rack Server - 2U DP 26-Bay



## Features

- Dual AMD EPYC™ 7003 Series processors
- 8-Channel RDIMM/LRDIMM DDR4 per processor, 32 x DIMMs
- 2 x 1Gb/s LAN ports (Intel® I350-AM2)
- 1 x Dedicated management port
- 6 x U.2, 20 x SATA/SAS 2.5" hot-swappable HDD/SSD bays
- Ultra-Fast M.2 with PCIe Gen3 x4 interface
- 7 x PCIe Gen3 expansion slots
- 2 x OCP Gen3 x16 mezzanine slots
- Aspeed® AST2500 remote management controller
- 1+1 1200W 80 PLUS Platinum redundant power supply

## Specification

<b>Dimensions</b>	1U (W438 x H43.5 x D710 mm)	<b>Backplane I/O</b>	Front side_CBP2005: 18 x SATA/SAS and 6 x NVMe ports Rear side_CBP2020: 2 x SATA/SAS ports (connected to SAS expander) Front side_CEP2600: 18 x SATA/SAS expander
<b>Motherboard</b>	MZ91-FS0 Rev. 3.0	<b>TPM</b>	1 x TPM header with LPC interface Optional TPM2.0 kit: CTM000
<b>CPU</b>	AMD EPYC™ 7003 Series processors Dual processors, 7nm technology, Socket SP3 Up to 64-core, 128 threads per processor TDP up to 225W, cTDP up to 240W, Fully support 280W Compatible with AMD EPYC™ 7002 Series processors	<b>Power Supply</b>	2 x 1200W 80 PLUS Platinum redundant power supply AC Input: 100-240V
<b>Chipset</b>	System on Chip	<b>System Management</b>	Aspeed® AST2500 management controller GIGABYTE Management Console (AMI MegaRAC SP-X)
<b>Memory</b>	8-Channel DDR4 memory, 32 x DIMM slots RDIMM/LRDIMM modules up to 128GB supported 3DS RDIMM/LRDIMM modules up to 256GB supported Memory speed: Up to 3200/2933 MHz	<b>OS Compatibility</b>	Windows Server 2016 / 2019 RHEL 8.3 (x64) or later SLES 12 SP5 (x64) / 15 SP2 (x64) or later Ubuntu 18.04.5 LTS (x64) / 20.04 LTS (x64) or later VMware ESXi 6.7 Update3 P03 / 7.0 Update1 or later Citrix Hypervisor 8.2.0 or later
<b>LAN</b>	2 x 1GbE LAN ports (1 x Intel® I350-AM2) 1 x 10/100/1000 management LAN	<b>System Fans</b>	4 x 80x80x38mm (16'300rpm)
<b>Video</b>	Integrated in Aspeed® AST2500 2D Video Graphic Adapter with PCIe bus interface 1920x1200@60Hz 32bpp	<b>Operating Properties</b>	Operating temperature: 10°C to 35°C Operating humidity: 8-80% (non-condensing) Non-operating temperature: -40°C to 60°C Non-operating humidity: 20%-95% (non-condensing)
<b>Storage</b>	Front side: 6 x U.2, 18 x SATA/SAS 2.5" hot-swap HDD/SSD bays Rear side: 2 x SATA/SAS 2.5" hot-swap HDD/SSD bays Default supports: 6 x U.2, 0 x SATA/SAS SAS card is required to enable the drive bays	<b>Packaging Content</b>	1 x R281-Z91, 2 x CPU heatsinks, 1 x Rail kit
<b>Expansion Slots</b>	2 x PCIe x16 slots (Gen3 x16 or x8), Full height half-length 2 x PCIe x8 slots (Gen3 x0 or x8), Full height half-length 1 x PCIe x8 slot (Gen3 x8), Full height half-length 1 x PCIe x16 slot (Gen3 x16 or x8), Low profile half-length 1 x PCIe x8 slot (Gen3 x0 or x8), Low profile half-length 2 x OCP 2.0 mezzanine slots (Gen3 x16) 1 x M.2 slot (Gen3 x4)	<b>Reference Numbers</b>	Barebone package: 6NR281Z91MR-00 Rev. B00 - Motherboard: 9MZ91FS0NR-00 Rev. 3.0 - Rail kit: 25HB2-3A0202-K0R - CPU heatsink: 25ST1-15320E-J1R - Back plane board_24-port: 9CBP2005NR-00 - Back plane board_2-port: 9CBP2020NR-00 - Back plane board_U.2 type: 9CEP2600NR-00 - Front panel board: 9CFP2001NR-00 - Power supply: 25EP0-212008-D0S
<b>Front I/O</b>	2 x USB 3.0		
<b>Rear I/O</b>	2 x USB 3.0, 1 x VGA, 1 x COM (RJ45), 2 x RJ45, 1 x MLAN		



Learn more about GIGABYTE server solutions, visit [www.gigabyte.com/Enterprise](http://www.gigabyte.com/Enterprise)

\* All specifications are subject to change without notice. Please visit our website for the latest information.

\* AMD, and the AMD Arrow logo, AMD EPYC and combinations thereof are trademarks of Advanced Micro Devices, Inc.

\* All other brands, logos and names are property of their respective owners.

© 2021 GIGABYTE Technology Co., Ltd. All rights reserved.