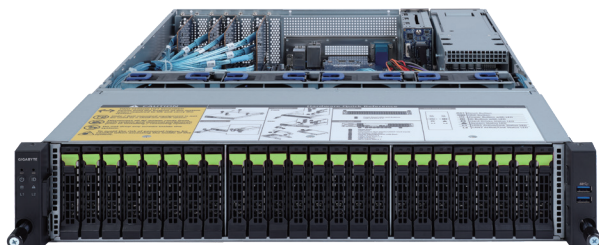
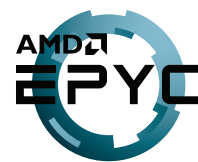


# R272-Z34

## Rack Server - 2U UP 26-Bay Gen4 NVMe



### Features

- Hardware-level root of trust support
- Supports GRAID SupremeRAID SR-1000 NVMe RAID card
- Single AMD EPYC™ 7003 Series processors
- 8-Channel RDIMM/LRDIMM DDR4, 16 x DIMMs
- 2 x 1Gb/s LAN ports (Intel® I350-AM2)
- 1 x Dedicated management port
- 24 x 2.5" Gen4 U.2 hot-swappable SSD bays in front side
- 2 x 2.5" SATA/SAS hot-swappable HDD/SSD bays in rear side
- Ultra-Fast M.2 with PCIe Gen4 x4 interface
- 1 x PCIe Gen4 x8 expansion slot
- 1+1 1200W (240V) 80 PLUS Platinum redundant power supply

### Specification

<b>Dimensions</b>	2U (W438 x H87.5 x D660 mm)	<b>TPM</b>	1 x TPM header with SPI interface Optional TPM2.0 kit: CTM010
<b>Motherboard</b>	MZ32-AR1 Rev. 3.0	<b>Power Supply</b>	Dual 1200W 80 PLUS Platinum redundant power supply AC Input: 100-240V
<b>CPU</b>	AMD EPYC™ 7003 Series processors Single processor, 7nm technology, cTDP up to 280W Up to 64-core, 128 threads per processor Compatible with AMD EPYC™ 7002 Series processors	<b>System Management</b>	Aspeed® AST2500 management controller GIGABYTE Management Console (AMI MegaRAC SP-X)
<b>Chipset</b>	System on Chip	<b>OS Compatibility</b>	Windows Server 2016 / 2019 RHEL 8.3 (x64) or later SLES 12 SP5 (x64) / 15 SP2 (x64) or later Ubuntu 18.04.5 LTS (x64) / 20.04 LTS (x64) or later VMware ESXi 6.7 Update3 P03 / 7.0 Update1 or later Citrix Hypervisor 8.2.0 or later
<b>Memory</b>	8-Channel DDR4 memory, 16 x DIMM slots RDIMM/LRDIMM modules up to 128GB supported 3DS RDIMM/LRDIMM modules up to 256GB supported Memory speed: Up to 3200/2933 MHz	<b>System Fans</b>	4 x 80x80x38mm (16,300rpm)
<b>LAN</b>	2 x 1GbE LAN ports (1 x Intel® I350-AM2) 1 x 10/100/1000 management LAN	<b>Operating Properties</b>	Operating temperature: 10°C to 35°C Operating humidity: 8%-80% (non-condensing) Non-operating temperature: -40°C to 60°C Non-operating humidity: 20%-95% (non-condensing)
<b>Video</b>	Integrated in Aspeed® AST2500 2D Video Graphic Adapter with PCIe bus interface 1920x1200@60Hz 32bpp	<b>Packaging Content</b>	1 x R272-Z34 system 1 x CPU heatsink 1 x Rail kit
<b>Storage</b>	Front side: 24 x 2.5" Gen4 U.2 hot-swappable SSD bays Rear side: 2 x 2.5" SATA/SAS hot-swappable HDD/SSD bays	<b>Reference Numbers</b>	Barebone package: 6NR272Z34MR-00 Rev. A00 - Motherboard: 9MZ32AR1NR-00 - Rail kit: 25HB2-3A0202-K0R - CPU heatsink: 25ST1-15320E-J1R - Power supply: 25EP0-212003-D0S - GRAID SupremeRAID Core Software Module License (optional): 25FC1-SRBUN1-AFS (4-native NVMe RAID) 25FC1-SRBUN2-AFS (8-native NVMe RAID) 25FC1-SRBUN3-AFS (12-native NVMe RAID) 25FC1-SRBUN0-AFS (32-native NVMe RAID)
<b>Expansion Slots</b>	1 x PCIe x16 slot (Gen4 x8), low profile 2 x M.2 slots - M-key, PCIe Gen4 x4, supports NGFF-2242/2260/2280 cards		
<b>Front I/O</b>	2 x USB 3.0		
<b>Rear I/O</b>	3 x USB 3.0, 1 x VGA, 1 x COM, 2 x RJ45, 1 x MLAN		
<b>Backplane I/O</b>	Front side_CBP2007: 24 x Gen4 U.2 ports Rear side_CBP2023: 2 x SATA/SAS ports Speed and bandwidth: SATA/ SAS/ PCIe Gen4 x4 per port		



Learn more about GIGABYTE server solutions, visit [www.gigabyte.com/Enterprise](http://www.gigabyte.com/Enterprise)

\* All specifications are subject to change without notice. Please visit our website for the latest information.

\* AMD, and the AMD Arrow logo, AMD EPYC and combinations thereof are trademarks of Advanced Micro Devices, Inc.

\* All other brands, logos and names are property of their respective owners.

© 2021 GIGABYTE Technology Co., Ltd. All rights reserved.