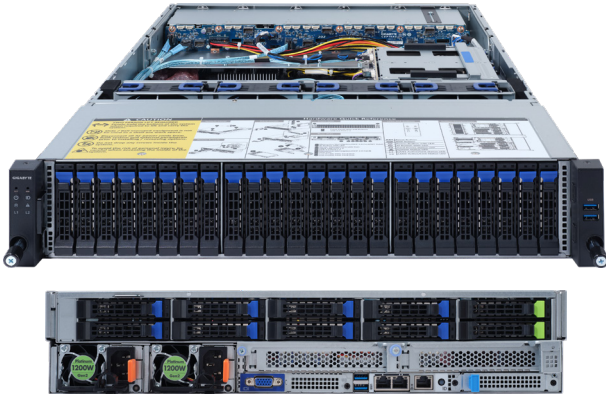


R262-ZA0

Rack Server - 1U UP 42-Bay



Features

- Hardware-level root of trust support
- Single AMD EPYC™ 7002 series processor family
- 8-Channel RDIMM/LRDIMM DDR4, 16 x DIMMs
- 2 x 1GbE LAN ports
- 1 x Dedicated management port
- 40 x 2.5" SATA/SAS hot-swappable SSD bays
- 2 x 2.5" Gen4 U.2 hot-swappable SSD bays
- Ultra-Fast M.2 with PCIe Gen4 x4 interface
- 2 x PCIe Gen4 x16 expansion slots
- 1 x OCP 3.0 Gen4 x16 mezzanine slot
- 1 x OCP 2.0 Gen3 x8 mezzanine slot
- Dual 1200W 80 PLUS Platinum redundant power supply

Specification

| | | | |
|------------------------|--|-----------------------------|--|
| Dimensions | 2U (W438 x H87.5 x D730 mm) | Rear I/O | 2 x USB 3.0, 1 x VGA, 2 x RJ45, 1 x MLAN |
| Motherboard | MZA2-CE0 | Backplane I/O | Front side_CBP2008: 24 x SATA/SAS ports Rear side_CBP10A5: 8 x SATA/SAS, 2 x U.2 ports Internal_CBP2080: 8 x SATA/SAS ports Speed and bandwidth:SAS 12Gb/s, SATA 6Gb/s |
| CPU | AMD EPYC™ 7002 series processor family Single processor, 7nm technology TDP up to 225W, cTDP up to 240W Conditional support 280W Compatible with AMD EPYC™ 7001 series processor family | TPM | 1 x TPM header with SPI interface Optional TPM2.0 kit: CTM010 |
| Chipset | System on Chip | Power Supply | Dual 1200W 80 PLUS Platinum redundant power supply |
| Memory | 8-Channel DDR4 memory, 16 x DIMM slots RDIMM/LRDIMM modules up to 128GB supported Memory speed: Up to 3200 / 2933 MHz | System Management | Aspeed® AST2500 management controller GIGABYTE Management Console (AMI MegaRAC SP-X) |
| LAN | 2 x 1GbE LAN ports (1 x Intel® I350-AM2) 1 x 10/100/1000 management LAN | OS Compatibility | Windows Server 2016 / 2019 RHEL 7.6 (x64) / 8.0 (x64) or later SLES 12 SP4 (x64) / 15 SP1 (x64) or later Ubuntu 16.04.6 LTS (x64) / 18.04.3 LTS (x64) / 20.04 LTS (x64) VMware ESXi 6.5 EP15 / 6.7 Update3 or later Citrix Hypervisor 8.1.0 or later |
| Video | Integrated in Aspeed® AST2500 2D Video Graphic Adapter with PCIe bus interface 1920x1200@60Hz 32bpp | Weight | Net Weight: 21.08 kg / Gross Weight: 30 kg |
| Storage | Front: 24 x 2.5" SATA/ SAS hot-swap SSD bays Rear: 8 x 2.5" SATA/ SAS, 2 x 2.5" Gen4 U.2 hot-swap SSD bays Internal: 8 x 2.5" SATA/ SAS hot-swap SSD bays SAS card is required for SAS devices support Broadcom SAS35x48 expander Default configuration supports: 0 x SATA/ SAS, 2 x U.2 drives Suggested 12Gb/s SAS cards: CRA4648, CSA4648 1 x M.2 slot: M-key, PCIe Gen4 x4 per slot - Supports NGFF-2280/22110 cards | System Fans | 4 x 80x80x38mm (16,300rpm), 2-ball |
| RAID | Depends on SAS add-on card | Operating Properties | Operating temperature: 10°C to 35°C Operating humidity: 8-80% (non-condensing) Non-operating temperature: -40°C to 60°C Non-operating humidity: 20%-95% (non-condensing) |
| Expansion Slots | Riser Card CRS101E: 1 x PCIe x16 slot (Gen4 x16), FHHL Riser Card CRS101E: 1 x PCIe x16 slot (Gen4 x8 or x16), FHHL 1 x OCP 3.0 mezzanine slot with PCIe Gen4 x16 bandwidth 1 x OCP 2.0 mezzanine slot with PCIe Gen3 x0 or x8 bandwidth | Packaging Dimensions | 982 x 588 x 268 mm |
| Internal I/O | 1 x M.2 slot, 1 x USB 3.0 header, 1 x COM header, 1 x TPM header, 1 x OCP 3.0 mezzanine slot, 1 x OCP 2.0 mezzanine slot, 1 x Front panel header, 1 x HDD back plane board header, 1 x PMBus connector, 1 x IPMB connector, 1 x Clear CMOS jumper, 1 x BIOS recovery jumper | Packaging Content | 1 x R262-ZA0, 1 x CPU heatsinks, 1 x Rail kit |
| Front I/O | 2 x USB 3.0 | Reference Numbers | Barebone package: 6NR262ZA0MR-00 - Motherboard: 9MZA2CE0NR-00 - Rail kit: 25HB2-3A0202-K0R - CPU heatsink: 25ST1-15320E-J1R - Front panel board: 9CFP2001NR-00 - Back plane board (Front): 9CBP2008NR-00 - Back plane board (Rear): 9CBP10A5NR-00 - Back plane board (Internal): 9CBP2080NR-00 - Power supply: 25EP0-212008-D0S - SAS Expander module: 9CEP26S0NR-00 - Riser card - CRS101E: 9CRS101ENR-00 |

* All specifications are subject to change without notice. Please visit our website for the latest information.

* AMD, and the AMD Arrow logo, AMD EPYC, AMD Radeon Instinct and combinations thereof are trademarks of Advanced Micro Devices, Inc.



www.gigabyte.com



gigabyteserver



@GIGABYTESERVER



GIGABYTE