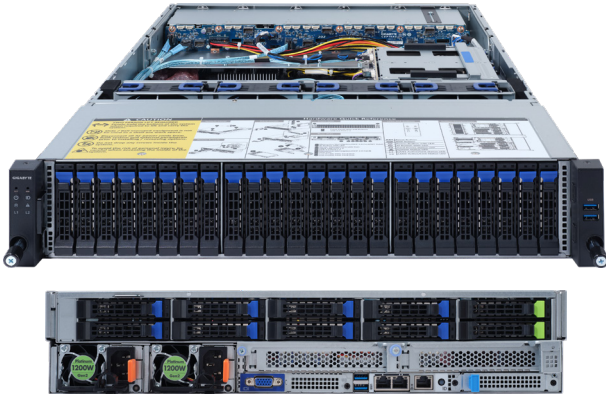


## R262-ZA0

Rack Server - 1U UP 42-Bay



### Features

- Hardware-level root of trust support
- Single AMD EPYC™ 7003 Series processors
- 8-Channel RDIMM/LRDIMM DDR4, 16 x DIMMs
- 2 x 1GbE LAN ports
- 1 x Dedicated management port
- 40 x 2.5" SATA/SAS hot-swappable SSD bays
- 2 x 2.5" Gen4 U.2 hot-swappable SSD bays
- Ultra-Fast M.2 with PCIe Gen4 x4 interface
- 2 x PCIe Gen4 x16 expansion slots
- 1 x OCP 3.0 Gen4 x16 mezzanine slot
- 1 x OCP 2.0 Gen3 x8 mezzanine slot
- 1+1 1200W (240V) 80 PLUS Platinum redundant power supply

### Specification

<b>Dimensions</b>	2U (W438 x H87.5 x D730 mm)	<b>Rear I/O</b>	2 x USB 3.0, 1 x VGA, 2 x RJ45, 1 x MLAN
<b>Motherboard</b>	MZA2-CE0 Rev. 3.0	<b>Backplane I/O</b>	Front side_CBP2008: 24 x SATA/SAS ports Rear side_CBP10A5: 8 x SATA/SAS, 2 x U.2 ports Internal_CBP2080: 8 x SATA/SAS ports Speed and bandwidth:SAS 12Gb/s, SATA 6Gb/s
<b>CPU</b>	AMD EPYC™ 7003 Series processors Single processor, 7nm technology, cTDP up to 240W Up to 64-core, 128 threads per processor Compatible with AMD EPYC™ 7002 Series processors	<b>TPM</b>	1 x TPM header with SPI interface Optional TPM2.0 kit: CTM010
<b>Chipset</b>	System on Chip	<b>Power Supply</b>	1+1 1200W (240V) 80 PLUS Platinum redundant power supply
<b>Memory</b>	8-Channel DDR4 memory, 16 x DIMM slots RDIMM/LRDIMM modules up to 128GB supported Memory speed: Up to 3200 / 2933 MHz	<b>System Management</b>	Aspeed® AST2500 management controller GIGABYTE Management Console (AMI MegaRAC SP-X)
<b>LAN</b>	2 x 1GbE LAN ports (1 x Intel® I350-AM2) 1 x 10/100/1000 management LAN	<b>OS Compatibility</b>	Windows Server 2016 / 2019 RHEL 8.3 (x64) or later SLES 12 SP5 (x64) / 15 SP2 (x64) or later Ubuntu 18.04.5 LTS (x64) / 20.04 LTS (x64) or later VMware ESXi 6.7 Update3 P03 / 7.0 Update1 or later Citrix Hypervisor 8.2.0 or later
<b>Video</b>	Integrated in Aspeed® AST2500 2D Video Graphic Adapter with PCIe bus interface 1920x1200@60Hz 32bpp	<b>Weight</b>	Net Weight: 21.08 kg / Gross Weight: 30 kg
<b>Storage</b>	Front: 24 x 2.5" SATA/ SAS hot-swap SSD bays Rear: 8 x 2.5" SATA/ SAS, 2 x 2.5" Gen4 U.2 hot-swap SSD bays Internal: 8 x 2.5" SATA/ SAS hot-swap SSD bays SAS card is required for SAS devices support Broadcom SAS35x48 expander Default configuration supports: 0 x SATA/ SAS, 2 x U.2 drives Suggested 12Gb/s SAS cards: CRA4648, CSA4648	<b>System Fans</b>	4 x 80x80x38mm (16,300rpm), 2-ball
<b>RAID</b>	Depends on SAS add-on card	<b>Operating Properties</b>	Operating temperature: 10°C to 35°C Operating humidity: 8-80% (non-condensing) Non-operating temperature: -40°C to 60°C Non-operating humidity: 20%-95% (non-condensing)
<b>Expansion Slots</b>	Riser Card CRS101E: 1 x PCIe x16 slot (Gen4 x16), FHHL Riser Card CRS101E: 1 x PCIe x16 slot (Gen4 x8 or x16), FHHL 1 x OCP 3.0 mezzanine slot with PCIe Gen4 x16 bandwidth 1 x OCP 2.0 mezzanine slot with PCIe Gen3 x0 or x8 bandwidth 1 x M.2 slot: M-key, PCIe Gen4 x4 per slot - Supports NGFF-2280/22110 cards	<b>Packaging Content</b>	1 x R262-ZA0 1 x CPU heatsink 1 x Rail kit
<b>Internal I/O</b>	1 x M.2 slot, 1 x USB 3.0 header, 1 x COM header, 1 x TPM header, 1 x OCP 3.0 mezzanine slot, 1 x OCP 2.0 mezzanine slot, 1 x Front panel header, 1 x HDD back plane board header, 1 x PMBus connector, 1 x IPMB connector, 1 x Clear CMOS jumper, 1 x BIOS recovery jumper	<b>Reference Numbers</b>	Barebone package: 6NR262ZA0MR-00 Rev. A00 - Motherboard: 9MZA2CE0NR-00 Rev. 3.0 - Rail kit: 25HB2-3A0202-K0R - CPU heatsink: 25ST1-15320E-J1R - Front panel board: 9CFP2001NR-00 - Back plane board ( Front): 9CBP2008NR-00 - Back plane board ( Rear): 9CBP10A5NR-00 - Back plane board ( Internal): 9CBP2080NR-00 - Power supply: 25EP0-212008-D0S - SAS Expander module: 9CEP26S0NR-00 - Riser card - CRS101E: 9CRS101ENR-00
<b>Front I/O</b>	2 x USB 3.0		

\* All specifications are subject to change without notice. Please visit our website for the latest information.

\* AMD, and the AMD Arrow logo, AMD EPYC and combinations thereof are trademarks of Advanced Micro Devices, Inc.

