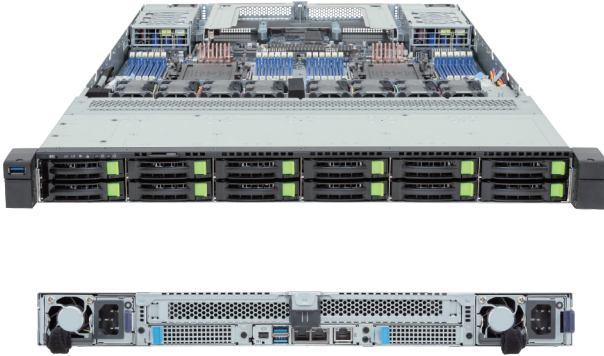


R184-A92-AAJ1

Rack Server - 1U DP 12-Bay NVMe/SATA



Key Features

- Dual Intel® Xeon® 6 Processors, LGA 7529
- 12-Channel DDR5 RDIMM / MCR DIMM, 24 x DIMMs
- Dual ROM Architecture
- 2 x 1Gb/s LAN ports via Intel® I350-AM2
- 12 x 2.5" Gen5 NVMe/SATA/SAS-4 hot-swap bays
- 3 x M.2 slots with PCIe Gen5 x4 and x2 interface
- 2 x FHHL PCIe Gen5 x16 slots
- 2 x OCP NIC 3.0 PCIe Gen5 x16 slots
- 2 x 2000W 80 PLUS Titanium redundant power supply

Application

Networking, Hybrid/Private Cloud Server...

Specification

Dimensions	1U (W438 x H43.5 x D815 mm)	I/O Ports	Front: 1 x USB 3.2 Gen1 Rear: 2 x USB 3.2 Gen1, 2 x RJ45, 1 x Mini-DP, 1 x MLAN
Motherboard	MA94-FS0	Backplane Board	PCIe Gen5 x4 or SATA 6Gb/s or SAS-4 24Gb/s
CPU	Intel® Xeon® 6 Processors - Intel® Xeon® 6900-Series Processors Dual processor, TDP up to 500W	Security Modules	1 x TPM header with SPI interface - Optional TPM2.0 kit: CTM012 1 x PRoT module connector (only enabled on RoT SKU)
Socket	2 x LGA 7529 (Socket BR)	Power Supply	2 x 2000W 80 PLUS Titanium redundant power supply AC Input: 100-240V
Chipset	System on Chip	System Management	ASPEED® AST2600 management controller GIGABYTE Management Console (AMI MegaRAC SP-X)
Memory	12-Channel DDR5 RDIMM / MCR DIMM*, 24 x DIMM slots RDIMM: Up to 6400 MT/s MCR DIMM: Up to 8000 MT/s *MCR DIMMs are only supported with Intel Xeon 6 CPU with P-cores.	System Fans	8 x 40x40x56mm (38,000rpm)
LAN	2 x 1Gb/s LAN (1 x Intel® I350-AM2) - Support NCSI function 1 x 10/100/1000 Mbps Management LAN	Operating Properties	Operating temperature: 10°C to 35°C Operating humidity: 8%-80% (non-condensing) Non-operating temperature: -40°C to 60°C Non-operating humidity: 20%-95% (non-condensing)
Video	Integrated in ASPEED® AST2600 - 1 x Mini-DP	Packaging Content	1 x R184-A92-AAJ1 2 x CPU heatsinks 1 x Mini-DP to D-Sub cable 2 x Carrier 1 x 2-Section Rail kit
Storage	Front hot-swap: 12 x 2.5" Gen5 NVMe/SATA/SAS-4 * *Storage card is required to support SATA and SAS drives Internal M.2: 2 x M.2 (2280/22110), PCIe Gen5 x4 1 x M.2 (2280), PCIe Gen5 x2	Part Numbers	Barebone package: 6NR184A92DR000AAJ1* Optional parts: - 3-Section Rail kit (Supports CMA): 25HB2-A56121-K0R - Cable Management Arm: 25HB1-R18300-K0R - RMA packaging: 6NR184A92SR-RMA-A100
RAID	Require RAID add-in cards Onboard VROC key header		
Expansion Slots	2 x FHHL PCIe Gen5 x16 slots 2 x OCP NIC 3.0 PCIe Gen5 x16 slots - Support NCSI function		



Learn more at <https://www.GIGABYTE.com/enterprise>

* All specifications are subject to change without notice. Please visit our website for the latest information.
* Intel, the Intel logo, Xeon, and other Intel marks are trademarks of Intel Corporation or its subsidiaries.
* All other brands, logos and names are property of their respective owners.

© 2024 Giga Computing Technology Co., Ltd. All rights reserved.

Designed by

