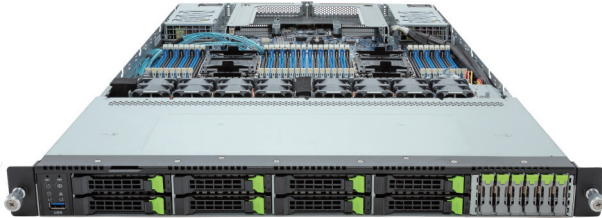


R183-S97-AAD1

Rack Server - 1U DP 14-Bay NVMe/SATA/SAS4

intel
XEON



Features

- Dual 5th/4th Gen Intel® Xeon® Scalable Processors
- Dual Intel® Xeon® CPU Max Series
- 8-Channel DDR5 RDIMM, 32 x DIMMs
- Dual ROM Architecture
- 2 x 1Gb/s LAN ports via Intel® I350-AM2
- 6 x E1.S NVMe hot-swappable bays
- 8 x 2.5" Gen5 NVMe/SATA/SAS-4 hot-swappable bays
- 2 x FHHL PCIe Gen5 x16 slots
- 2 x OCP 3.0 Gen5 x16 slots
- 1+1 1600W 80 PLUS Platinum redundant power supplies

Application

Networking, Hybrid/Private Cloud Server

Specification

| | | | |
|------------------------|---|-----------------------------|--|
| Dimensions | 1U (W438 x H43.5 x D815 mm) | Backplane Board | Speed and bandwidth: PCIe Gen5 x4 or SATA 6Gb/s or SAS-4 24Gb/s |
| Motherboard | MS93-FS0 | TPM | 1 x TPM header with SPI interface (Optional TPM2.0 kit: CTM010) |
| CPU | 5th Generation Intel® Xeon® Scalable Processors 4th Generation Intel® Xeon® Scalable Processors Intel® Xeon® CPU Max Series Dual processor, TDP up to 350W | Power Supply | 1+1 1600W 80 PLUS Platinum redundant power supplies AC Input: 100-240V |
| Socket | 2 x LGA 4677 (Socket E) | System Management | ASPEED® AST2600 management controller GIGABYTE Management Console (AMI MegaRAC SP-X) |
| Chipset | Intel® C741 Chipset | OS Compatibility | Windows Server 2019 / 2022 RHEL 8.6 / 8.7 / 8.8 / 8.9 / 8.10 / 9.0 / 9.1 / 9.2 / 9.3 / 9.4 SLES 15 SP4 / SP5 / SP6 Ubuntu 22.04 / 22.04.1 / 22.04.2 / 22.04.3 / 22.04.4 / 24.04 LTS VMware ESXi 7.0 Update 3o / 8.0 Update 1, Update 2, Update 3 Citrix Hypervisor 8.2 LTSR CU1 |
| Memory | 32 x DIMM slots, 8-Channel DDR5 memory RDIMM up to 96GB supported 3DS RDIMM up to 256GB supported Memory speed: Up to 5600 MT/s (1DPC), 4400 MT/s (2DPC) | System Fans | 8 x 40x40x56mm (32,000rpm) |
| LAN | 2 x 1Gb/s LAN ports (1 x Intel® I350-AM2) - Supported NCSI 1 x 10/100/1000 management LAN | Operating Properties | Operating temperature: 10°C to 35°C Operating humidity: 8-80% (non-condensing) Non-operating temperature: -40°C to 60°C Non-operating humidity: 20%-95% (non-condensing) |
| Video | ASPEED® AST2600 Integrated 2D Graphic Adapter | Packaging Content | 1 x R183-S97-AAD1, 2 x CPU heatsinks, 6 x Carrier clips, 1 x Mini-DP to D-Sub cable, 1 x 2-Section Rail kit Packaging Dimensions: 1045 x 595 x 249 mm |
| Storage | 6 x 9.5mm E1.S NVMe hot-swappable bays 8 x 2.5" Gen5 NVMe/SATA/SAS-4 hot-swappable bays SAS card is required for SAS devices support | Part Numbers | Barebone package (5th/4th Gen): 6NR183S97DR000ABD1* Barebone package (4th Gen): 6NR183S97DR000AAD1* - 2-Section Rail kit (CMA not supported): 25HB2-3A0206-K0R - CPU heatsink: 25ST1-4Z3200-S7R - Mini-DP to D-Sub cable: 25CRN-200801-K1R - Power supply: 25EP0-216008-L0S |
| RAID | Intel® SATA RAID 0/1/10/5 | | |
| Expansion Slots | 2 x FHHL PCIe Gen5 x16 slots 2 x OCP 3.0 Gen5 x16 slots - Supports NCSI function | | |
| I/O Ports | Front side: 1 x USB 3.2 Gen1 Rear side: 2 x USB 3.2 Gen1, 1 x Mini-DP, 2 x RJ45, 1 x MLAN Internal: 1 x TPM header, 1 x VROC connector | | |



Learn more about GIGABYTE server at <https://www.gigabyte.com/Enterprise>

Designed by



* All specifications are subject to change without notice. Please visit our website for the latest information.
* Intel, the Intel logo, Xeon, and other Intel marks are trademarks of Intel Corporation or its subsidiaries.
* All other brands, logos and names are property of their respective owners.

© 2024 Giga Computing Technology Co., Ltd. All rights reserved.