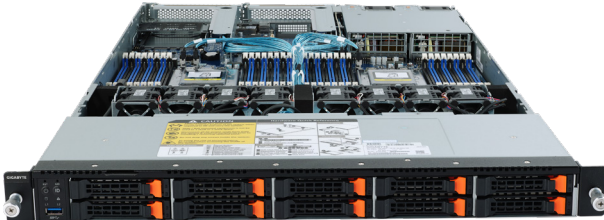
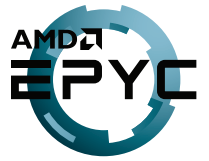


R182-Z92

Rack Server - 1U DP 10-Bay NVMe



Features

- Equipped GRAID SupremeRAID SR-1000 NVMe RAID card
- Dual AMD EPYC™ 7002 Series processors
- 8-Channel RDIMM/LRDIMM DDR4, 32 x DIMMs
- 2 x 1Gb/s LAN ports (Intel® I350-AM2)
- 1 x Dedicated management port
- 10 x 2.5" NVMe hot-swappable SSD bays
- Ultra-Fast M.2 with PCIe Gen4 x4 interface
- 2 x PCIe Gen4 x16 expansion slots
- 1 x OCP 3.0 Gen4 x16 mezzanine slot
- 1 x OCP 2.0 Gen3 x8 mezzanine slot
- 1+1 1200W (240V) 80 PLUS Platinum redundant power supply

Specification

Dimensions	1U (w438 x H43.5 x D730 mm)	Backplane I/O	Backplane P/N: 9CBP10A3NR-00 / bandwidth: PCIe Gen3 x4
Motherboard	MZ92-FS0	TPM	1 x TPM header with SPI interface; Optional TPM2.0 kit: CTM010
CPU	AMD EPYC™ 7002 Series processors Dual processors, 7nm technology, Socket SP3 Up to 64-core, 128 threads per processor TDP up to 225W, cTDP up to 240W, Fully support 280W Compatible with AMD EPYC™ 7001 Series processors	Power Supply	Dual 1200W 80 PLUS Platinum redundant power supply AC Input: 100-240V
Chipset	System on Chip	System Management	Aspeed® AST2500 management controller GIGABYTE Management Console (AMI MegaRAC SP-X)
Memory	8-Channel DDR4 memory, 32 x DIMM slots RDIMM/LRDIMM modules up to 128GB supported 3DS RDIMM/LRDIMM modules up to 256GB supported Memory speed: Up to 3200 / 2933 MHz	OS Compatibility	Windows Server 2016 / 2019 RHEL 7.6 / 8.0 or later SLES 12 SP4 / 15 SP1 or later Ubuntu 16.04.6 LTS / 8.04.3 LTS / 20.04 LTS or later VMware ESXi 6.5 EP15 / 6.7 Update3 / 7.0 or later Citrix Hypervisor 8.1.0 or later
LAN	2 x 1GbE LAN ports (1 x Intel® I350-AM2) 1 x 10/100/1000 management LAN	System Fans	8 x 40x40x56mm (23,000rpm)
Video	Integrated in Aspeed® AST2500 2D Video Graphic Adapter with PCIe bus interface 1920x1200@60Hz 32bpp	Operating Properties	Operating temperature: 10°C to 35°C Operating humidity: 8-80% (non-condensing) Non-operating temperature: -40°C to 60°C Non-operating humidity: 20%-95% (non-condensing)
Storage	10 x 2.5" NVMe hot-swappable SSD bays 1 x M.2 slot: M-key, PCIe Gen3 x4 - Supports NGFF-2242/2260/2280/22110 cards	Packaging Content	1 x R182-Z92, 2 x CPU heatsinks, 1 x Rail kit
Expansion Slots	2 x PCIe x16 slot (Gen4 x16), FHHL 1 x OCP 3.0 mezzanine slot (Gen4 x16) - Supported NCSI function 1 x OCP 2.0 mezzanine slot (Gen3 x8) - Supported NCSI function	Reference Numbers	Barebone package: 6NR182Z92MR-00 - Motherboard: 9MZ92FS0NR-00 - Rail kit: 25HB2-3A0202-K0R - CPU heatsink: 25ST1-44320G-A0R - Power supply: 25EP0-212007-F3S - GRAID SupremeRAID Core Software Module License (optional): 25FC1-SRBUN1-AFS (4-native NVMe RAID) 25FC1-SRBUN2-AFS (8-native NVMe RAID) 25FC1-SRBUN3-AFS (12-native NVMe RAID)
Front I/O	1 x USB 3.0		
Rear I/O	2 x USB 3.0, 1 x VGA, 2 x RJ45, 1 x MLAN		



Learn more about GIGABYTE server solutions, visit www.gigabyte.com/Enterprise

* All specifications are subject to change without notice. Please visit our website for the latest information.

* AMD, and the AMD Arrow logo, AMD EPYC and combinations thereof are trademarks of Advanced Micro Devices, Inc.

* All other brands, logos and names are property of their respective owners.

© 2021 GIGABYTE Technology Co., Ltd. All rights reserved.