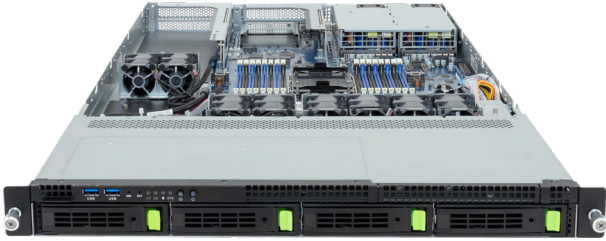


R164-SG0-AAH1

Rack Server - 1U UP 1 x PCIe Gen5 GPU



Key Features

- Supports 1 x Dual slot Gen5 GPU
- Single Intel® Xeon® 6 Processors, LGA 4710
- 8-Channel DDR5 RDIMM / MCR DIMM, 16 x DIMMs
- Dual ROM Architecture
- 4 x 3.5"/2.5" Gen5 NVMe/SATA/SAS-4 hot-swappable bays
- 1 x M.2 slot with PCIe Gen5 x2 interface
- 1 x M.2 slot with PCIe Gen5 x2 interface, shared with SATA support
- 1 x FHFL PCIe Gen5 x16 slot for GPUs
- 1 x FHFL PCIe Gen5 x16 slot
- 1 x FHHL PCIe Gen5 x16 slot
- 1 x OCP 3.0 Gen5 x16 slot
- Dual 1300W 80 PLUS Titanium redundant power supply

Application

AI, AI Inference, Visual Computing, Networking, Hybrid/Private Cloud...

Specification

Dimensions	1U (W438 x H43.5 x D815 mm)	I/O Ports	Front: 2 x USB 3.2 Gen1 Rear: 2 x USB 3.2 Gen1, 1 x Mini-DP, 1 x MLAN
Motherboard	MSG4-GU0	Backplane Board	PCIe Gen5 x4 or SATA 6Gb/s or SAS-4 24Gb/s
CPU	Intel® Xeon® 6 Processors - Intel® Xeon® 6700E-Series Processors - Intel® Xeon® 6700P-Series Processors - Intel® Xeon® 6500P-Series Processors Single processor, TDP up to 350W	Security Modules	1 x TPM header with SPI interface - Optional TPM2.0 kit: CTM012 1 x PRoT module connector (M.2 M-key) - Optional PRoT module (AST1060 solution): CSC1200
Sock	1 x LGA 4710 (Socket E2)	Power Supply	Dual 1300W 80 PLUS Titanium redundant power supply AC Input: 100-240V
Chipset	System on Chip	System Management	ASPEED® AST2600 management controller GIGABYTE Management Console (AMI MegaRAC SP-X)
Memory	8-Channel DDR5 RDIMM / MCR DIMM, 16 x DIMM slots RDIMM: Up to 6400 MT/s (1DPC), 5200 MT/s (2DPC) MCR DIMM: Up to 8000 MT/s (*MCR DIMMs are only supported with Intel Xeon 6 Processors with P-cores and in a 1DPC configuration.)	System Fans	8 x 40x40x56mm (32,000rpm)
LAN	1 x 10/100/1000 Mbps Management LAN	Operating Properties	Operating temperature: 10°C to 35°C Operating humidity: 8%-80% (non-condensing) Non-operating temperature: -40°C to 60°C Non-operating humidity: 20%-95% (non-condensing)
Video	ASPEED® AST2600 Integrated 2D Graphic Adapter	Packaging Content	1 x R164-SG0-AAH1 1 x CPU heatsink 1 x Mini-DP to D-Sub cable 1 x GPU power cable (12VHPWR, 550mm) 2 x Carriers 1 x 2-Section Rail kit
Storage	4 x 3.5"/2.5" Gen5 NVMe/SATA/SAS-4* hot-swappable bays *SAS card is required to support SAS drives.	Part Numbers	Barebone package: 6NR164SG0DR000AAH1* - 2-Section Rail kit (CMA not supported): 25HB2-3A0206-K0R - CPU heatsink: 25ST1-4Z3200-S7R - GPU power cable (12VHPWR, 550mm): 25CRI-550107-Y4R - Power supply: 25EP0-21300C-G1S
RAID	Require RAID add-in cards		
Expansion Slots	1 x FHFL PCIe Gen5 x16 slot for GPUs 1 x FHFL PCIe Gen5 x16 slot (blocked when Dual-slot GPU is installed) 1 x FHHL PCIe Gen5 x16 slot 1 x OCP 3.0 Gen5 x16 slot (supports NCSI function) 2 x M.2 slots (M-key, PCIe Gen5 x2, support 2280/22110 cards) - 1 x M.2 slot is shared with SATA support		



Learn more about GIGABYTE server at <https://www.gigabyte.com/Enterprise>

- * All specifications are subject to change without notice. Please visit our website for the latest information.
- * Intel, the Intel logo, Xeon, and other Intel marks are trademarks of Intel Corporation or its subsidiaries.
- * All other brands, logos and names are property of their respective owners.

© 2024 Giga Computing Technology Co., Ltd. All rights reserved.

Designed by

