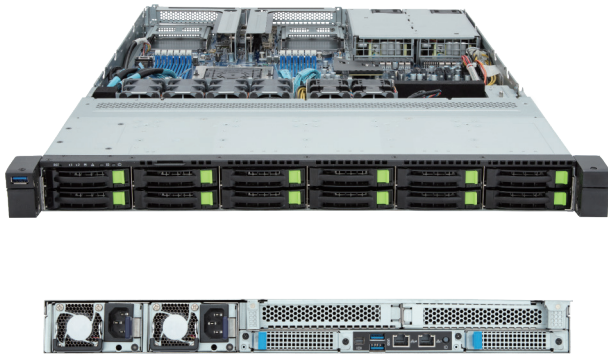


R163-Z32-AAH1

Rack Server - 1U UP 12-Bay NVMe/SATA



Key Features

- Single AMD EPYC™ 9004 Series Processors
- 12-Channel DDR5 RDIMM, 12 x DIMMs
- Dual ROM Architecture
- 1 x 1Gb/s LAN port via Intel® I210-AT
- 12 x 2.5" Gen4 NVMe/SATA/SAS hot-swap bays
- 1 x M.2 slot with PCIe Gen3 x4 interface
- 2 x FHHL PCIe Gen5 x16 slots
- 2 x OCP NIC 3.0 PCIe Gen5 x16 slots
- 1+1 1300W 80 PLUS Titanium redundant power supplies

Application

Networking, Hybrid/Private Cloud Server

Specification

Dimensions	1U (W438 x H43.5 x D710 mm)	I/O Ports	Front: 1 x USB 3.2 Gen1 Rear: 2 x USB 3.2 Gen1, 1 x Mini-DP, 1 x RJ45, 1 x MLAN
Motherboard	MZ33-DC0	Backplane Board	Speed and bandwidth: PCIe Gen4 x4 or SATA 6Gb/s or SAS 12Gb/s
CPU	AMD EPYC™ 9005 Series Processors AMD EPYC™ 9004 Series Processors Single processor, cTDP up to 300W - At 25°C ambient, cTDP up to 400W	Security Modules	1 x TPM header with SPI interface (Optional TPM2.0 kit: CTM010)
Socket	1 x LGA 6096 (Socket SP5)	Power Supply	1+1 1300W 80 PLUS Titanium redundant power supplies AC Input: 100-240V
Chipset	System on Chip	System Management	ASPEED® AST2600 Baseboard Management Controller GIGABYTE Management Console web interface
Memory	12 x DIMM slots 12-Channel DDR5 RDIMM RDIMM: Up to 4800 MT/s	OS Support	Windows Server, Red Hat Enterprise Linux server, Ubuntu, SUSE Linux Enterprise server, VMware ESXi, Citrix Hypervisor
LAN	1 x 1Gb/s LAN (1 x Intel® I210-AT) - Supports NCSI 1 x 10/100/1000 Mbps Management LAN	System Fans	2 x 40x40x28mm (25,000rpm), 4 x 40x40x56mm (29,700rpm)
Video	Integrated in ASPEED® AST2600 - 1 x VGA port	Operating Properties	Operating temperature: 10°C to 35°C Operating humidity: 8%-80% (non-condensing) Non-operating temperature: -40°C to 60°C Non-operating humidity: 20%-95% (non-condensing)
Storage	Front hot-swap: 12 x 2.5" Gen4 NVMe/SATA/SAS *SAS card is required to support SAS drives. Internal M.2: 1 x M.2 (2280/22110), PCIe Gen3 x4	Packaging Content	1 x R163-Z32-AAH1, 1 x CPU heatsink, 1 x 2-Section Rail kit 1 x Mini-DP to D-Sub cable Packaging Dimensions: 977 x 588 x 236 mm
RAID	Require RAID add-in cards	Part Numbers	Barebone package (EPYC 9005/9004): 6NR163Z32DR000ABH1* Barebone package (EPYC 9004): 6NR163Z32DR000AAH1* Optional parts: - 3-Section Rail kit (Supports CMA): 25HB2-A56120-K0R - Cable Management Arm: 25HBZ-R18100-K0R
Expansion Slots	2 x FHHL PCIe Gen5 x16 slots 2 x OCP NIC 3.0 PCIe Gen5 x16 slots - Supports NCSI		



Learn more at <https://www.GIGABYTE.com/enterprise>

- * All specifications are subject to change without notice. Please visit our website for the latest information.
- * AMD, the AMD Arrow logo, EPYC and combinations thereof are trademarks of Advanced Micro Devices, Inc.
- * All other brands, logos and names are property of their respective owners.

© 2024 Giga Computing Technology Co., Ltd. All rights reserved.

Designed by

