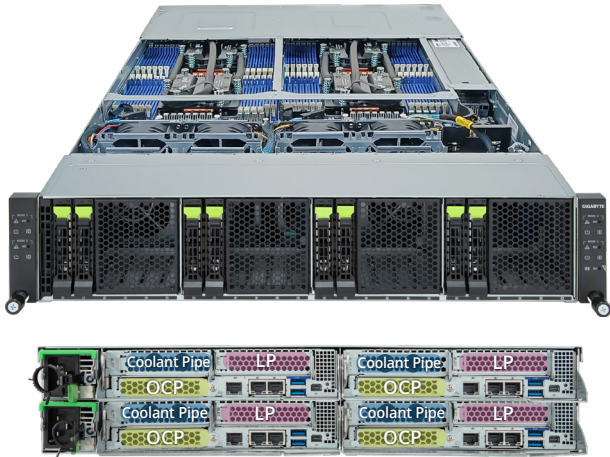


H273-Z81-LAW1

DP 2U 4-Node Server 8 x Gen4 NVMe/SATA



Features

- Liquid cooling solution
- 2U 4-node rear access server system
- AMD EPYC™ 9004 series processor family
- Dual processors per node, 5nm technology
- 12-Channel RDIMM DDR5 per processor, 96 x DIMMs
- Dual ROM Architecture supported
- 8 x 1Gb/s LAN ports (Intel® I350-AM2)
- 4 x dedicated management ports
- 8 x 2.5" Gen4 NVMe/ SATA hot-swappable bays
- 4 x M.2 with PCIe Gen4 x4 interface (optional)
- 4 x Low profile PCIe Gen5 x16 expansion slots
- 4 x OCP 3.0 Gen5 x16 mezzanine slots
- Dual 3000W (240V) 80 PLUS Titanium redundant power supply

Specification

Dimensions	2U 4 Nodes - Rear access (W440 x H87.5 x D877 mm)	Rear I/O	8 x USB 3.2 Gen1, 4 x Mini-DP, 8 x RJ45, 4 x RJ45 MLAN
Motherboard	MZ83-HD0	Backplane I/O	PCIe Gen4 x4 or SATA 6Gb/s or SAS 12Gb/s
CPU	AMD EPYC™ 9004 Series processors Dual processors, 5nm technology Up to 96-core, 192 threads per processor cTDP up to 400W 8 x LGA 6096 Socket SP5	TPM	1 x TPM header with SPI (Optional TPM2.0 kit: CTM010)
Chipset	System on Chip	Power Supply	Dual 3000W 80 PLUS Titanium power supply AC Input: 100-240V
Memory	Total 96 x DIMM slots (24 x DIMM slots per node) 12-Channel DDR5 memory, up to 4800 MHz RDIMM modules up to 128GB supported 3DS RDIMM modules up to 256GB supported	System Management	Aspeed® AST2600 management controller GIGABYTE Management Console (AMI MegaRAC SP-X)
LAN	8 x 1GbE LAN ports (Intel® I350-AM2) Supported NCSI function 4 x dedicated management ports	OS Compatibility	Windows Server 2019 / 2022 RHEL 8.6 / 9 (x64) or later SLES 15 SP4 (x64) or later Ubuntu 20.04.5 LTS / 22.04 LTS (x64) or later VMware ESXi 7 P05 / 8 or later Citrix Hypervisor 8.2.1 or later
Video	Integrated in Aspeed AST2600 2D Video Graphic Adapter with PCIe bus interface 1920x1200@60Hz 32bpp, DDR4 SDRAM Management chip on CMC board: Integrated in Aspeed AST2520A2-GP	System Fans	4 x 80x80x38mm (18,300rpm)
Storage	8 x 2.5" Gen4 NVMe/ SATA/ SAS hot-swappable SSD bays SAS card is required for SAS devices support	Operating Properties	Operating temperature: 10°C to 35°C Operating humidity: 8-80% (non-condensing) Non-operating temperature: -40°C to 60°C Non-operating humidity: 20%-95% (non-condensing)
Expansion Slots	4 x PCIe Gen5 x16 low-profile slots 4 x OCP 3.0 mezzanine slot (Gen5 x16) *4 x M.2 slots (M-key, PCIe Gen4 x4, NGFF-2280/22110) *Optional kit for M.2 extension riser card	Packaging Content	1 x H273-Z81, 1 x Liquid cooling solution kit, 1 x Rail Kit
		Reference Numbers	Barebone package: 6NH273Z81DR000LAW1* - Motherboard: 9MZ83HD0UR-000 - Rail kit: 25HB2-A66125-K0R - Liquid cooling kit: 25ST7-20000C-C4R (CPU) - Leak sensor board: 6NH273Z80S1000LAN11 (optional, QPA:4) - M.2 extension riser card: 9CMTP192NR-00 (optional) - Power Supply: 25EP0-230009-L0S



Learn more about GIGABYTE server, visit <https://www.gigacomputing.com>

* All specifications are subject to change without notice. Please visit our website for the latest information.
* AMD, the AMD Arrow logo, EPYC and combinations thereof are trademarks of Advanced Micro Devices, Inc.
* All other brands, logos and names are property of their respective owners.

© 2023 Giga Computing Technology Co., Ltd. All rights reserved.

Engineered by

