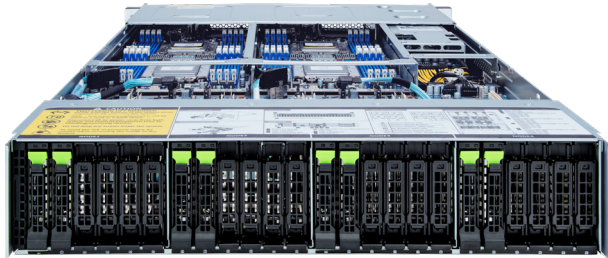
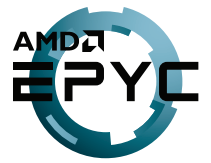


# H262-Z6B-ICP1

## AMD DP 2U 4 Nodes Immersion Server

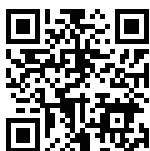


### Features

- Single-Phase Immersion Ready Server
- Hardware-level root of trust support
- 2U - 4 nodes rear access server system
- Dual AMD EPYC™ 7003 Series processors
- 8-Channel RDIMM/LRDIMM DDR4, 64 x DIMMs
- 8 x 1Gb/s LAN ports (Intel® I350-AM2)
- 4 x MLAN and 1 x CMC management ports
- 8 x 2.5" Gen4 U.2 hot-swappable SSD bays
- 4 x M.2 with PCIe Gen4 x4 interface
- 8 x PCIe Gen4 x16 low-profile expansion slots
- 4 x OCP 3.0 Gen4 x16 mezzanine slots
- 3000W (240V) 80 PLUS Titanium redundant PSU

### Specification

<b>Dimensions</b>	2U 4 Nodes - Rear access (W440 x H87.5 x D840 mm)	<b>Backplane I/O</b>	8 x ports Speed and bandwidth: SATA 6Gb/s or SAS 12Gb/s or PCIe Gen4 x4
<b>Motherboard</b>	MZ62-HD4 Rev. 3.0	<b>TPM</b>	1 x TPM header with SPI (Optional TPM2.0 kit: CTM010)
<b>CPU</b>	AMD EPYC™ 7003 Series processors Dual processors, 7nm technology TDP up to 225W, cTDP up to 240W; Conditional support 280W Compatible with AMD EPYC™ 7002 Series processors 8 x LGA 4094 Socket SP3	<b>Power Supply</b>	Dual 3000W 80 PLUS Titanium power supply AC Input: 100-240V
<b>Chipset</b>	System on Chip	<b>System Management</b>	Aspeed® AST2500 management controller GIGABYTE Management Console (AMI MegaRAC SP-X)
<b>Memory</b>	Total 64 x DIMM slots (16 x DIMM slots per node) 8-Channel DDR4 memory, up to 3200 MHz RDIMM/LRDIMM modules up to 128GB supported 3DS RDIMM/LRDIMM modules up to 256GB supported	<b>OS Compatibility</b>	Windows Server 2016 / 2019 / 2022 RHEL 8.3 / 9 (x64) or later SLES 12 SP5 / 15 SP2 (x64) or later Ubuntu 18.04.5 LTS / 20.04 LTS / 22.04 LTS (x64) or later VMware ESXi 6.7 Update3 P03 / 7.0 Update1 or later Citrix Hypervisor 8.2.0 or later
<b>LAN</b>	8 x 1GbE LAN ports (1 x Intel® I350-AM2) 4 x Dedicated management ports 1 x 10/100/1000 CMC global management port	<b>Operating Properties</b>	Non-operating temperature: -40°C to 60°C Non-operating humidity: 20%-95% (non-condensing)
<b>Video</b>	Integrated in Aspeed® AST2500 2D Video Graphic Adapter with PCIe bus interface 1920x1200@60Hz 32bpp, DDR4 SDRAM	<b>Packaging Content</b>	1 x H262-Z6B 8 x CPU heatsinks
<b>Storage</b>	8 x 2.5" Gen4 U.2 hot-swappable SSD bays All storage bays are compatible with SATA devices	<b>Reference Numbers</b>	Barebone: 6NH262Z6BRR000ICP1* - Motherboard: 9MZ62HD4NR-00 - CPU heatsink: 25ST1-44320H-A0R/25ST1-44320I-A0R - M.2 extension card: 9CMTPO61NR-00 (in option) - Back plane board: 9CBPH080NR-00 - Power Supply: 25EPO-23000E-G1S - C19 power cord 125V/15A (US): 25CP1-018000-Q0R (in option) - C19 power cord 250V/16A (EU): 25CP3-01830H-Q0R (in option) - Ring topology kit: 6NH262Z65SR-00-100 (in option)
<b>Expansion Slots</b>	8 x PCIe Gen4 x16 low-profile slots 4 x OCP 3.0 mezzanine slot (Gen4 x16) 4 x M.2 slots (M-key, PCIe Gen4 x4, supports NGFF-2280/22110)		
<b>Rear I/O</b>	8 x USB 3.2 Gen1, 4 x Mini-DP, 8 x RJ45, 4 x MLAN, 1 x CMC		



Learn more about GIGABYTE server solutions, visit [www.gigabyte.com/Enterprise](http://www.gigabyte.com/Enterprise)

\* All specifications are subject to change without notice. Please visit our website for the latest information.

\* AMD, and the AMD Arrow logo, AMD EPYC and combinations thereof are trademarks of Advanced Micro Devices, Inc.

\* All other brands, logos and names are property of their respective owners.

© 2022 GIGABYTE Technology Co., Ltd. All rights reserved.