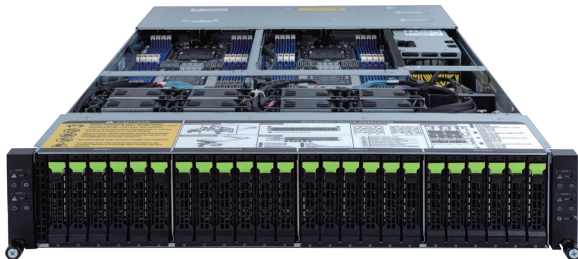


H262-Z6A

High Density Server - DP 2U 4 Nodes Gen4 NVMe



Features

- Hardware-level root of trust support
- 2U - 4 nodes rear access server system
- Dual AMD EPYC™ 7002 series processor family
- 8-Channel RDIMM/LRDIMM DDR4 per processor, 64 x DIMMs
- 8 x 1Gb/s LAN ports (Intel® I350-AM2)
- 4 x Dedicated management ports
- 1 x CMC global management port
- 24 x 2.5" Gen4 U.2 hot-swappable SSD bays
- 4 x M.2 with PCIe Gen4 x4 interface
- 8 x Low profile PCIe Gen4 x16 expansion slots
- 4 x OCP 3.0 Gen4 x16 mezzanine slots
- 2200W 80 PLUS Platinum redundant PSU

Specification

Dimensions (WxHxD)	2U 4 Nodes - Rear access 440 x 87.5 x 840 mm	Rear I/O	Per node: 2 x USB 3.0, 1 x Mini-DP, 2 x RJ45, 1 x MLAN Total: 8 x USB 3.0, 4 x Mini-DP, 8 x RJ45, 4 x MLAN, 1 x CMC
Motherboard	MZ62-HD4	Backplane I/O	24 x ports Speed and bandwidth: SATA 6Gb/s or SAS 12Gb/s or PCIe Gen4 x4
CPU	AMD EPYC™ 7002 series processor family Dual processor, 7nm technology TDP up to 200W Compatible with AMD EPYC™ 7001 series processor family 8 x LGA 4094 Socket SP3	TPM	1 x TPM header with SPI interface Optional TPM2.0 kit: CTM010
Chipset	System on Chip	Power Supply	Dual 2200W 80 PLUS Platinum redundant power supply
Memory	Total 64 x DIMM slots (16 x DIMM slots per node) DDR4 memory supported only 8-Channel memory architecture RDIMM modules up to 128GB supported LRDIMM modules up to 128GB supported Memory speed: Up to 3200 / 2933 MHz	System Management	Aspeed® AST2500 management controller GIGABYTE Management Console (AMI MegaRAC SP-X)
LAN	8 x 1GbE LAN ports (1 x Intel® I350-AM2) 4 x Dedicated management ports 1 x 10/100/1000 CMC global management port	OS Compatibility	Windows Server 2016 / 2019 RHEL 7.6 (x64) / 8.0 (x64) or later SLES 12 SP4 (x64) / 15 SP1 (x64) or later Ubuntu 16.04.6 LTS (x64) / 18.04.3 LTS (x64) / 20.04 LTS (x64) VMware ESXi 6.5 EP15 / 6.7 Update3 or later Citrix Hypervisor 8.1.0 or later
Video	Integrated in Aspeed® AST2500 2D Video Graphic Adapter with PCIe bus interface 1920x1200@60Hz 32bpp, DDR4 SDRAM	Weight	Net Weight: 28 kg / Gross Weight: 50 kg
Storage	24 x 2.5" Gen4 U.2 hot-swappable SSD bays All storage bays are compatible with SATA devices 4 x M.2 slot: - M-key, PCIe Gen4 x4 - Supports NGFF-2280/22110 cards	System Fans	8 x 80x80x38mm (16,300rpm)
Expansion Slots	8 x Low profile half-length slots with PCIe x16 (Gen4 x16) 4 x OCP 3.0 mezzanine slot (Gen4 x16)	Operating Properties	Operating temperature: 10°C to 35°C Operating humidity: 8-80% (non-condensing) Non-operating temperature: -40°C to 60°C Non-operating humidity: 20%-95% (non-condensing)
Internal I/O	Per node: 1 x M.2 slot, 1 x COM header, 1 x TPM header, 1 x BMC SGPIO header, 1 x JTAG BMC header, 1 x PLD header, 1 x Clear CMOS jumper, 1 x IPMB connector	Packaging Content	1 x H262-Z6A, 8 x CPU heatsinks, 1 x Rail kit
Front I/O	-	Reference Numbers	Barebone package: 6NH262Z6AMR-00 Spare parts: - Motherboard: 9MZ62HD4NR-00 - Rail kit: 25HB2-AN6103-K0R - CPU heatsink: 25ST1-44320H-A0R/25ST1-44320I-A0R - Back plane board: 9CBPH700NR-00 - Power Supply: 25EP0-222003-D0S - C19 type power cord 125V/15A (US): 25CP1-018000-Q0R (optional extra) - C19 type power cord 250V/16A (EU): 25CP3-01830H-Q0R (optional extra) - C19 type power cord 250V/15A (US): 25CP1-018300-Q0R (optional extra) - Ring topology kit: 6NH262Z65SR-00-100 (optional extra)

* All specifications are subject to change without notice. Please visit our website for the latest information.

* AMD, and the AMD Arrow logo, AMD EPYC, AMD Radeon Instinct and combinations thereof are trademarks of Advanced Micro Devices, Inc.

