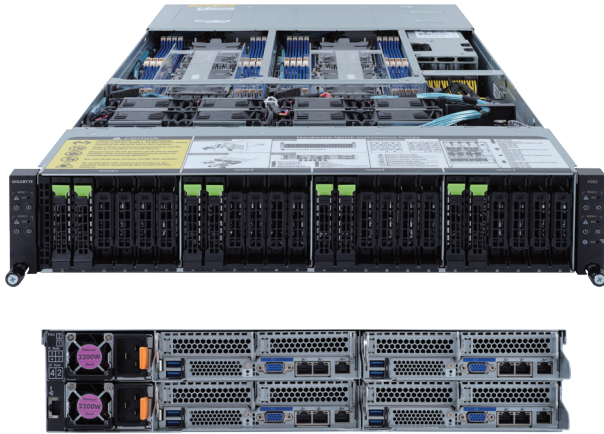


# H262-PC1

## High Density Server - DP 2U 4-Node



### Features

- 2U - 4 nodes with rear access to the node trays
- 3rd Gen. Intel® Xeon® Scalable Processors
- 8-Channel RDIMM/LRDIMM DDR4, 64 x DIMMs
- Intel® C621A Express Chipset
- Dual ROM technology supported
- Supports Intel® Optane™ Persistent Memory 200 series
- 8 x 10Gb/s BASE-T LAN ports (Intel® X710-AT2)
- 4 x dedicated management ports
- 1 x CMC global management port
- 8 x 2.5" SATA/SAS/NVMe hot-swappable HDD/SSD bays
- 8 x Low profile PCIe Gen4 x16 expansion slots
- 4 x OCP 2.0 Gen3 x16 mezzanine slots
- 2200W 80 PLUS Platinum redundant PSU

### Specification

<b>Dimensions</b>	2U 4 Nodes - Rear access (W440 x H87.5 x D840 mm)	<b>Front I/O</b>	-
<b>Motherboard</b>	MH62-HD1	<b>Rear I/O</b>	Total: 8 x USB 3.0, 4 x VGA, 8 x RJ45, 4 x MLAN, 1 x CMC LAN
<b>CPU</b>	3rd Gen Intel® Xeon® Scalable Processors Intel® Xeon® Platinum Processor, Intel® Xeon® Gold Processor, Intel® Xeon® Silver Processor 10nm technology, CPU TDP up to 270W Total: 8 x LGA 4189 sockets (Socket P+)	<b>Backplane I/O</b>	8 x ports (PCIe Gen4 x4 U.2 per port)
<b>Chipset</b>	Intel® C621A Express Chipset	<b>TPM</b>	1 x TPM header with SPI interface Optional TPM2.0 kit: CTM010
<b>Memory</b>	8-Channel DDR4 memory, total 64 x DIMM slots RDIMM/LRDIMM modules up to 128GB supported 3DS RDIMM/LRDIMM modules up to 256GB supported 1.2V modules: 3200/2933/2666 MHz	<b>Power Supply</b>	Dual 2200W 80 PLUS Platinum redundant PSU AC Input: 100-240V
<b>LAN</b>	8 x 10GbE BASE-T LAN ports (Intel® X710-AT2) 4 x Dedicated management ports 1 x 10/100/1000 CMC global management port	<b>System Management</b>	Aspeed® AST2600 management controller GIGABYTE Management Console (AMI MegaRAC SP-X)
<b>Video</b>	Integrated in Aspeed® AST2600 2D Video Graphic Adapter with PCIe bus interface 1920x1200@60Hz 32bpp, DDR4 SDRAM	<b>OS Compatibility</b>	Windows Server 2016 / 2019 RHEL 7.9 (x64) / 8.2 (x64) / 8.3 (x64) SLES 12 SP5 (x64) / 15 SP2 (x64) or later Ubuntu 20.04 LTS (x64) / 20.04.1 LTS (x64) or later VMware ESXi 6.7 Update3 P03 / 7.0 Update2 Citrix Hypervisor 8.2.0
<b>Storage</b>	8 x 2.5" SATA/SAS/NVMe hot-swappable HDD/SSD bays 4 x SATA DOM	<b>System Fans</b>	8 x 80x80x38mm (16,300rpm)
<b>RAID</b>	Intel® SATA RAID 0/1	<b>Operating Properties</b>	Operating temperature: 10°C to 35°C Operating humidity: 8-80% (non-condensing) Non-operating temperature: -40°C to 60°C Non-operating humidity: 20%-95% (non-condensing)
<b>Expansion Slots</b>	Total: 8 x low-profile PCIe x16 slots (Gen4 x16) 4 x OCP 2.0 mezzanine slots (Gen3 x16)	<b>Packaging Content</b>	1 x H262-PC1 8 x CPU heatsinks 1 x Rail kit
<b>Internal I/O</b>	Per node: 1 x COM header, 1 x TPM header, 1 x SATA 7-pin connectors, 1 x IPMB connector, 1 x BMC SGPIO header, 1 x PLD header, 1 x JTAG BMC header, 1 x Clear CMOS jumper, 1 x Buzzer	<b>Reference Numbers</b>	Barebone package: 6NH262PC1MR-00 - Motherboard: 9MH62HD1NR-00 - VROC module: 25FD0-R181N0-10R (option) - Rail kit: 25HB2-AN6103-K0R - CPU heatsink: 25ST1-453212-M1R/ 25ST1-453213-M1R - Power Supply: 25EP0-222003-D0S



Learn more about GIGABYTE server solutions, visit [www.gigabyte.com/Enterprise](http://www.gigabyte.com/Enterprise)

- \* All specifications are subject to change without notice. Please visit our website for the latest information.
- \* Intel, the Intel logo, Xeon, and other Intel marks are trademarks of Intel Corporation or its subsidiaries.
- \* All other brands, logos and names are property of their respective owners.

© 2021 GIGABYTE Technology Co., Ltd. All rights reserved.