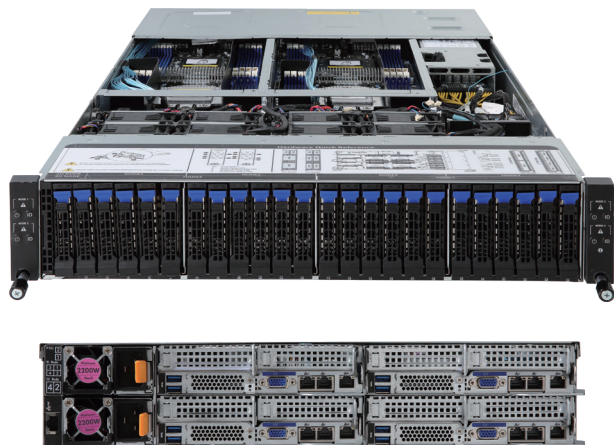
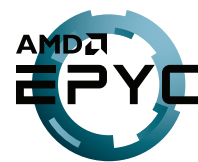


H261-Z60

High Density Server - DP 2U 4 Nodes Server



Features

- 2U - 4 nodes rear access server system
- Dual AMD EPYC™ 7003 Series processors
- 8-Channel RDIMM/LRDIMM DDR4 per processor, 64 x DIMMs
- 8 x 1Gb/s LAN ports (Intel® I350-AM2)
- 4 x Dedicated management ports
- 1 x CMC global management port
- 24 x 2.5" SATA/SAS hot-swappable HDD/SSD bays
- 8 x M.2 with PCIe Gen3 x4 interface
- 8 x Low profile PCIe Gen3 x16 expansion slots
- 4 x OCP 2.0 Gen3 x16 mezzanine slots
- Aspeed® AST2500 remote management controller
- 2+0 2200W (240V) 80 PLUS Platinum power supply

Specification

Dimensions	2U 4 Nodes - Rear access (W440 x H87 x D820 mm)	Backplane I/O	24 x ports Speed and bandwidth: SATA 6Gb/s or SAS 12Gb/s per port
Motherboard	MZ61-HD0 Rev. 3.0	TPM	1 x TPM header with LPC interface Optional TPM2.0 kit: CTM000
CPU	AMD EPYC™ 7003 Series processors Dual processors, 7nm technology Up to 64-core, 128 threads per processor Total 8 x Socket SP3, TDP up to 200W Compatible with AMD EPYC™ 7002 Series processors	Power Supply	2 x 2200W 80 PLUS Platinum power supply AC Input: 100-240V
Chipset	System on Chip	System Management	Aspeed® AST2500 management controller GIGABYTE Management Console (AMI MegaRAC SP-X)
Memory	8-Channel DDR4 memory, total 64 x DIMM slots RDIMM/LRDIMM modules up to 128GB supported 3DS RDIMM/LRDIMM modules up to 256GB supported Memory speed: Up to 3200 MHz	OS Compatibility	Windows Server 2016 / 2019 RHEL 8.3 (x64) or later SLES 12 SP5 (x64) / 15 SP2 (x64) or later Ubuntu 18.04.5 LTS (x64) / 20.04 LTS (x64) or later VMware ESXi 6.7 Update3 P03 / 7.0 Update1 or later Citrix Hypervisor 8.2.0 or later
LAN	8 x 1GbE LAN ports (1 x Intel® I350-AM2) 4 x Dedicated management ports 1 x 10/100/1000 CMC global management port	System Fans	8 x 80x80x38mm (16,300rpm)
Video	Integrated in Aspeed® AST2500 2D Video Graphic Adapter with PCIe bus interface 1920x1200@60Hz 32bpp, DDR4 SDRAM	Operating Properties	Operating temperature: 10°C to 35°C Operating humidity: 8-80% (non-condensing) Non-operating temperature: -40°C to 60°C Non-operating humidity: 20%-95% (non-condensing)
Storage	24 x 2.5" SATA/SAS hot-swappable HDD/SSD bays SAS card is required for SAS devices support	Package Contents	1 x H261-Z60, 8 x CPU heatsinks, 1 x Rail kit
Expansion Slots	8 x PCIe x16 (Gen3 x16) slots, Low-profile half-length 4 x OCP 2.0 mezzanine slots (Gen3 x16) 8 x M.2 slots (Gen3 x4)	Reference Numbers	Barebone package: 6NH261Z60MR-00 Rev. B00 - Motherboard: 9MZ61HD0NR-00 Rev. 3.0 - Rail kit: 25HB2-NJ2102-N1R/ 25HB2-AN6103-K0R - CPU heatsink: 25ST1-44320H-A0R/25ST1-44320I-A0R - Back plane board: 9CBPH00NR-00 - Power Supply: 25EP0-222001-D0S - Ring topology kit: 6NH23NR48SR-00 (in option)
Front I/O	-		
Rear I/O	Total: 8 x USB 3.0, 4 x VGA, 8 x RJ45, 4 x MLAN, 1 x CMC LAN		



Learn more about GIGABYTE server solutions, visit www.gigabyte.com/Enterprise

* All specifications are subject to change without notice. Please visit our website for the latest information.

* AMD, and the AMD Arrow logo, AMD EPYC and combinations thereof are trademarks of Advanced Micro Devices, Inc.

* All other brands, logos and names are property of their respective owners.

© 2021 GIGABYTE Technology Co., Ltd. All rights reserved.