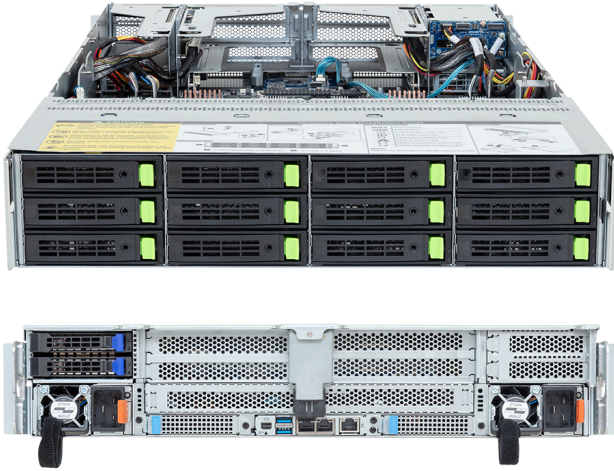


R284-A90-IAL1

Rack Server - Intel® Xeon® 6 -
2U DP 12+2-Bay Gen5 NVMe/SATA/SAS-4 Immersion



Key Features

- Immersion Cooling Server
- Dual Intel® Xeon® 6900-Series Processors
- 12-Channel DDR5 RDIMM / MRDIMM, 24 x DIMMs
- 2 x 1Gb/s LAN ports via Intel® I350-AM2
- 12 x 3.5"/2.5" Gen5 NVMe/SATA/SAS-4 bays
- 2 x 2.5" SATA/SAS-4 bays
- 2 x M.2 slots with PCIe Gen5 x4 interface
- 2 x FHHL Dual-slot PCIe Gen5 x16 slots
- 2 x FHHL Single-slot PCIe Gen5 x16 slots
- 1 x LP PCIe Gen5 x16 slot
- 2 x OCP NIC 3.0 PCIe Gen5 x16 slots
- 1+1 2700W 80 PLUS Titanium redundant power supplies

Applications

Networks Server, Servers for Hybrid/Private Cloud...

Specification

| | | | |
|-------------------------|---|------------------------------|---|
| Dimensions | 2U (W438 x H87.5 x D815 mm) | Storage | Bottom: 12 x 3.5"/2.5" Gen5 NVMe/SATA/SAS-4 ^[1] Top: 2 x 2.5" SATA/SAS-4 ^[2] Internal M.2: 2 x M.2 (2280/22110), PCIe Gen5 x4 |
| Motherboard | MA94-FS0 | | ^[1] Storage card is required to support SATA and SAS drives. ^[2] SAS card is required to support SAS drives. |
| CPU | Intel® Xeon® 6 Processors - Intel® Xeon® 6900-Series Processors Dual processor, TDP up to 500W | RAID | Require RAID add-in cards Onboard VROC key header |
| OS Compatibility | OS Support List | PCIe Expansion Slots | 2 x FHHL Dual-slot PCIe Gen5 x16 2 x FHHL Single-slot PCIe Gen5 x16 1 x LP PCIe Gen5 x16 2 x OCP NIC 3.0 PCIe Gen5 x16, Support NCSI |
| Socket | 2 x LGA 7529 (Socket BR) | I/O Ports | Top: 2 x USB 3.2 Gen1, 1 x Mini-DP, 2 x RJ45, 1 x MLAN |
| Chipset | System on Chip | TPM | 1 x TPM header (SPI), Optional TPM2.0 kit: CTM012 1 x PRoT connector (only enabled on RoT SKU) |
| Memory | 12-Channel DDR5 RDIMM/MRDIMM, 24 x DIMMs [RDIMM] Up to 6400 MT/s [MRDIMM] Up to 8800 MT/s ^[1] ^[1] MRDIMMs are supported only on select Intel® Xeon® 6 processors with P-cores. | Power Supply | 1+1 2700W 80 PLUS Titanium redundant power supplies AC Input: 100-240V *The system power supply requires C19 power cord. |
| LAN | 2 x 1Gb/s LAN (1 x Intel® I350-AM2), Support NCSI 1 x 10/100/1000 Mbps Management LAN | Operating Properties | Operating coolant temperature: 20°C to 35°C Non-operating: -40°C to 60°C, 20% to 95% (non-condensing) |
| Video | Integrated in ASPEED® AST2600 - 1 x Mini-DP | Packaging Content | 1 x R284-A90-IAL1 2 x CPU heatsinks 1 x Mini-DP to D-Sub cable 2 x Carriers |
| | | Ordering Part Numbers | 6NR284A90DR000IAL1* |



Learn more at: <https://www.gigabyte.com/Enterprise>

* All specifications are subject to change without notice. Please visit our website for the latest information.

* All trademarks and logos are the properties of their respective holders.

© 2026 Giga Computing Technology Co., Ltd. All rights reserved.

Last updated: Jan 30, 2026

Designed by

