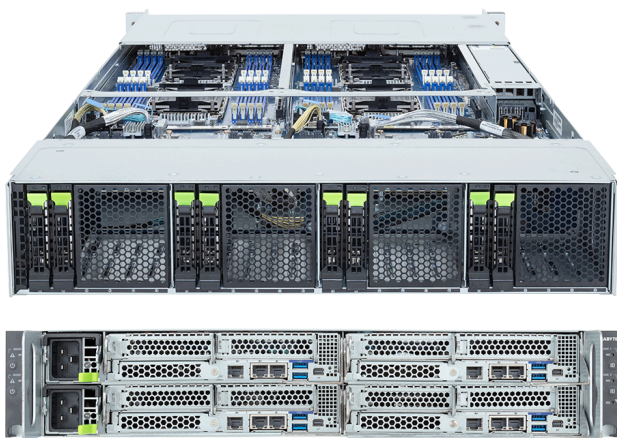


H274-S61-IAW1

High Density Server - Intel® Xeon® 6700/6500-Series Processors -
2U 4-Node DP 8-Bay Gen5 NVMe/SATA/SAS-4 Immersion



Key Features

- Immersion Cooling Server
- 2U 4-node server system
- Dual Intel® Xeon® 6700/6500-Series Processors per node
- 8-Channel DDR5 RDIMM/MRDIMM per CPU with 16 x DIMMs per node
- 8 x 1 Gb/s LAN ports via Intel® I350-AM2
- 8 x 2.5" Gen5 NVMe/SATA/SAS-4 bays
- 4 x M.2 slots with PCIe Gen4 x4 **(optional)**
- 8 x LP PCIe x16 slots with Gen5 x16 lanes
- 4 x OCP NIC 3.0 PCIe Gen5 x16 slots
- Dual 3000 W 80 PLUS Titanium redundant power supplies

Applications

High-Performance Computing Server, High Converged Server,
Servers for Hybrid/Private Cloud...

Specification

| | | | |
|-------------------------|--|------------------------------|---|
| Dimensions | 2U 4-Node (W440 x H87.5 x D877 mm) | RAID | Require RAID add-in cards Onboard VROC key headers |
| Motherboard | MS64-HD0 | PCIe Expansion Slots | 8 x LP PCIe Gen5 x16 4 x OCP NIC 3.0 PCIe Gen5 x16, Support NCSI |
| CPU | Intel® Xeon® 6 Processors - Intel® Xeon® 6700-Series Processors - Intel® Xeon® 6500-Series Processors Dual processor per node, TDP up to 350 W | I/O Ports | Top: 8 x USB 3.2 Gen1, 4 x Mini-DP, 8 x RJ45, 4 x MLAN |
| OS Compatibility | OS Support List | TPM | 4 x TPM headers (SPI), Optional TPM 2.0 kit: CTM012 4 x PRoT connectors (only enabled on RoT SKU) |
| Socket | 8 x LGA 4710 (Socket E2) | Power Supply | Dual 3000 W 80 PLUS Titanium redundant power supplies AC Input: 100-240 V *The system power supply requires C19 power cord. |
| Chipset | System on Chip | Operating Properties | Operating coolant temperature: 20°C to 35°C Non-operating: -40°C to 60°C, 20% to 95% (non-condensing) |
| Memory | 8-Channel DDR5 RDIMM/MRDIMM, 64 x DIMMs [RDIMM] Up to 6400 MT/s [MRDIMM] Up to 8000 MT/s [1] [1] MRDIMMs are supported only on select Intel® Xeon® 6 processors with P-cores. | Packaging Content | 1 x H274-S61-IAW1 8 x CPU heatsinks 1 x Mini-DP to D-Sub cable 16 x Carriers |
| LAN | 8 x 1 Gb/s LAN (4 x Intel® I350-AM2), Support NCSI 4 x 10/100/1000 Mb/s Management LAN | Ordering Part Numbers | 6NH274S61DR000IAW1* |
| Video | Integrated in ASPEED® AST2600 x 4 - 4 x Mini-DP | Optional Parts | - M.2 riser card - CMTP160: 9CMTP160NR-00* |
| Storage | Bottom: 8 x 2.5" Gen5 NVMe/SATA/SAS-4 [1] Optional internal M.2: 4 x M.2 (2260/2280/22110), PCIe Gen4 x4 [1] SAS card is required to support SAS drives. | | |



Learn more at: <https://www.gigabyte.com/Enterprise>

* All specifications are subject to change without notice. Please visit our website for the latest information.

* All trademarks and logos are the properties of their respective holders.

© 2026 Giga Computing Technology Co., Ltd. All rights reserved.

Last updated: May 13, 2026

Designed by

