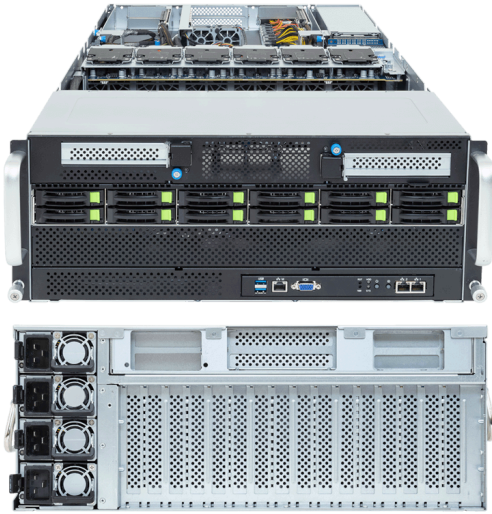
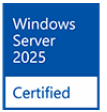


# G494-SB4-AAP2

HPC/AI Server - Intel® Xeon® 6700/6500 -  
4U DP 8 x PCIe Gen5 GPUs



## Key Features

- Supports up to 8 x dual-slot Gen5 GPUs
- **Conditionally** supports
  - 8 x NVIDIA H200 NVL PCIe GPUs with 4-way NVLink bridges
  - 8 x NVIDIA RTX PRO™ 6000 Blackwell Server Edition GPUs
- Dual Intel® Xeon® 6700/6500-Series Processors
- 8-Channel DDR5 RDIMM/MRDIMM per CPU with 32 x DIMMs
- 2 x 10 Gb/s LAN ports via Intel® X710-AT2
- 12 x 2.5" Gen5 NVMe/SATA/SAS-4 hot-swap bays
- 8 x FHFL PCIe x16 slots with Gen5 x16 lanes for GPUs
- 2 x FHHL PCIe x16 slots with Gen5 x16 lanes
- 3 x LP PCIe x16 slots with Gen5 x16 lanes
- 2 x FHHL PCIe x16 slots with Gen5 x16 lanes on the front side
- Quad 3000 W 80 PLUS Titanium redundant power supplies

## Specification

<b>Dimensions</b>	4U (W448 x H176 x D880 mm) (W448 x H176 x D1000.5 mm with optional fan kit)	<b>PCIe Expansion Slots</b>	<b>Rear:</b> 8 x FHFL PCIe Gen5 x16, for GPUs 2 x FHHL PCIe Gen5 x16 3 x LP PCIe Gen5 x16 <b>Front:</b> 2 x FHHL PCIe Gen5 x16
<b>Motherboard</b>	MSB4-G40	<b>I/O Ports</b>	<b>Front:</b> 2 x USB 3.2 Gen1, 1 x VGA, 2 x RJ45, 1 x MLAN
<b>CPU</b>	Intel® Xeon® 6 Processors - Intel® Xeon® 6700-Series Processors - Intel® Xeon® 6500-Series Processors Dual processor, TDP up to 350 W	<b>TPM</b>	1 x TPM header (SPI), Optional TPM 2.0 kit: CTM012 1 x ProT connector (only enabled on RoT SKU)
<b>OS Compatibility</b>	<a href="#">OS Support List</a>	<b>Power Supply</b>	Quad 3000 W 80 PLUS Titanium redundant power supplies AC Input: 100-240 V  *The system power supply requires C19 power cord.
<b>Socket</b>	2 x LGA 4710 (Socket E2)	<b>System Fans</b>	2 x 40x40x28mm 12 x 60x60x56mm
<b>Chipset</b>	System on Chip	<b>Operating Properties</b>	Operating: 10°C to 35°C, 8% to 80% (non-condensing) Non-operating: -40°C to 60°C, 20% to 95% (non-condensing)
<b>Memory</b>	8-Channel DDR5 RDIMM/MRDIMM, 32 x DIMMs <b>[RDIMM]</b> Up to 6400 MT/s (1DPC), 5200 MT/s (2DPC) <b>[MRDIMM]</b> Up to 8000 MT/s <sup>[1]</sup>  <sup>[1]</sup> MRDIMMs are supported only on select Intel® Xeon® 6 processors with P-cores and only in a 1DPC configuration.	<b>Packaging Content</b>	1 x G494-SB4-AAP2 2 x CPU fansinks 8 x GPU power cables (16-pin, 150mm) 4 x Carriers 1 x L-shape Rail kit
<b>LAN</b>	2 x 10 Gb/s LAN (1 x Intel® X710-AT2), Support NCSI 1 x 10/100/1000 Mb/s Management LAN	<b>Ordering Part Numbers</b>	6NG494SB4DR000AAP2*
<b>Video</b>	Integrated in ASPEED® AST2600 - 1 x VGA port	<b>Optional Parts</b>	- 8080 fan kit for 600 W GPUs: 6NG494SBXK002AFN001* (packaging dimensions: L441 x W242 x H272 mm)
<b>Storage</b>	<b>Front hot-swap:</b> 12 x 2.5" Gen5 NVMe/SATA/SAS-4 <sup>[1]</sup>  <sup>[1]</sup> Storage card is required to support SATA and SAS drives.		
<b>RAID</b>	Require RAID add-in cards Onboard VROC key headers		



Learn more at: <https://www.gigabyte.com/Enterprise>

\* All specifications are subject to change without notice. Please visit our website for the latest information.

\* All trademarks and logos are the properties of their respective holders.

© 2026 Giga Computing Technology Co., Ltd. All rights reserved.

Last updated: May 18, 2026

Designed by

