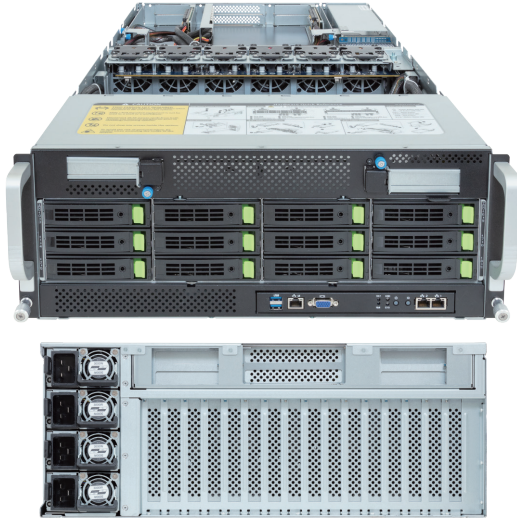


G493-SB4-AAP1

HPC/AI Server - 4U DP NVIDIA OVX™ 8 x GPUs

 **NVIDIA**
Certified



Features

- NVIDIA-Certified Systems™ - OVX Servers
- Optimized for NVIDIA OVX™ L40S Server with 8 GPUs configuration
- Dual 5th/4th Gen Intel® Xeon® Scalable Processors
- Dual Intel® Xeon® CPU Max Series
- 8-Channel DDR5 RDIMM, 32 x DIMMs
- Dual ROM Architecture
- 2 x 10Gb/s LAN ports via Intel® X710-AT2
- 12 x 3.5"/2.5" Gen5 NVMe/SATA/SAS-4 hot-swappable bays
- 1 x M.2 slot with PCIe Gen3 x1 interface
- 8 x FHFL PCIe Gen5 x16 slots for GPUs
- 2 x FHHL PCIe Gen5 x16 slots
- 4 x LP PCIe Gen5 x16 slots
- 1 x LP PCIe Gen4 x16 slot on the front side
- 3+1 3000W 80 PLUS Titanium redundant power supplies

Specification

Dimensions	4U (W448 x H176 x D880 mm)	Video	ASPEED® AST2600 Integrated 2D Graphic Adapter
Motherboard	MSB3-G40	I/O Ports	Front: 2 x USB 3.2 Gen1, 1 x VGA, 2 x RJ45, 1 x MLAN Internal: 1 x TPM header, 1 x VROC connector
CPU	5th/4th Generation Intel® Xeon® Scalable Processors Intel® Xeon® CPU Max Series Dual processor, LGA 4677 (Socket E), TDP up to 350W <i>- NVIDIA OVX Specifications: 2 x Intel® Xeon® Gold 8480+</i>	Backplane Board	PCIe Gen5 x4 or SATA 6Gb/s or SAS-4 24Gb/s
Chipset	Intel® C741 Chipset	TPM	1 x TPM header with SPI interface (Optional TPM2.0 kit: CTM010)
Memory	8-Channel DDR5 memory, 32 x DIMM slots RDIMM up to 96GB supported; 3DS RDIMM up to 256GB supported Memory speed: Up to 5600 MT/s (1DPC), 4400 MT/s (2DPC) <i>- NVIDIA OVX Specifications: Min 768GB DDR5 ECC (1 DIMM per slot)</i>	Power Supply	3+1 3000W 80 PLUS Titanium redundant power supplies AC Input: 100-240V (The system PSU requires C19 power cord)
LAN	2 x 10Gb/s LAN ports (1 x Intel® X710-AT2) - Supported NCSI 1 x 10/100/1000 management LAN	OS Compatibility	Windows Server, Red Hat Enterprise Linux Server, VMware ESXi, SUSE Linux Enterprise, Ubuntu Server, Citrix Hypervisor
Storage	12 x 3.5"/2.5" Gen5 NVMe/SATA/SAS-4* hot-swappable bays *SAS card is required to support SAS drives. <i>- NVIDIA OVX Specifications: 1 x 1TB NVMe Host Boot Drive</i> <i>- NVIDIA OVX Specifications: 2 x 4TB NVMe Host Storage</i> 1 x M.2 slot (M-key, PCIe Gen3 x1, supports 2280/22110)	System Management	ASPEED® AST2600 management controller GIGABYTE Management Console (AMI MegaRAC SP-X)
RAID	Intel® SATA RAID 0/1/10/5; support optional RAID add-in cards	System Fans	12 x 60x60x38mm (23,000rpm)
Expansion Slots	8 x PCIe Gen5 x16 FHFL slots for GPUs (with PCIe switches) <i>- NVIDIA OVX Specifications: 8 x NVIDIA L40S</i> 2 x PCIe Gen5 x16 FHHL slots <i>- NVIDIA OVX Specifications: 1 x BlueField-3 (B3220)</i> 4 x PCIe Gen5 x16 low-profile slots <i>- NVIDIA OVX Specifications: 4 x ConnectX-7</i> 1 x PCIe Gen4 x16 low-profile slot	Operating Properties	Operating temperature: 10°C to 30°C Operating humidity: 8-80% (non-condensing) Non-operating temperature: -40°C to 60°C Non-operating humidity: 20%-95% (non-condensing)
		Packaging Content	1 x G493-SB4-AAP1, 2 x CPU heatsinks, 6 x Carriers, 8 x GPU power cables (12VHPWR), 1 x L-shape Rail kit Packaging Dimensions: 1200 x 800 x 444 mm w/ pallet
		Reference Numbers	Barebone package: 6NG493SB4DR000ABP1* <i>- L-shape Rail kit: 25HB2-A96100-K0R</i> <i>- CPU fansink: 25ST1-363204-C1R</i> <i>- GPU power cable (12VHPWR, 150mm): 25CRI-150004-Y4R</i> <i>- Power supply: 25EP0-23000C-D0S</i> <i>- C19 power cord 125V/15A (US): 25CP1-018000-Q0R (optional)</i> <i>- C19 power cord 250V/16A (EU): 25CP3-01830H-Q0R (optional)</i> <i>- C19 power cord 125V/15A (JP): 25CPA-01830B-Q0R (optional)</i>



Learn more at <https://www.GIGABYTE.com/enterprise>

* All specifications are subject to change without notice. Please visit our website for the latest information.
* Intel, the Intel logo, Xeon, and other Intel marks are trademarks of Intel Corporation or its subsidiaries.
* All other brands, logos and names are property of their respective owners.

© 2024 Giga Computing Technology Co., Ltd. All rights reserved.

Designed by

