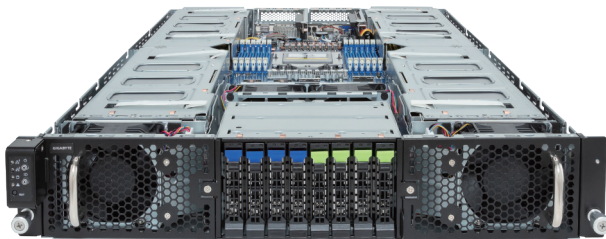


G293-Z21-AAP1

HPC/AI Server - 2U UP 4 x PCIe Gen5 GPUs



Key Features

- Supports up to 4 x Dual slot Gen5 GPUs
- Single AMD EPYC™ 9005/9004 Series Processors
- 12-Channel DDR5 RDIMM, 12 x DIMMs
- Dual ROM Architecture
- 2 x 10Gb/s LAN ports via Broadcom® BCM57416
- 4 x 2.5" Gen5 NVMe/SATA/SAS hot-swap bays
- 4 x 2.5" SATA/SAS hot-swap bays
- 2 x M.2 slots with PCIe Gen5 x4 interface
- 4 x PCIe Gen5 x16 or 8 x PCIe Gen5 x8 FHFL slots for GPUs
- 2 x PCIe Gen5 x16 LP slots for add-in cards
- Dual 3000W 80 PLUS Titanium redundant power supply

Application

AI, AI Training, AI Inference, HPC

Specification

Dimensions	2U (W448 x H87.5 x D800 mm)	Rear I/O Ports	2 x USB 3.2 Gen1, 1 x VGA, 2 x RJ45, 1 x MLAN
Motherboard	MZ23-G20	Backplane Board	Speed and bandwidth: PCIe Gen5 x4 or SATA 6Gb/s or SAS 12Gb/s
CPU	AMD EPYC™ 9005 Series Processors AMD EPYC™ 9004 Series Processors Single processor, cTDP up to 300W - The EPYC 9005 CPUs with a cTDP of 300W are supported under only ambient temperatures of 30°C.	Security Modules	1 x TPM header with SPI interface (Optional TPM2.0 kit: CTM010)
Sock	1 x LGA 6096 (Socket SP5)	Power Supply	Dual 3000W 80 PLUS Titanium redundant power supply AC Input: 100-240V The system power supply requires C19 power cord.
Chipset	System on Chip	System Management	ASPEED® AST2600 Baseboard Management Controller GIGABYTE Management Console web interface
Memory	12-Channel DDR5 RDIMM, 12 x DIMMs [EPYC 9005] Up to 6000 MT/s [EPYC 9004] Up to 4800 MT/s	OS Support	Windows Server, Red Hat Enterprise Linux server, Ubuntu, SUSE Linux Enterprise server, VMware ESXi, Citrix Hypervisor
LAN	2 x 10Gb/s LAN (1 x Broadcom® BCM57416) - Supports NCSI 1 x 10/100/1000 Mbps Management LAN	System Fans	8 x 80x80x38mm (18,300rpm)
Video	Integrated in ASPEED® AST2600 - 1 x Mini-DP	Operating Properties	Operating temperature: 10°C to 35°C Operating humidity: 8%-80% (non-condensing) Non-operating temperature: -40°C to 60°C Non-operating humidity: 20%-95% (non-condensing)
Storage	Front hot-swap: 4 x 2.5" Gen5 NVMe/SATA/SAS 4 x 2.5" SATA/SAS *SAS card is required to support SAS drives. Internal M.2: 2 x M.2 (2280/22110), PCIe Gen5 x4	Packaging Content	1 x G293-Z21-AAP1, 1 x CPU heatsink, 1 x L-shape Rail kit, 4 x GPU power cables (12VHPWR, 250mm) Packaging Dimensions: 1133 x 724 x 261 mm
RAID	Require RAID add-in cards	Part Numbers	Barebone package: 6NG293Z21DR000ACP1* Optional parts: - C19 power cord 125V/15A (US): 25CP1-018000-Q0R - C19 power cord 250V/16A (EU): 25CP3-01830H-Q0R - C19 power cord 125V/15A (JP): 25CPA-01830B-Q0R - RMA packaging: 6NG293Z21SR-RMA-A100
Expansion Slots	4 x PCIe Gen5 x16 or 8 x PCIe Gen5 x8 FHFL slots for GPUs 2 x PCIe Gen5 x16 LP slots for add-in cards		



Learn more at <https://www.GIGABYTE.com/enterprise>

* All specifications are subject to change without notice. Please visit our website for the latest information.
* AMD, the AMD Arrow logo, EPYC and combinations thereof are trademarks of Advanced Micro Devices, Inc.
* All other brands, logos and names are property of their respective owners.

© 2024 Giga Computing Technology Co., Ltd. All rights reserved.

Designed by

