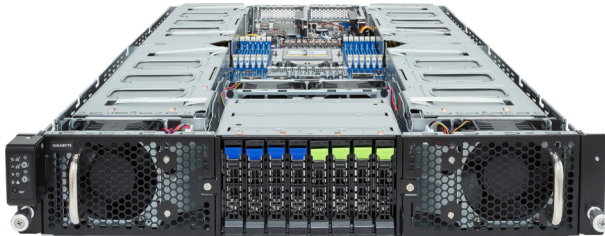


G293-Z20-AAP1

GPU Server - 2U UP 8-GPU 8-bay NVMe/SATA



Features

- Supports up to 8 x dual-slot GPU cards
- AMD EPYC™ 9004 series processors
- Single processor, 5nm technology
- 12-Channel RDIMM DDR5, 12 x DIMMs
- Dual ROM Architecture supported
- 2 x 10Gb/s BASE-T LAN ports
- 1 x Dedicated management port
- 4 x 2.5" Gen5 NVMe/SATA hot-swappable bays
- 4 x 2.5" SATA hot-swappable bays
- 2 x M.2 slots with PCIe Gen5 x4 interface
- 8 x FHFL Gen4 x16 slots for GPUs
- 2 x LP PCIe Gen5 x16 slots for add-on cards
- Dual 3000W (240V) 80 PLUS Titanium redundant power supply

Specification

Dimensions	2U (W448 x H87.5 x D800mm)	TPM	1 x TPM header with SPI interface Optional TPM2.0 kit: CTM010
Motherboard	MZ23-G20	Power Supply	Dual 3000W 80 PLUS Titanium redundant power supply AC Input: 100-240V
CPU	AMD EPYC™ 9004 series processor family Single processor, 5nm technology, cTDP up to 300W Up to 84-core, 168 threads per processor 1 x LGA 6096 Socket SP5	System Management	Aspeed® AST2600 management controller GIGABYTE Management Console (AMI MegaRAC SP-X)
Chipset	System on Chip	OS Compatibility	Windows Server 2019 / 2022 RHEL 8.6 / 8.7 / 9.0 / 9.1 (x64) SLES 15 SP4 (x64) Ubuntu 20.04.5 LTS / 22.04 LTS / 22.04.1 LTS (x64) VMware ESXi 7.0 Update 3i / 8.0 Citrix Hypervisor 8.2.1
Memory	12 x DIMM slots 12-Channel DDR5 memory, up to 4800 MHz RDIMM modules up to 128GB supported 3DS RDIMM modules up to 256GB supported	System Fans	8 x 80x80x38mm (18,300rpm)
LAN	2 x 10Gb/s BASE-T LAN ports (1 x Broadcom® BCM57416) Supported NCSI function 1 x 10/100/1000 management LAN	Operating Properties	Operating temperature: 10°C to 35°C Operating humidity: 8-80% (non-condensing) Non-operating temperature: -40°C to 60°C Non-operating humidity: 20%-95% (non-condensing)
Video	Integrated in Aspeed AST2600 2D Video Graphic Adapter with PCIe bus interface 1920x1200@60Hz 32bpp, DDR4 SDRAM	Packaging Content	1 x G293-Z20 1 x CPU heatsink 1 x Rail kit
Storage	4 x 2.5" Gen5 NVMe/ SATA/ SAS hot-swappable bays 4 x 2.5" SATA/ SAS hot-swappable bays SAS card is required for SAS devices support	Reference Numbers	Barebone package: 6NG293Z20DR000AAP1* - Motherboard: 9MZ23G20UR-000 - Rail kit: 25HB2-A86102-K0R - CPU heatsink: 25ST1-25320N-M1R - Power supply: 25EP0-230005-G1S - C19 power cord 125V/15A (US): 25CP1-018000-Q0R (optional) - C19 power cord 250V/16A (EU): 25CP3-01830H-Q0R (optional)
Expansion Slots	8 x PCIe Gen4 x16 FHFL slots for GPUs 2 x PCIe Gen5 x16 low-profile slots 2 x M.2 slots:M-key, PCIe Gen5 x4, supports 2280/22110 cards		
Rear I/O	2 x USB 3.2 Gen1, 1 x VGA, 2 x RJ45, 1 x MLAN		
Backplane I/O	PCIe Gen5 x4 or SATA 6Gb/s or SAS 12Gb/s		



Learn more about GIGABYTE server, visit <https://www.gigacomputing.com>

* All specifications are subject to change without notice. Please visit our website for the latest information.
* AMD, the AMD Arrow logo, EPYC and combinations thereof are trademarks of Advanced Micro Devices, Inc.
* All other brands, logos and names are property of their respective owners.

© 2023 Giga Computing Technology Co., Ltd. All rights reserved.

Engineered by

