

## How to update BIOS and EC for S1080 series

### PUBLISHED FROM GIGABYTE

#### [HOW-TO]

- ✓ You will learn how to update BIOS and EC for S1080 under DOS correctly.  
(EC can only be updated under DOS)

#### [Tool kit]

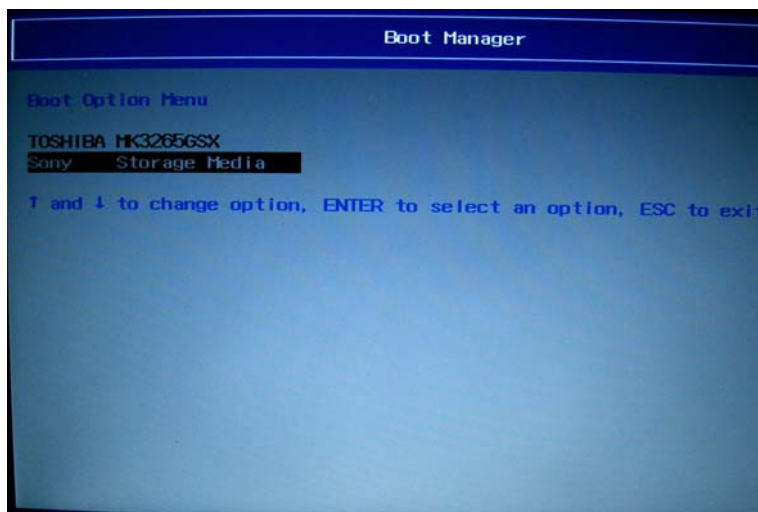
USB bootable disk

USB external keyboard

#### [STEP – Download and update BIOS and EC for S1080]

1. Connect power core into DC jack.
2. Download the latest version of BIOS from Official Web Site.
3. Unzip the package to USB bootable disk.
4. Restart the computer with USB bootable disk plugged in.
5. Press F12 when boot screen shows then choose your USB bootable disk to boot to DOS.



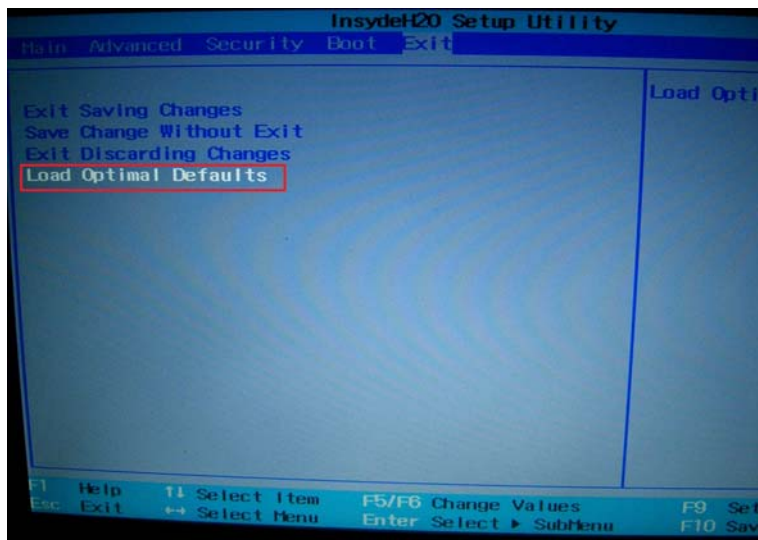


6. Type [go] under the folder that you just unzipped. (for other version of BIOS & EC may have different folder name)



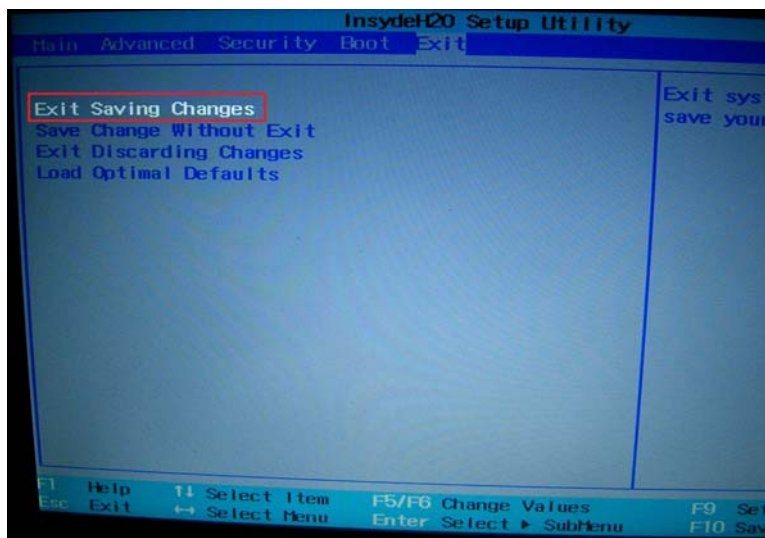
7. Press enter then BIOS update process starts.
8. Once finishing update, system will automatically shut down in 10 seconds.
9. Power on the computer then press F2 to go to BIOS Setup Utility.

10. Select Load Optimal Defaults then press enter.

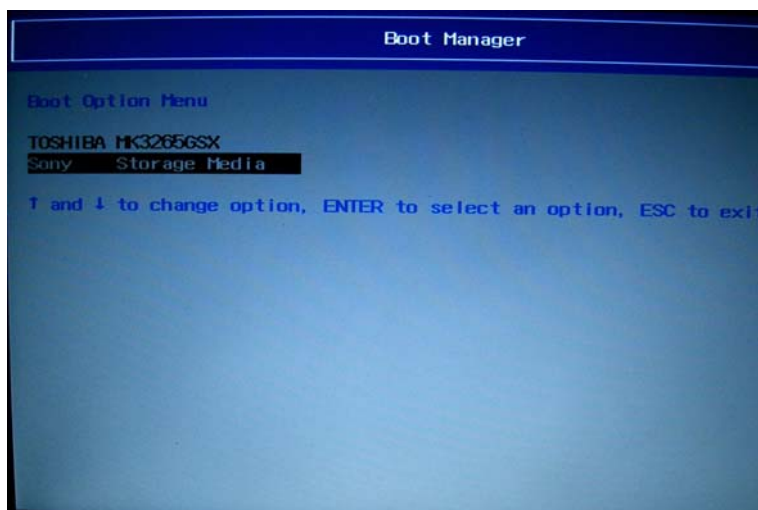


11. Press enter on Yes to load default.

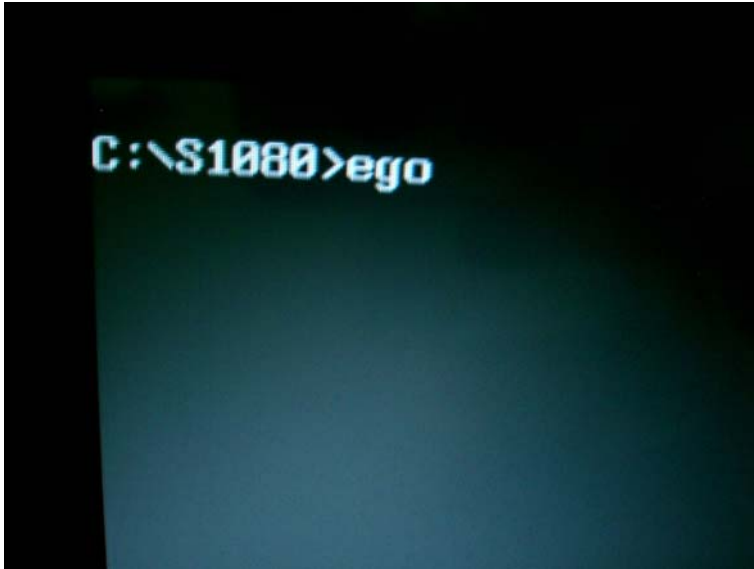
12. Select Exit Saving Changes then press enter.



13. Press F12 when boot screen shows then choose your USB bootable disk to boot to DOS.

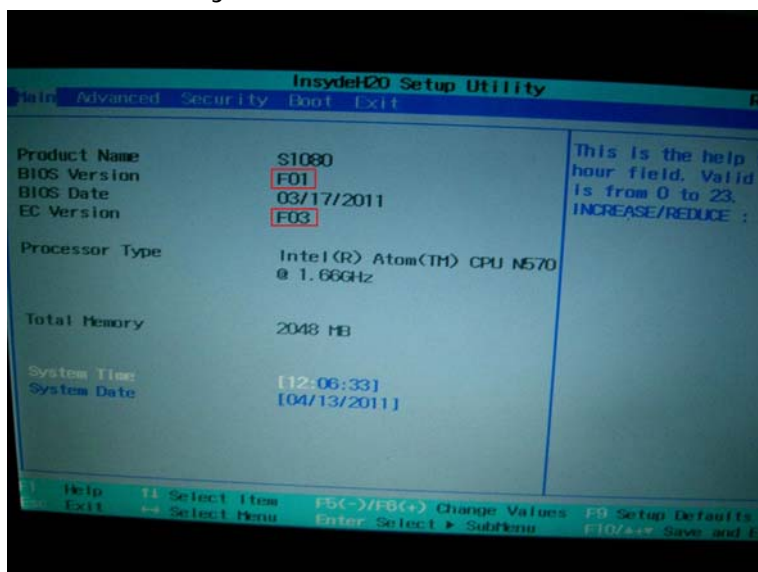


14. Type [ego] under the folder that you just unzipped. (for other version of BIOS & EC may have different folder name)



15. Press enter then EC update process starts.
16. Once finishing update, system will automatically shut down in 10 seconds.
17. Power on the computer and press F2 to go to Setup Utility.

18. Check the System BIOS and EC version if it be correct as the updated version.



## About GIGABYTE *Upgrade Your Life*

GIGABYTE, headquartered in Taipei, Taiwan, is known as a global leading brand in the IT industry, with employees and business channels in almost every country. Founded in 1986, GIGABYTE started as a research and development team and has since taken the lead in the world's motherboard market. On top of motherboards and graphics accelerators, GIGABYTE further expanded its product portfolio to include notebook and desktop PCs, digital home entertainment appliances, networking servers, communications, mobile and handheld devices, servicing every facet of people's lives at home or business. Everyday GIGABYTE aims to "Upgrade Your Life" with the most innovative designs and impeccable quality and services. Visit [www.gigabyte.com](http://www.gigabyte.com) for more information.

## 更新 S1080 的 BIOS 和 EC

PUBLISHED FROM GIGABYTE

### [目標]

- ✓ 於 DOS 下正確地更新 S1080 的 BIOS 和 EC. (EC 僅能於 DOS 下被更新)

### [所需工具]

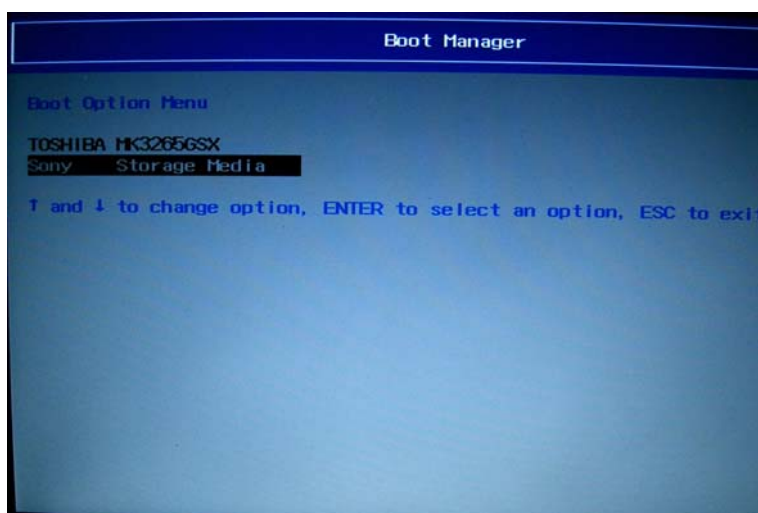
USB 可開機磁碟

USB 外接式鍵盤

### [更新步驟 – 下載並刷新 S1080 的 BIOS 和 EC]

1. 將電源插頭插入電源孔並確認電力由變壓整流器供電.
2. 從技嘉產品網頁下載最新版的 BIOS 壓縮檔.
3. 將您下載下來的壓縮檔解壓縮至 USB 可開機磁碟.
4. 重新開機並插上此 USB 可開機磁碟.

5. 當進入開機時的 POST 畫面按下 F12 鍵並在 Boot Manager 下選擇您的 USB 可開機磁碟.



6. 在剛才已解壓縮的資料夾下鍵入 [go]. (對於不同版本的 BIOS & EC 可能會有不同的資料夾名稱)

```

C:\S1000>dir

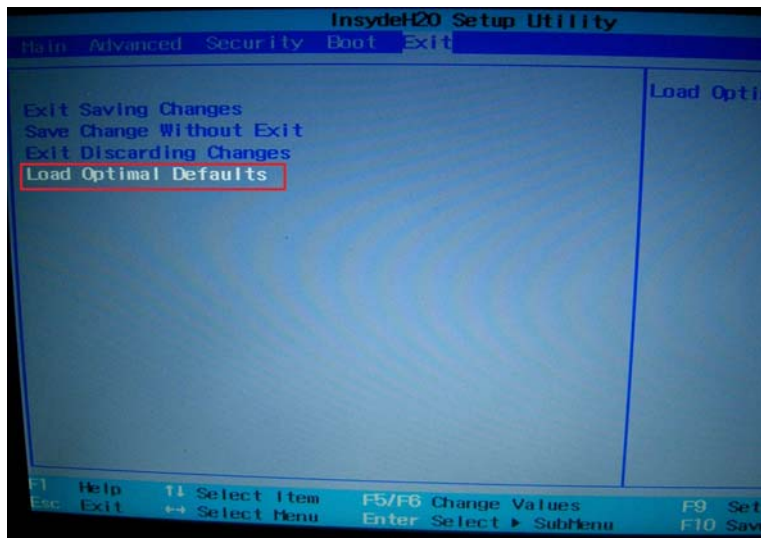
Volume in drive C has no label
Volume Serial Number is 4484-BC68
Directory of C:\S1000

.                <DIR>                04-27-11  9:56a
..               <DIR>                04-27-11  9:56a
DFLASH   EXE           22,084  09-29-09 11:59a
EGO      BAT             21  04-27-11  9:51a
FLASHIT  EXE        408,616  01-28-10  7:05p
GO       BAT             89  03-17-11 12:21p
S1000B   F01       1,048,576  03-17-11 12:09p
S1000E   F03        65,536  04-20-11 10:18a
        6 file(s)        1,544,922 bytes
        2 dir(s)        73,379,840 bytes free

C:\S1000>go
  
```

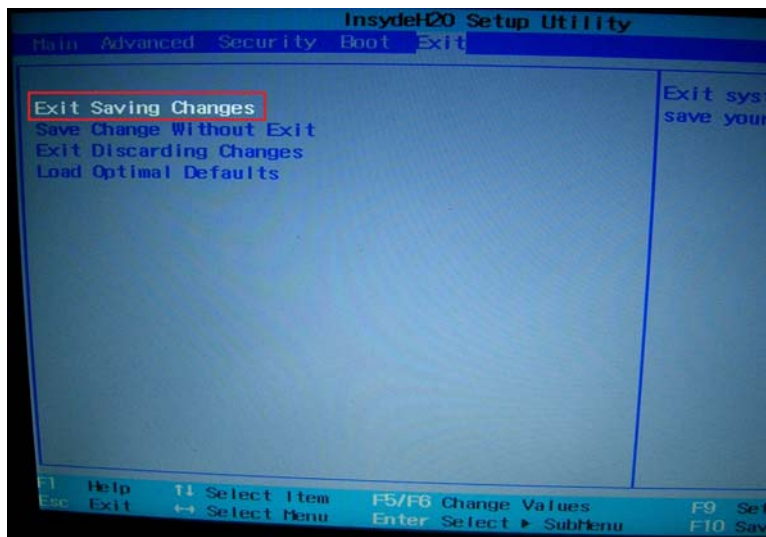
7. 按下 enter 鍵後 BIOS 開始更新.
8. 當完成更新後, 電腦將會在 10 秒內自動關機.
9. 按下電源鍵開機並在 POST 畫面按 F2 鍵進入 BIOS Setup Utility.

10. 選擇 Load Optimal Defaults 並按下 enter 鍵.

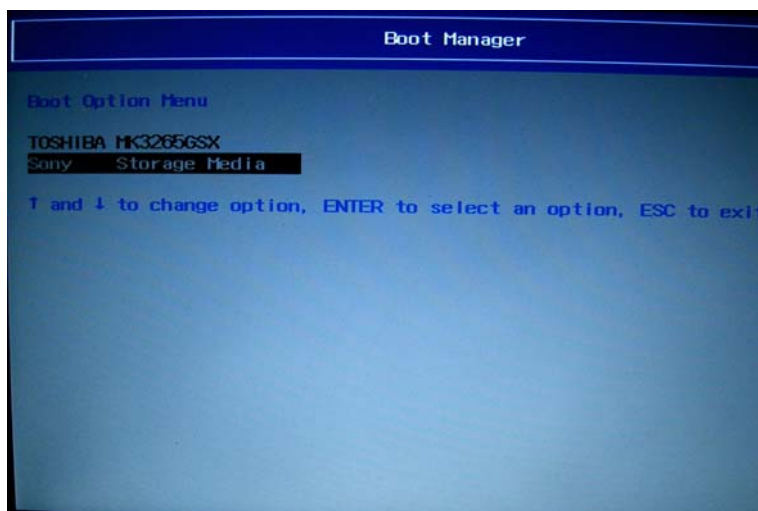


11. 選擇 Yes 並按下 enter 鍵以載入預設值.

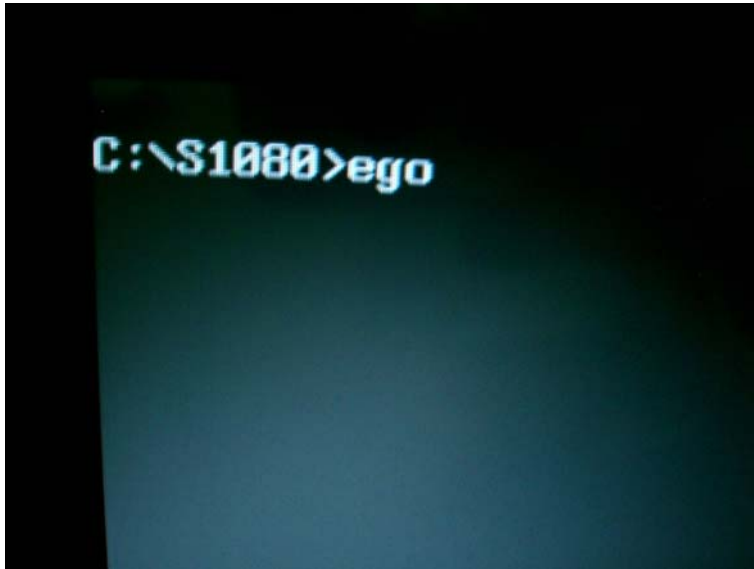
12. 選擇 Exit Saving Changes 並按下 enter 鍵.



13. 當進入開機時的 POST 畫面按下 F12 鍵並在 Boot Manager 下選擇您的 USB 可開機磁碟.

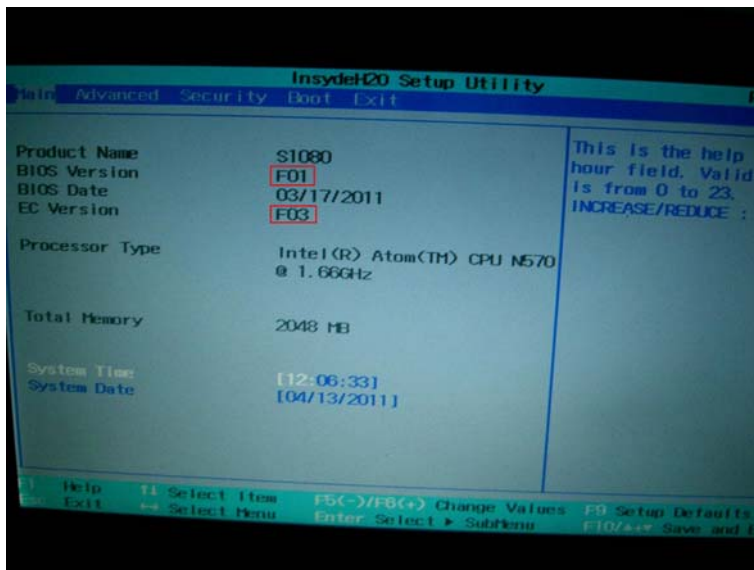


14. 在剛才已解壓縮的資料夾下鍵入 [ego]. (對於不同版本的 BIOS & EC 可能會有不同的資料夾名稱)



15. 按下 enter 鍵後 EC 開始更新.
16. 當完成更新後, 電腦將會在 10 秒內自動關機.
17. 按下電源鍵開機並在 POST 畫面按 F2 鍵進入 BIOS Setup Utility.

18. 檢查紅色圈選處以確認系統 BIOS 和 EC 的版本為最新版.



## About GIGABYTE *Upgrade Your Life*

GIGABYTE, headquartered in Taipei, Taiwan, is known as a global leading brand in the IT industry, with employees and business channels in almost every country. Founded in 1986, GIGABYTE started as a research and development team and has since taken the lead in the world's motherboard market. On top of motherboards and graphics accelerators, GIGABYTE further expanded its product portfolio to include notebook and desktop PCs, digital home entertainment appliances, networking servers, communications, mobile and handheld devices, servicing every facet of people's lives at home or business. Everyday GIGABYTE aims to "Upgrade Your Life" with the most innovative designs and impeccable quality and services. Visit [www.gigabyte.com](http://www.gigabyte.com) for more information.