

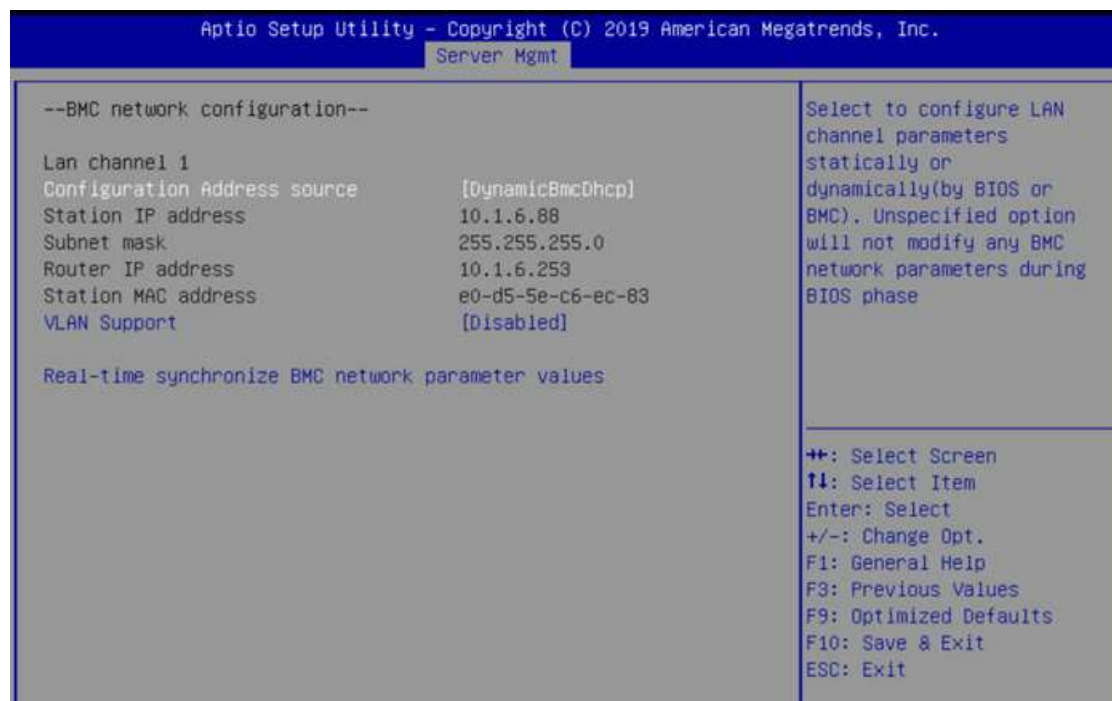
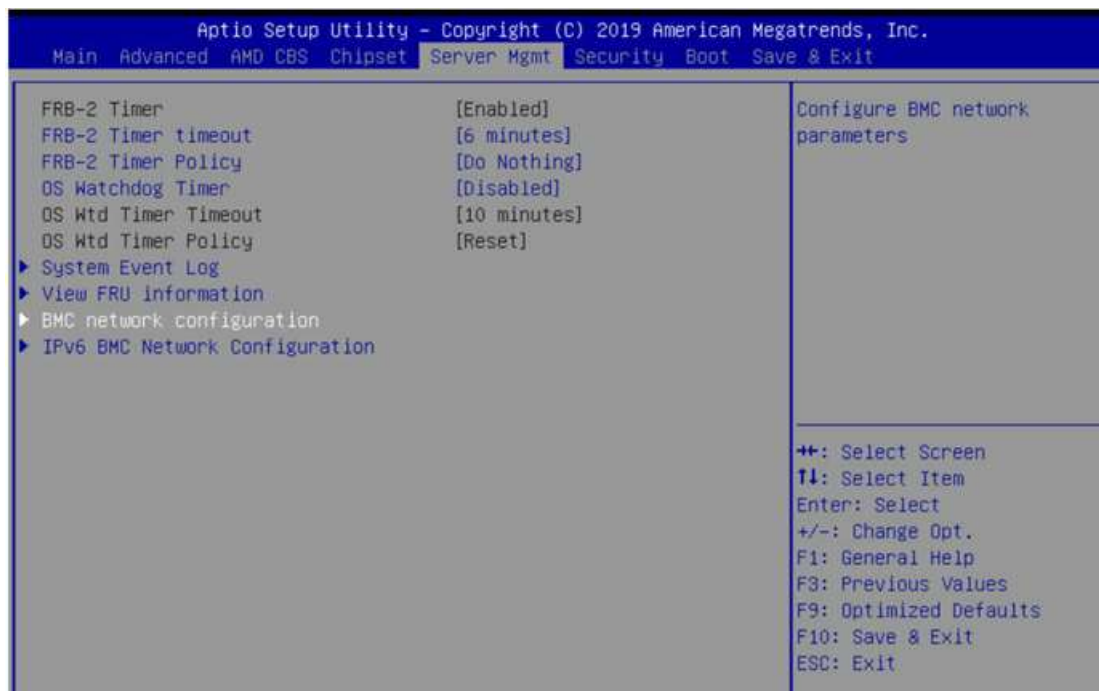
## Gigabyte\_Server\_BMC(AMI)\_Web\_update\_BIOS\_SOP\_R02

Step-1 : Get BMC IP ( method-1) ( After system power on , can see BMC IP at left down side )



## Gigabyte\_Server\_BMC(AMI)\_Web\_update\_BIOS\_SOP\_R02

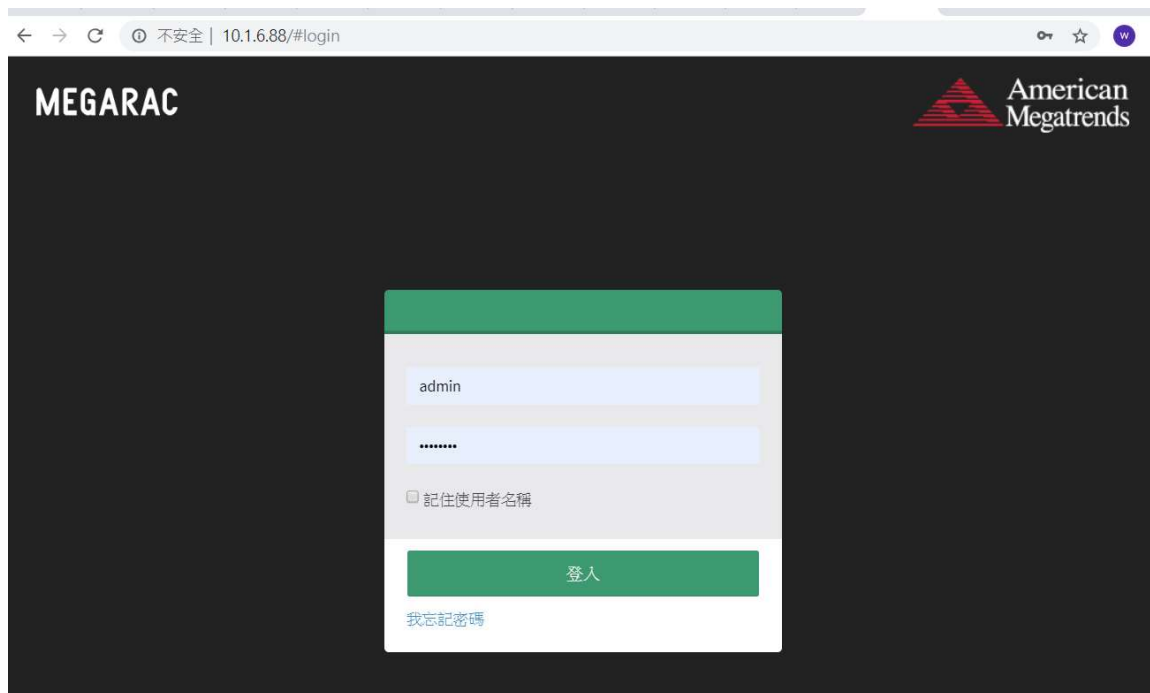
Step-1 : Get BMC IP ( method-2) In BIOS setup page “Server Mgmt”



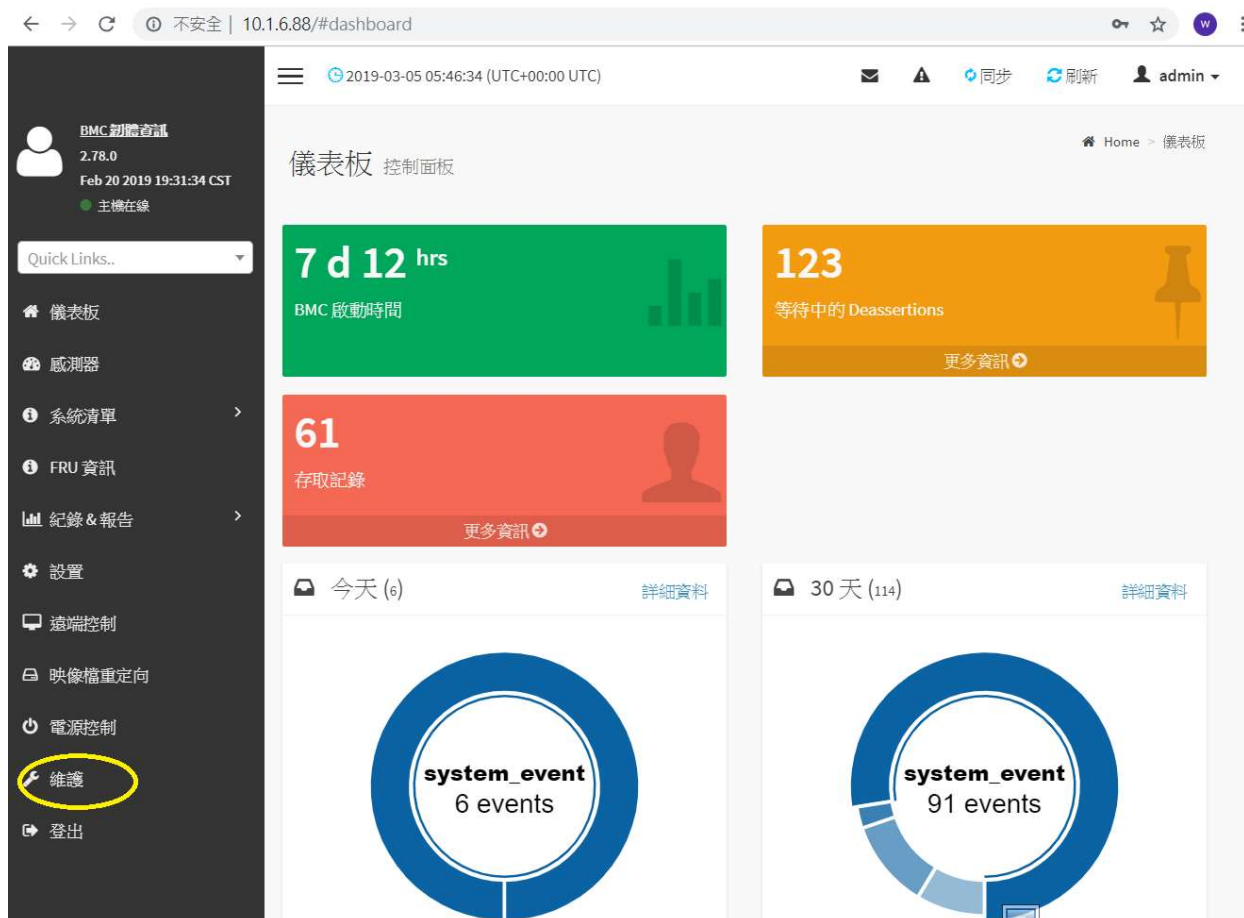
# Gigabyte\_Server\_BMC(AMI)\_Web\_update\_BIOS\_SOP\_R02

Step-2 : Open Web browser and key in BMC IP , in this case, BMC IP is 10.1.6.88

Then key-in **account** and **password** ( **admin** / **password** )

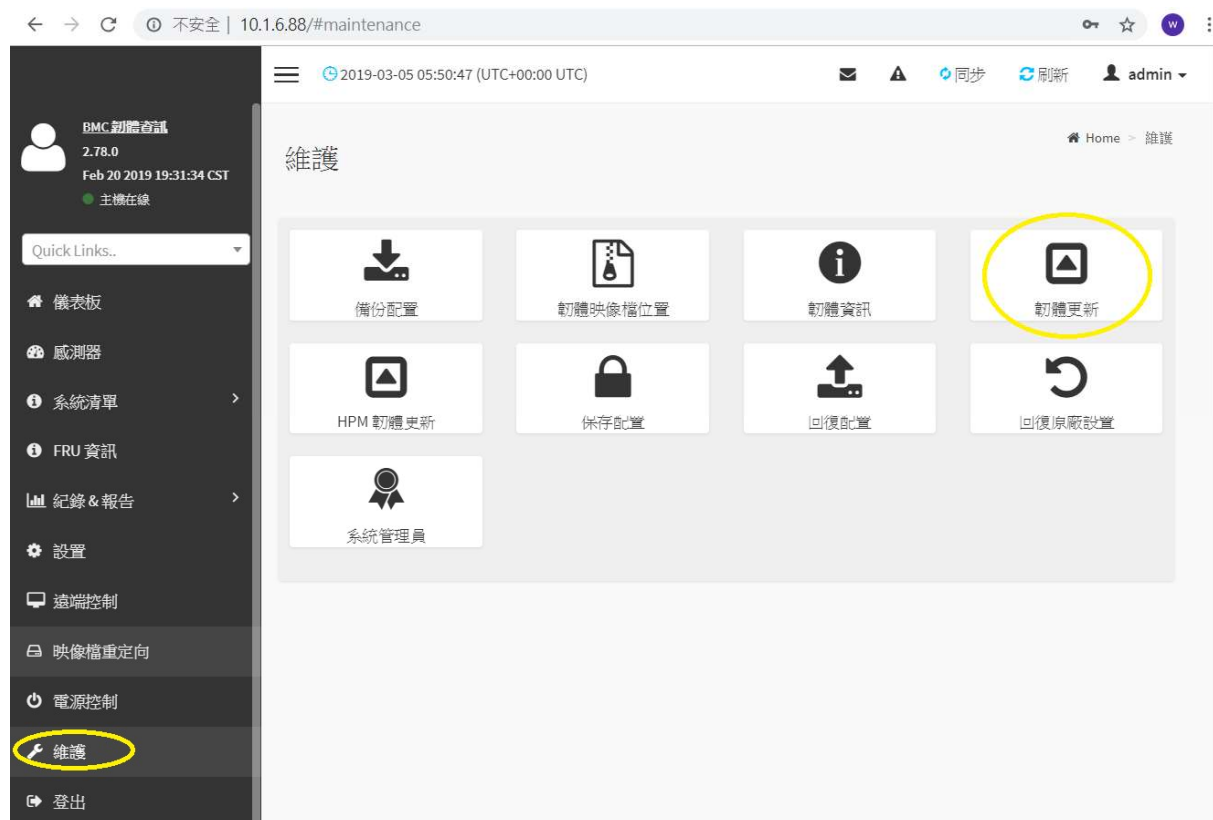


Step-3 : Select and Click left side function icon “Maintain” ( Chinese font : 維護 )

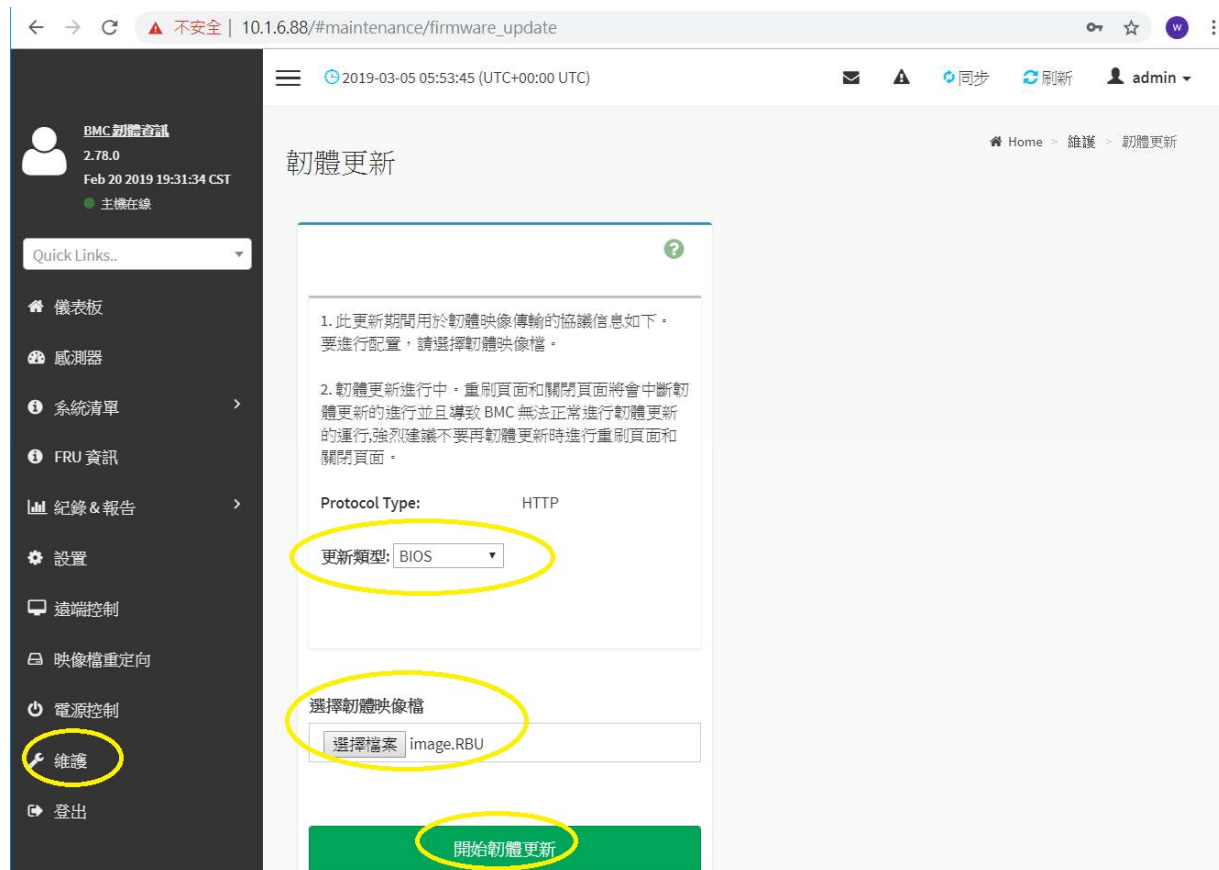


# Gigabyte\_Server\_BMC(AMI)\_Web\_update\_BIOS\_SOP\_R02

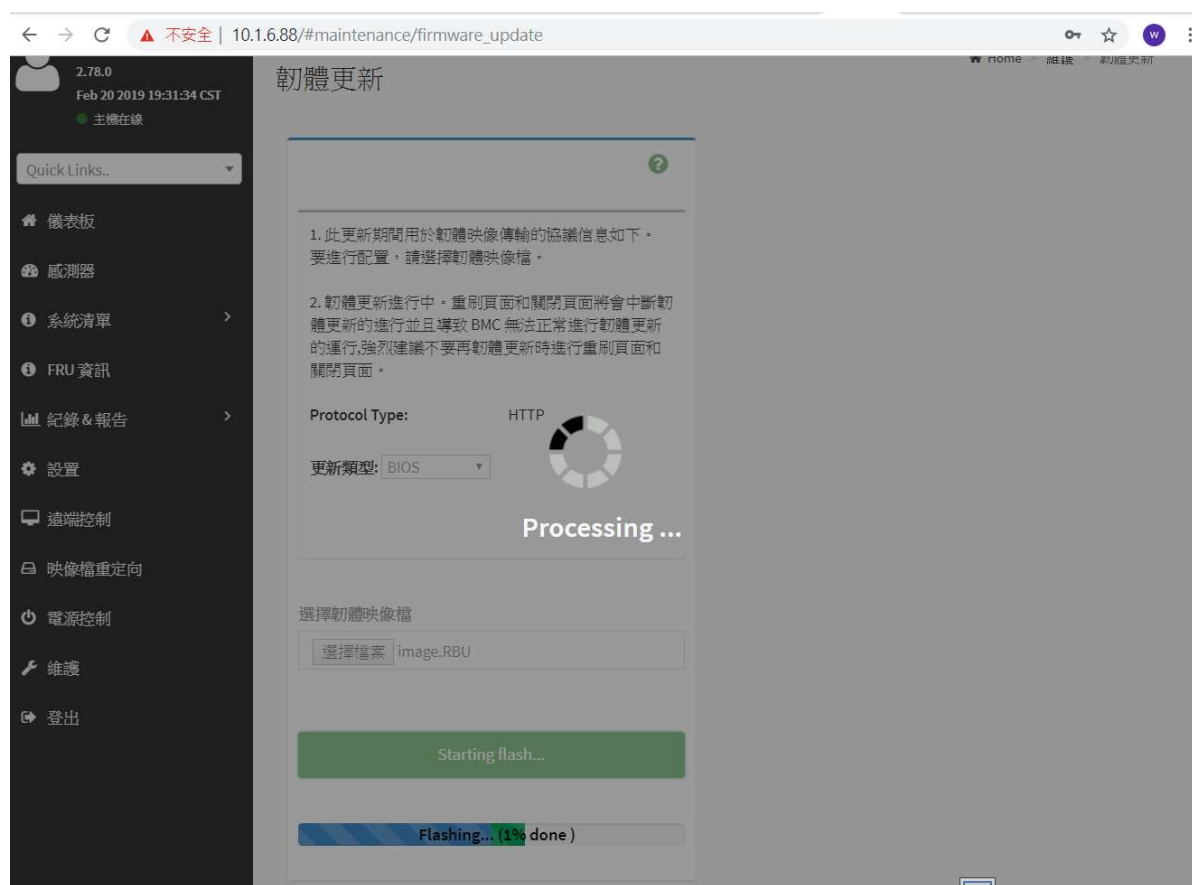
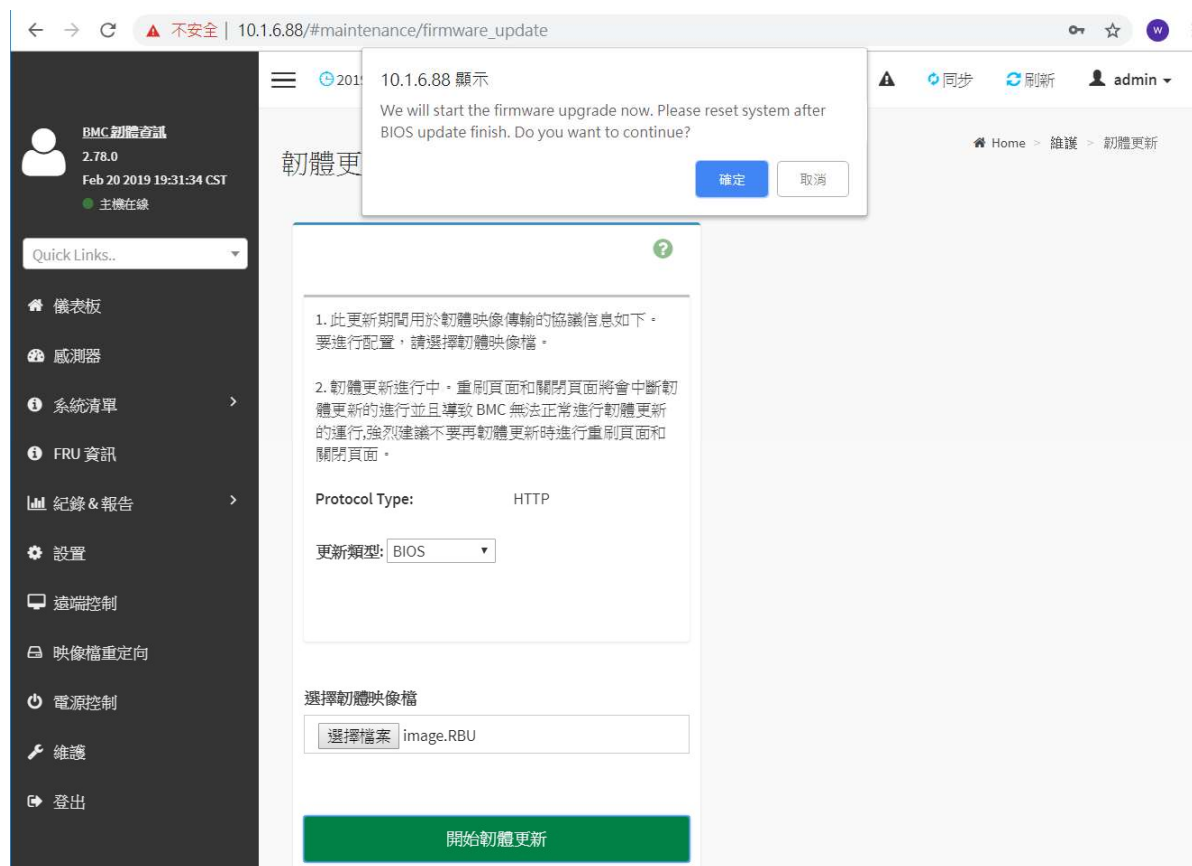
## Step-4 : Select and Click Firmware Update



## Step-5 : Select and Click Firmware Type : BIOS



# Gigabyte\_Server\_BMC(AMI)\_Web\_update\_BIOS\_SOP\_R02

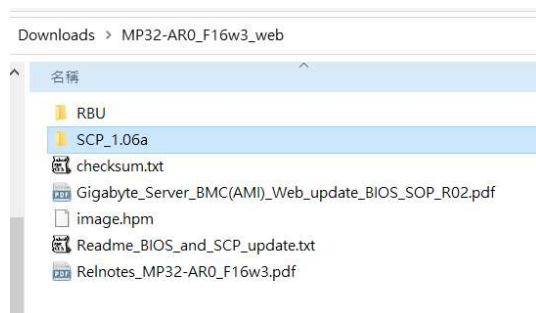


## Gigabyte\_Server\_BMC(AMI)\_Web\_update\_BIOS\_SOP\_R02

BIOS need match SCP version, so BIOS and SCP need two update steps

BIOS and SCP Both can use BMC Web update.

You can found SCP folder in package , as below case : BIOS F16w match SCP\_1.06a



Then upload hpm file ( as below case : MP32\_AR0\_scp\_signed\_1.06.20210615\_SHA256.hpm )

