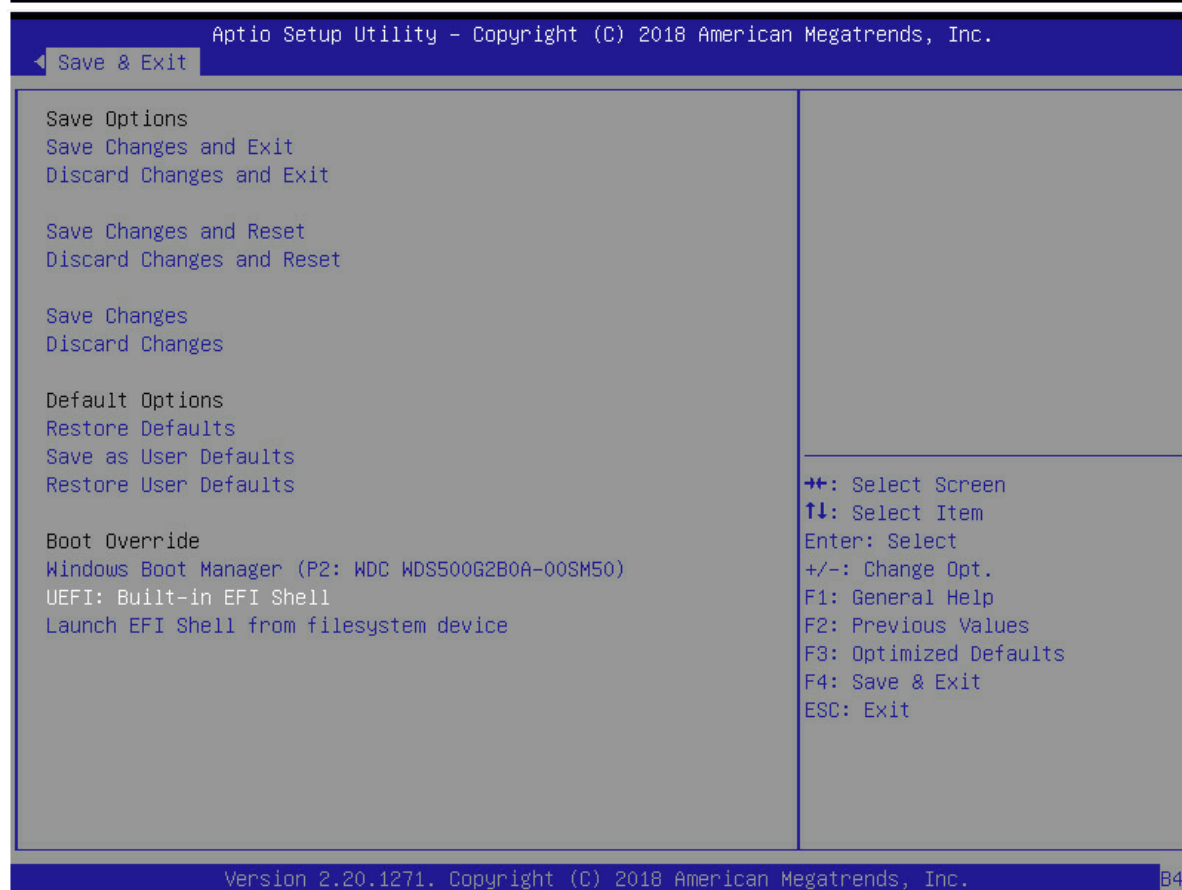
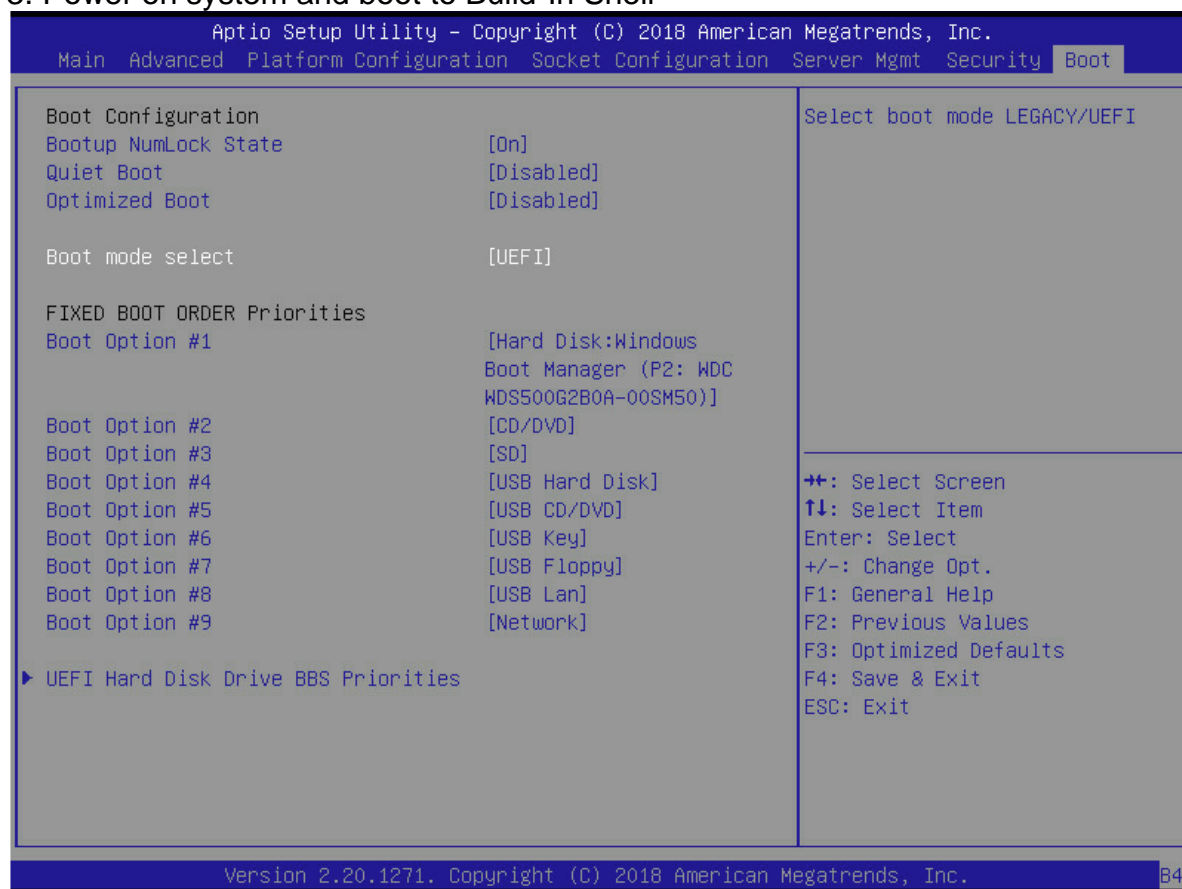


BIOS UPDATE INSTRUCTIONS FOR EFI Shell:

1. Please extract the zip file to a bootable USB flash drive that use FAT/FAT32 format
2. Insert USB flash drive to system for BIOS upgrade.
3. Power on system and boot to Build-In Shell



4. Enter your USB filesystem, like "fs0:" or "fsx:", "x" is your USB filesystem number

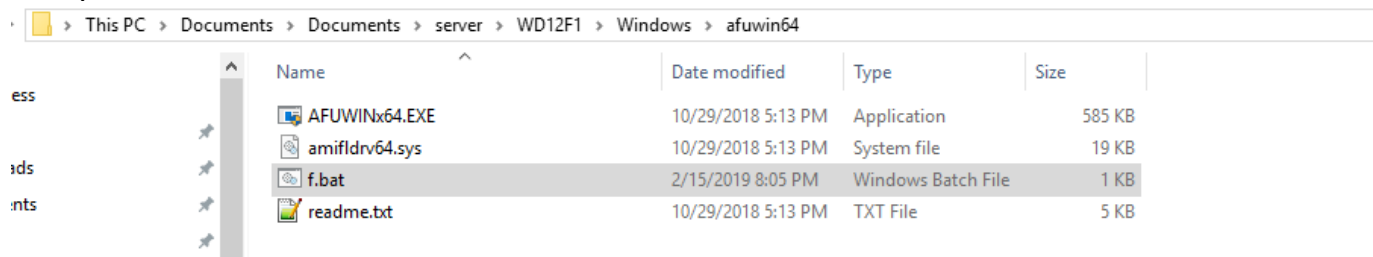
```
Mapping table
  FS0: Alias(s):HD0q0b:;BLK1:
        PciRoot(0x0)/Pci(0x14,0x0)/USB(0x10,0x0)/HD(1,MBR,0xA6411C3F,0x1F80,0x1CDE080)
  BLK2: Alias(s):
        PciRoot(0x0)/Pci(0x14,0x0)/USB(0x8,0x0)/USB(0x0,0x0)
  BLK6: Alias(s):
        PciRoot(0x0)/Pci(0x14,0x0)/USB(0x8,0x0)/USB(0x2,0x0)
  BLK3: Alias(s):
        PciRoot(0x0)/Pci(0x14,0x0)/USB(0x8,0x0)/USB(0x0,0x0)/Unit(0x1)
  BLK4: Alias(s):
        PciRoot(0x0)/Pci(0x14,0x0)/USB(0x8,0x0)/USB(0x0,0x0)/Unit(0x2)
  BLK5: Alias(s):
        PciRoot(0x0)/Pci(0x14,0x0)/USB(0x8,0x0)/USB(0x0,0x0)/Unit(0x3)
  BLK0: Alias(s):
        PciRoot(0x0)/Pci(0x14,0x0)/USB(0x10,0x0)
Shell> fs0:
FS0:\> _
```

5 Execute "F_ALL.nsh" for BIOS update

```
Found the f_All.nsh WD12D003.BIN
+-----+
|               AMI Firmware Update Utility v5.10.01.1670               |
|      Copyright (C)2018 American Megatrends Inc. All Rights Reserved.      |
+-----+
_Rreading flash ..... 0x00088000 (3%)
```

6 After bios flash finish, system must shut down PSU to have the changes take effect.

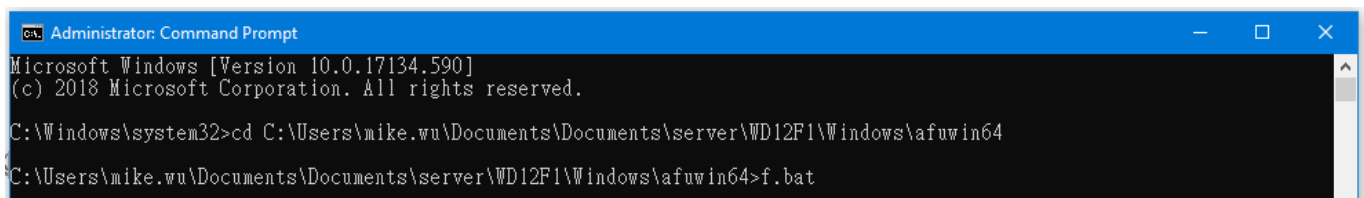
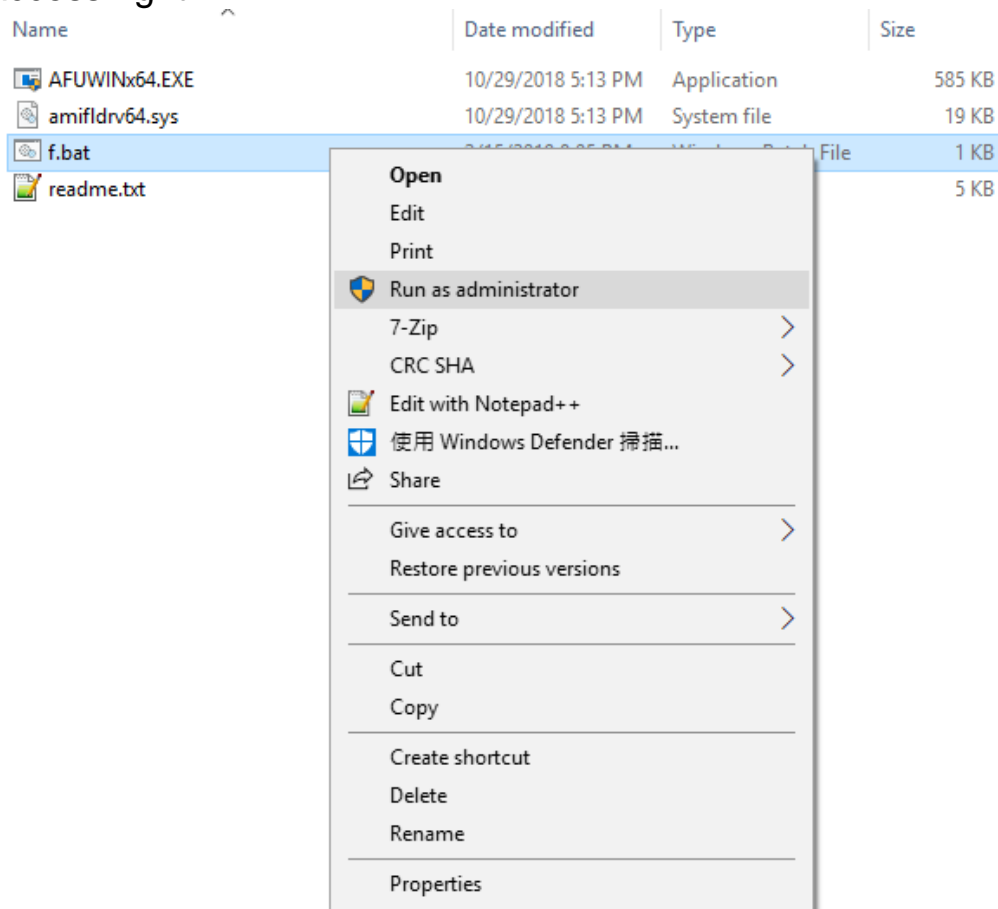
1. Unzip afuwin64.7z to windows OS folder ◦



Name	Date modified	Type	Size
AFUWINx64.EXE	10/29/2018 5:13 PM	Application	585 KB
amifldr64.sys	10/29/2018 5:13 PM	System file	19 KB
f.bat	2/15/2019 8:05 PM	Windows Batch File	1 KB
readme.txt	10/29/2018 5:13 PM	TXT File	5 KB

2. I. Execute f.bat by administrator access right. or

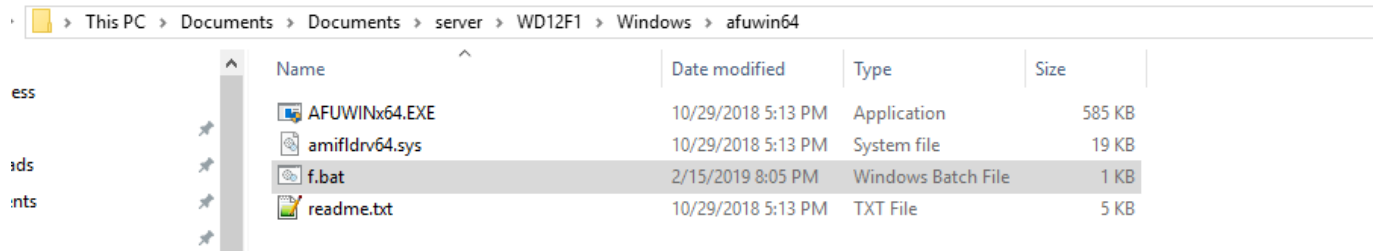
II. Open the command prompt window to execute f.bat by administrator access right.



```
Administrator: Command Prompt
Microsoft Windows [Version 10.0.17134.590]
(c) 2018 Microsoft Corporation. All rights reserved.

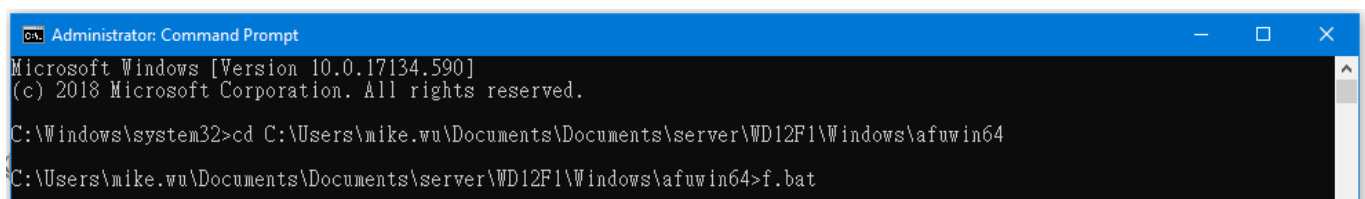
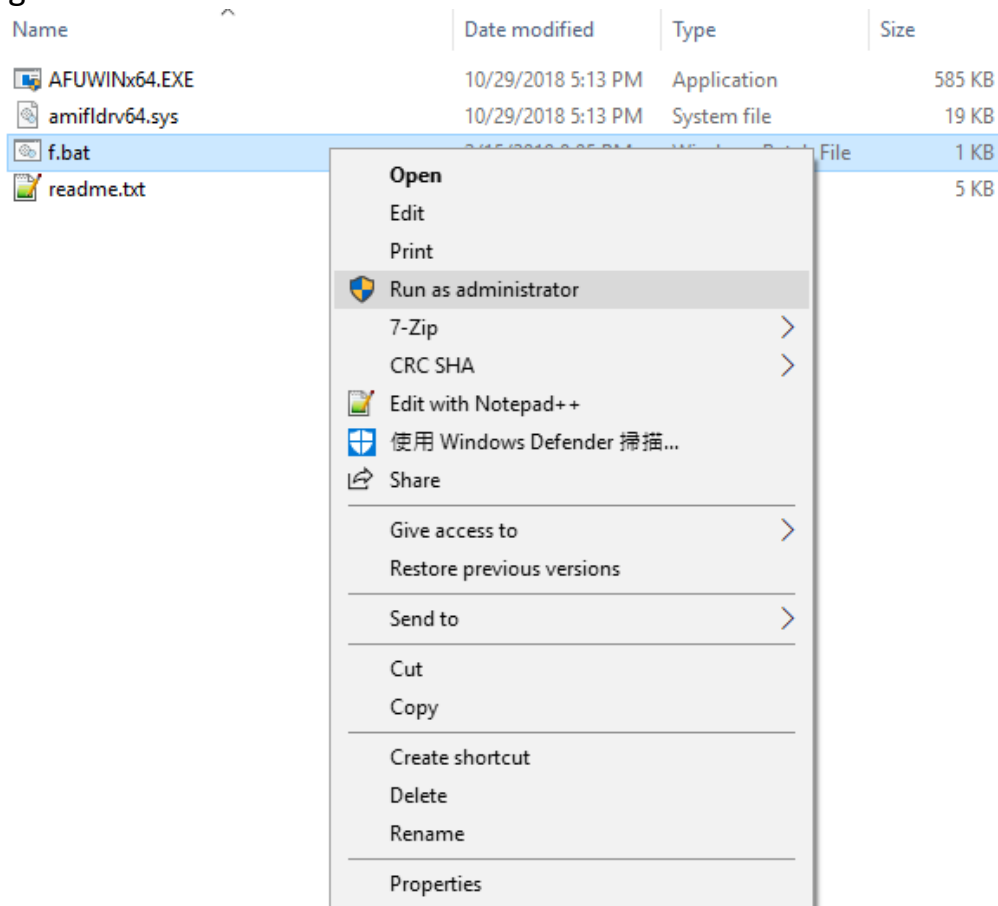
C:\Windows\system32>cd C:\Users\mike.wu\Documents\Documents\server\WD12F1\Windows\afuwin64
C:\Users\mike.wu\Documents\Documents\server\WD12F1\Windows\afuwin64>f.bat
```

2. Unzip afuwin64.7z to windows OS folder ◦



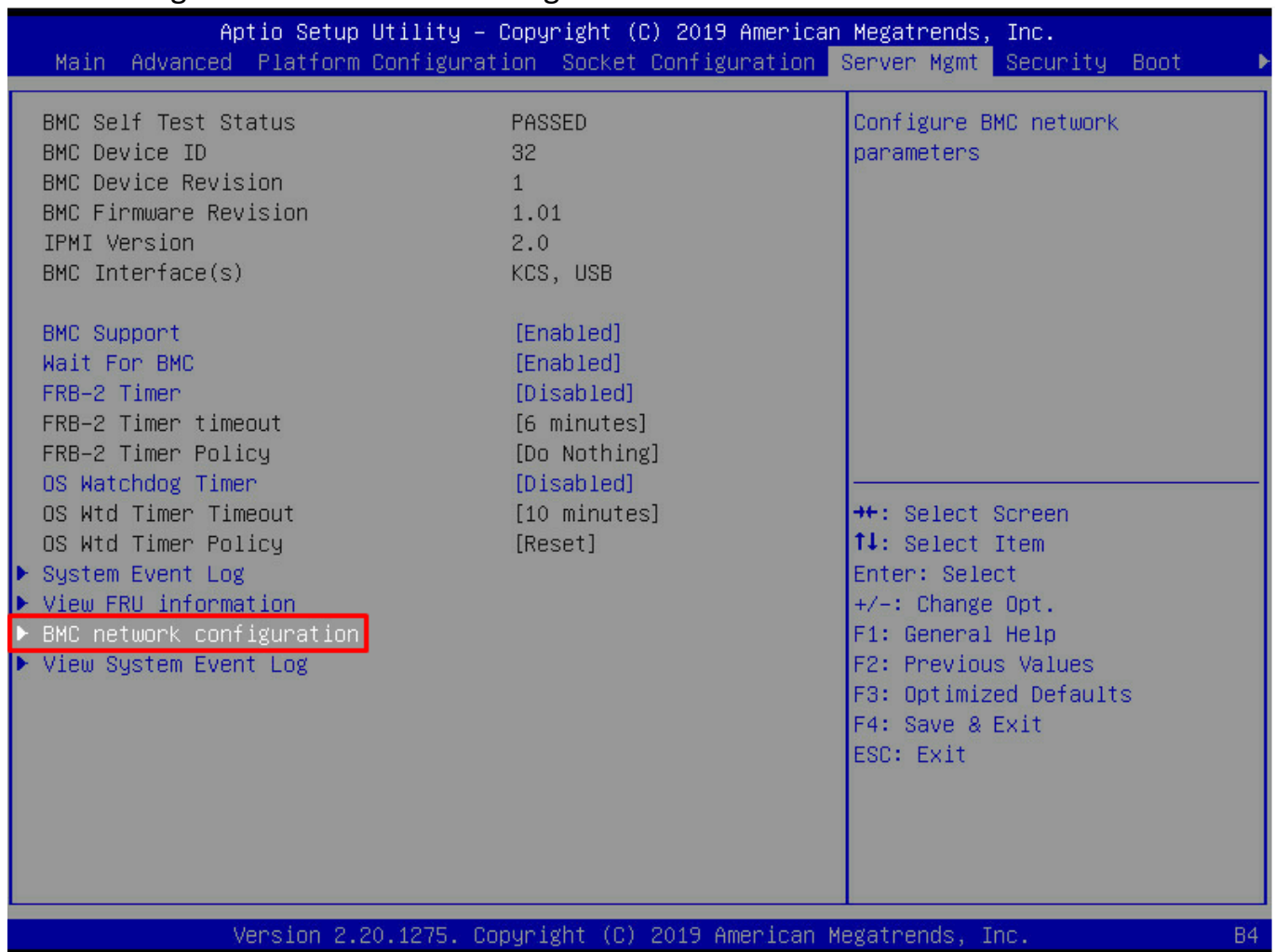
2. I. Execute f.bat by administrator access right. or

II. Open the command prompt window to execute f.bat by administrator access right.



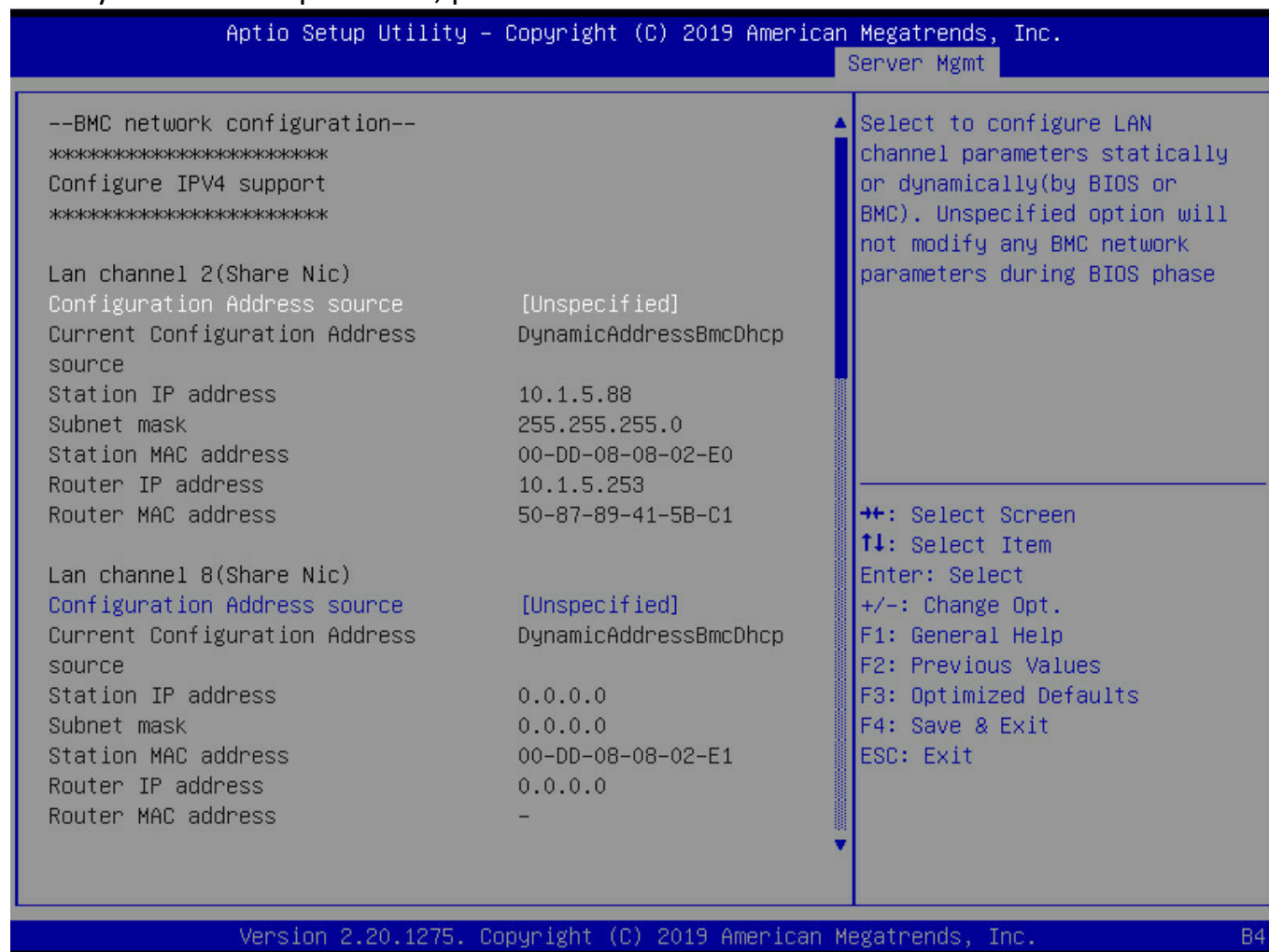
BMC UPDATE INSTRUCTIONS

1. Dedicate / ShareNIC LAN port should be connected Network Lane.
2. Server Mgmt--> BMC network configuration



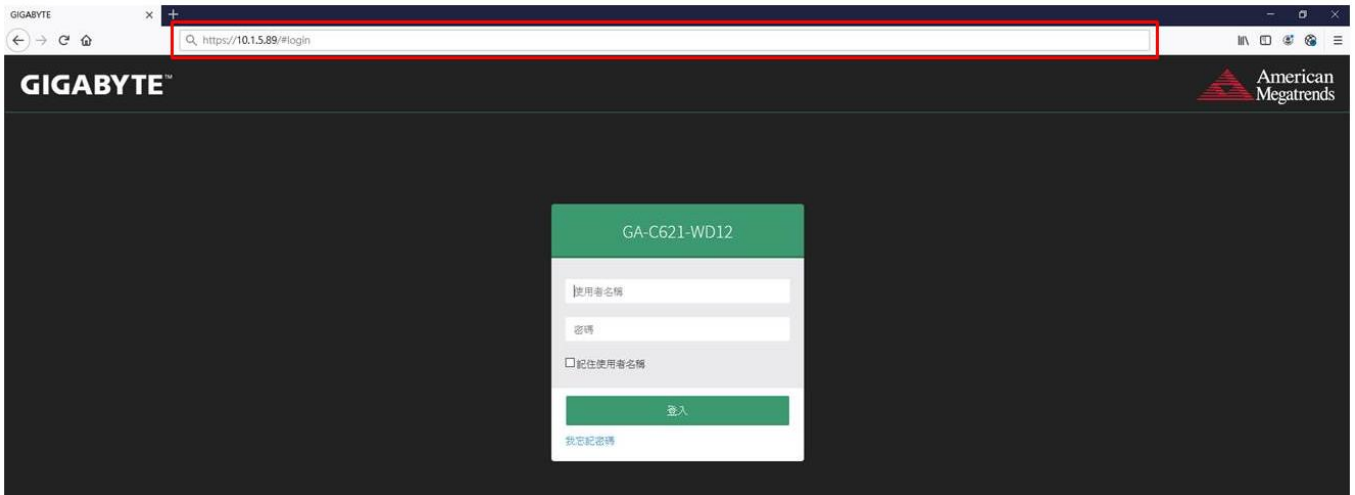
3. You can see IP address in LAN Channel 2 / LAN Channel 8

P.s. If you can't see Ip address, please follow STEP 13.

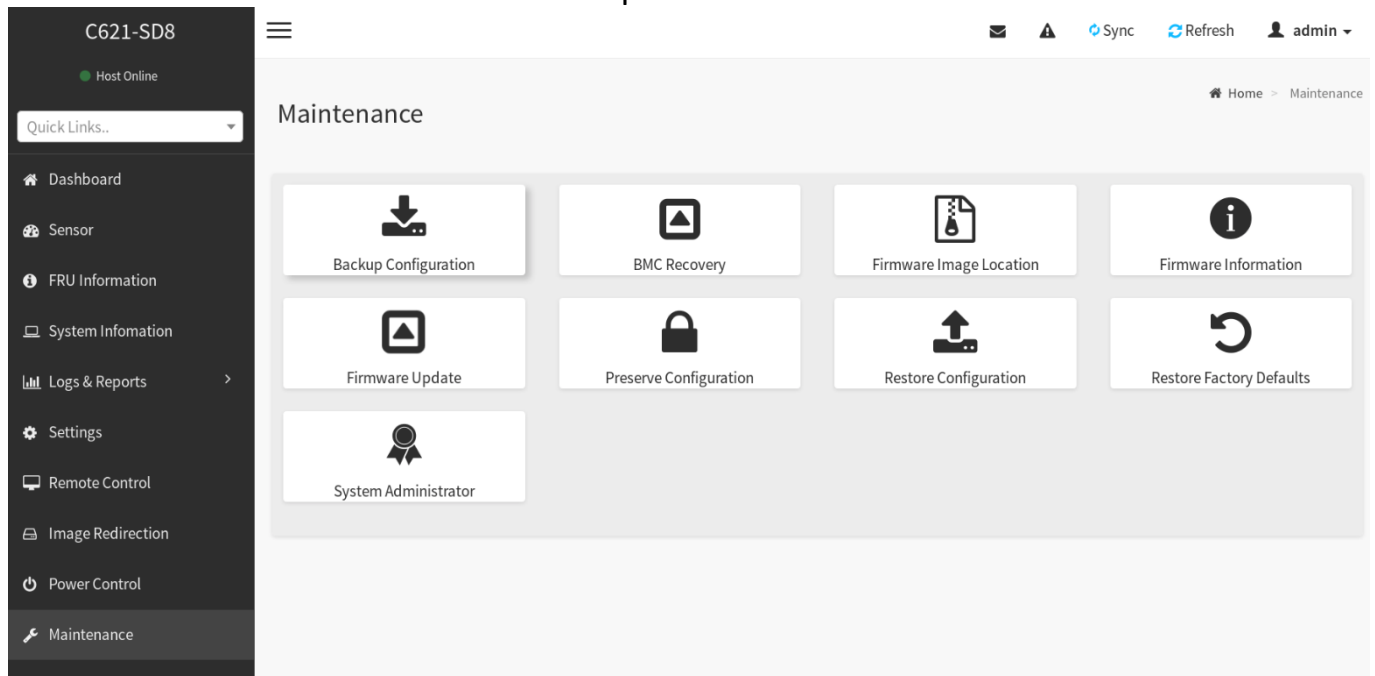


4. Enter Ip address on your Browser.

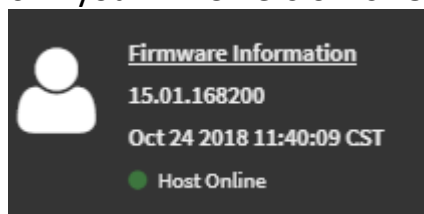
Note : address is <https://your ip>



5. Click “Maintenance” and “Firmware Update”



6. If your BMC Version is 15.01, when you update you'll need upload a key.



Uploaded signImage Public Key Info

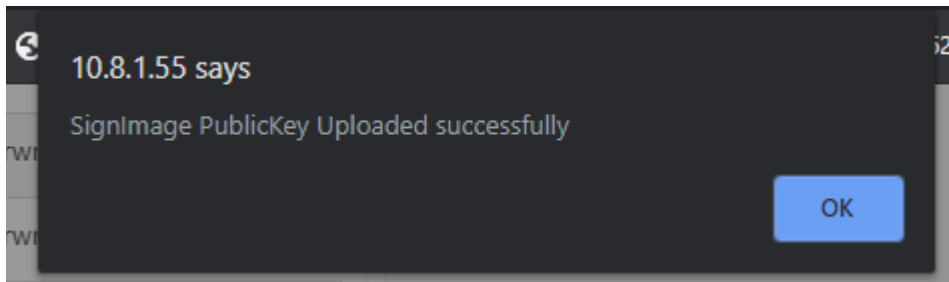
Tue Feb 4 02:30:58 2020

New signImage Public Key

Choose File

public.pem

Upload



7. Select “Update Type ” to BMC, upload BMC file(*.ima_enc), and then click “Start firmware update”

Select Firmware Image

GA-C621-SU8_1.0_F1.4.0_BMC.ima_enc

Start firmware update

8. Select to preserve all configuration or not

C621-SD8

Firmware Information

2.00.178614

Dec 28 2018 16:53:47 CST

Host Online

Quick Links..

Dashboard

Sensor

FRU Information

System Information

Logs & Reports

Settings

Remote Control

Image Redirection

Power Control

Firmware Update

Note:

Following are the Firmware update methods and components supported in this page.

BMC Firmware update.

Update Type:

BMC

Select Firmware Image

Browse...

SD8vF2.ima_enc

Start firmware update

Protocol Type:

HTTPS

☐

Preserve all Configuration. This will preserve all the configuration settings during the firmware update - irrespective of the individual items marked as preserve/overwrite in the table below.

All configuration items below will be preserved as default during the restore configuration operation. Click "Edit Preserve Configuration" to modify the Preserve status settings.

[Edit Preserve Configuration](#)

S.No	Preserve Configuration Item	Preserve Status
1	SDR	Overwrite
2	FRU	Overwrite
3	SEL	Overwrite

9. Click"OK"

5

NETWORK

Overwrite

6

NTP

Overwrite

7

SNMP

Overwrite

8

SSH

Overwrite

9

KVM

Overwrite

10

11

12

13

Uploaded:

Fri Dec 28 03:53:42 2018

New signImage Public Key

Browse...

No file selected.

Upload

Start firmware update

WARNING:Please note that after entering the update mode, the widgets, other web pages and services will not work. All the open widgets will be automatically closed. If the upgradation is cancelled in the middle of the wizard, the device will be reset only for BMC and BOOTAPP components Firmware update.

We will start the firmware upgrade now. You will not be able to access BMC until it flashes and restarts. Do you want to continue?

Cancel

OK

10. Select module section “Project Name” to upgrade

13RSDOverwrite

Uploaded signimage Public Key Info
Fri Dec 28 03:53:42 2018

New signimage Public Key

Browse...No file selected.

Upload

Section Based Firmware Update
All the module section versions in the existing image and uploaded image is same.

☐ Version Compare Flash☐ Full Flash

Section Name	Existing version	Uploaded version	Upgradable/Non-Upgradable
boot	12.0.000000	12.0.000000	<input type="checkbox"/>
conf	12.0.000000	12.0.000000	<input type="checkbox"/>
bkupconf	12.0.000000	12.0.000000	<input type="checkbox"/>
root	12.0.000000	12.0.000000	<input type="checkbox"/>
osimage	12.0.000000	12.0.000000	<input type="checkbox"/>
www	12.0.000000	12.0.000000	<input type="checkbox"/>
gigabyte	2.0.178614	2.0.178614	<input checked="" type="checkbox"/>

Flash selected sections

Uploading 100%

WARNING:Please note that after entering the update mode, the widgets, other web pages and services will not work. All the open widgets will be automatically closed. If the upgradation is cancelled in the middle of the wizard, the device will be reset only for BMC and BOOTAPP components Firmware update.

11. Click “OK”

13RSDOverwrite

Uploaded signimage Public Key Info
Fri Dec 28 03:53:42 2018

New signimage Public Key

Browse...No file selected.

Upload

Section Based Firmware Update
All the module section versions in the existing image and uploaded image is same.

☐ Version Compare Flash☐ Full Flash

Section Name	Existing version	Uploaded version	Upgradable/Non-Upgradable
boot	12.0.000000	12.0.000000	<input type="checkbox"/>
conf	12.0.000000	12.0.000000	<input type="checkbox"/>
bkupconf	12.0.000000	12.0.000000	<input type="checkbox"/>
root	12.0.000000	12.0.000000	<input type="checkbox"/>
osimage	12.0.000000	12.0.000000	<input type="checkbox"/>
www	12.0.000000	12.0.000000	<input type="checkbox"/>
gigabyte	2.0.178614	2.0.178614	<input checked="" type="checkbox"/>

Flash selected sections

Uploading 100%

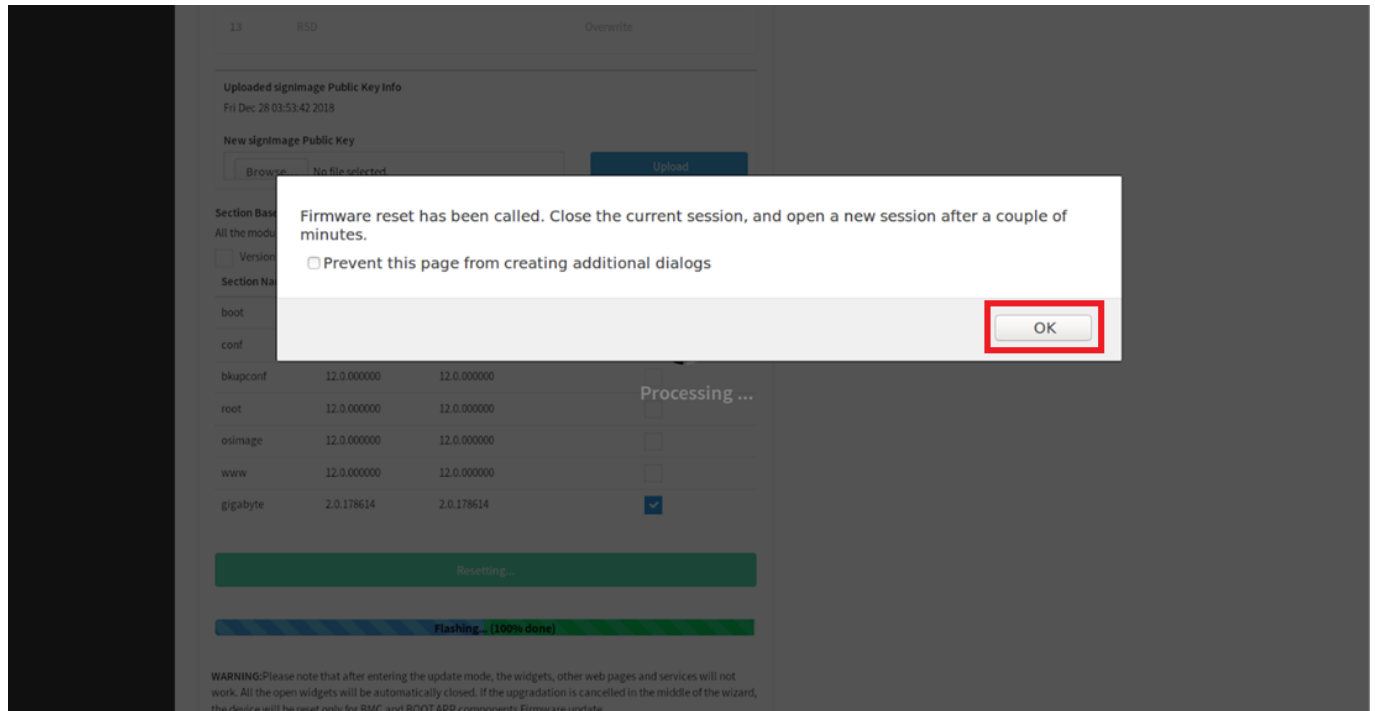
WARNING:Please note that after entering the update mode, the widgets, other web pages and services will not work. All the open widgets will be automatically closed. If the upgradation is cancelled in the middle of the wizard, the device will be reset only for BMC and BOOTAPP components Firmware update.

Clicking 'OK' will start the section based upgrade operation of the firmware. Only selected sections of the firmware will be updated. Other sections are skipped.
NOTE: Before starting flash operation, you are advised to verify the compatibility between image sections. Do you wish to proceed?

Cancel

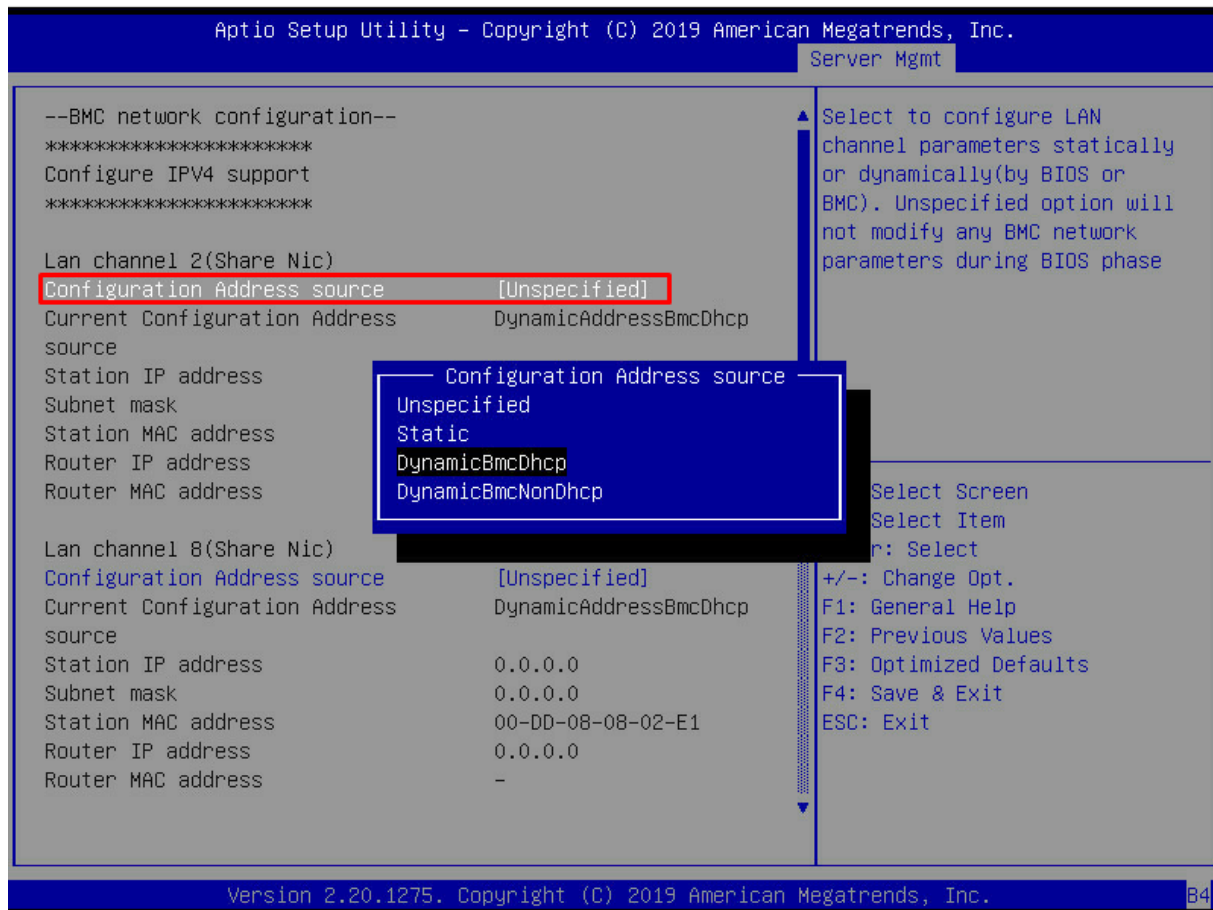
OK

12. Click “OK”



If you can't see Ip address, please follow below step.

13. Set Configuration Address source to DynamicBmcDhcp, and reboot.



14. Or Set Configuration Address source to Static.

Please noted. IP & console side should be same subnet mask.

