

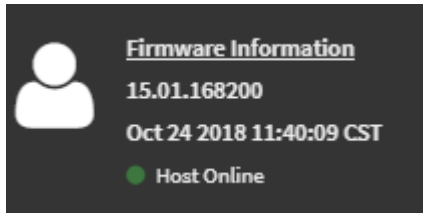
# SU8 Update SOP

## Table of Contents:

SU8 Update SOP .....	1
Start Guide.....	2
BMC Update Instruction .....	3
Bios Update Instruction .....	10

## Start Guide

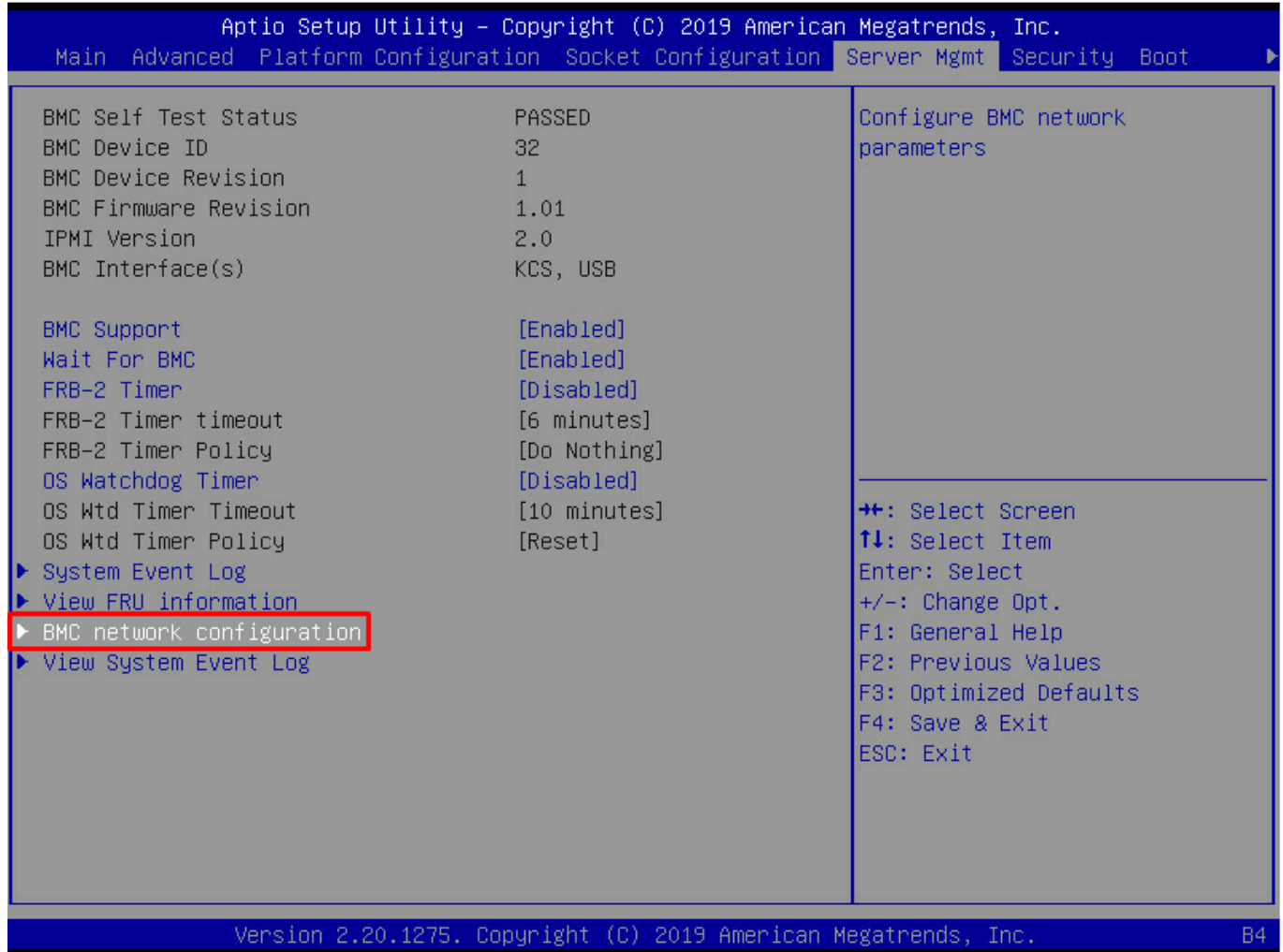
1. If the BMC Version is 15.01, please update BMC FW first.



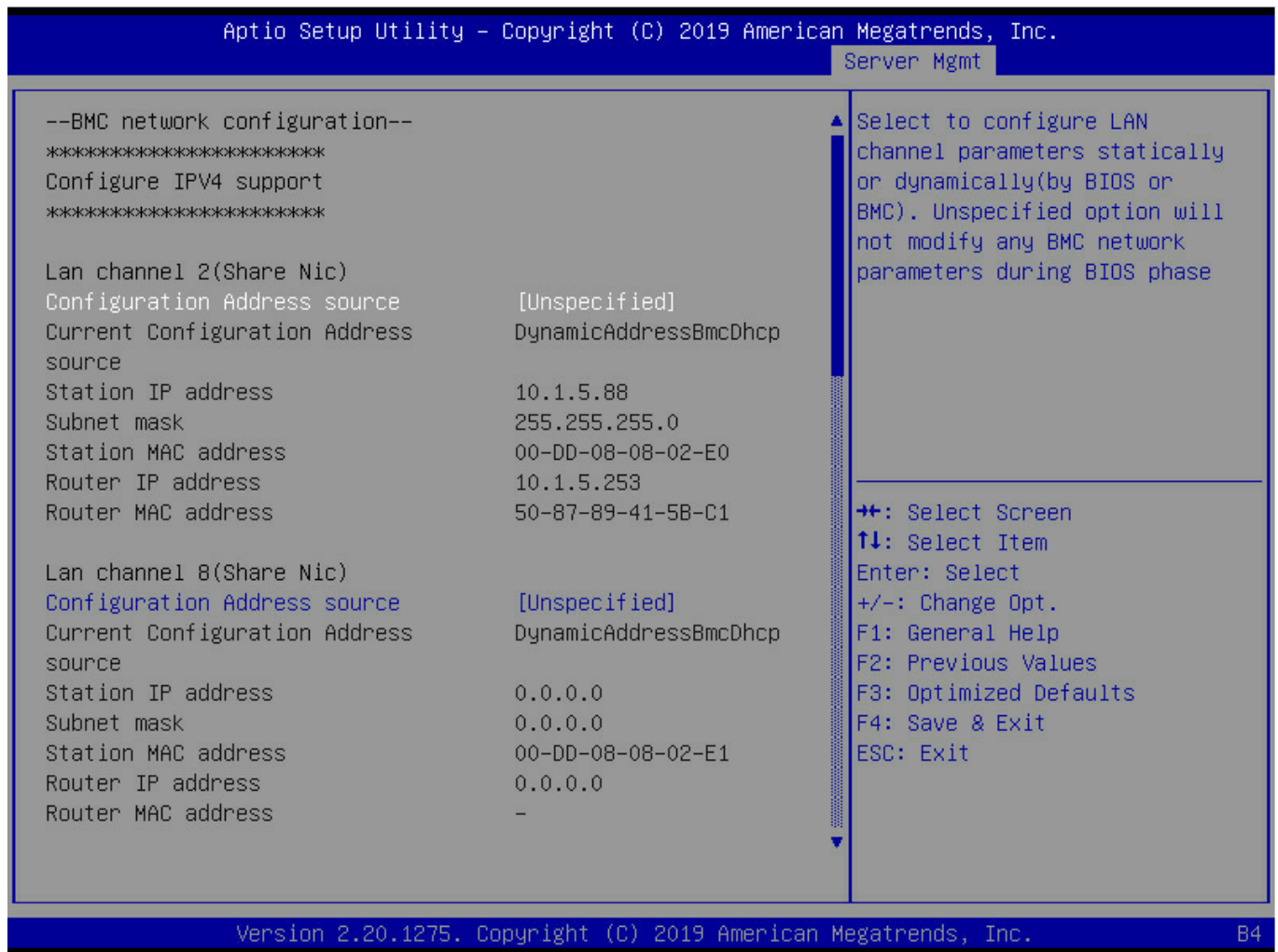
2. If any other version, go to “Bios Update Instruction (Page 10)” and update directly.

## BMC Update Instruction

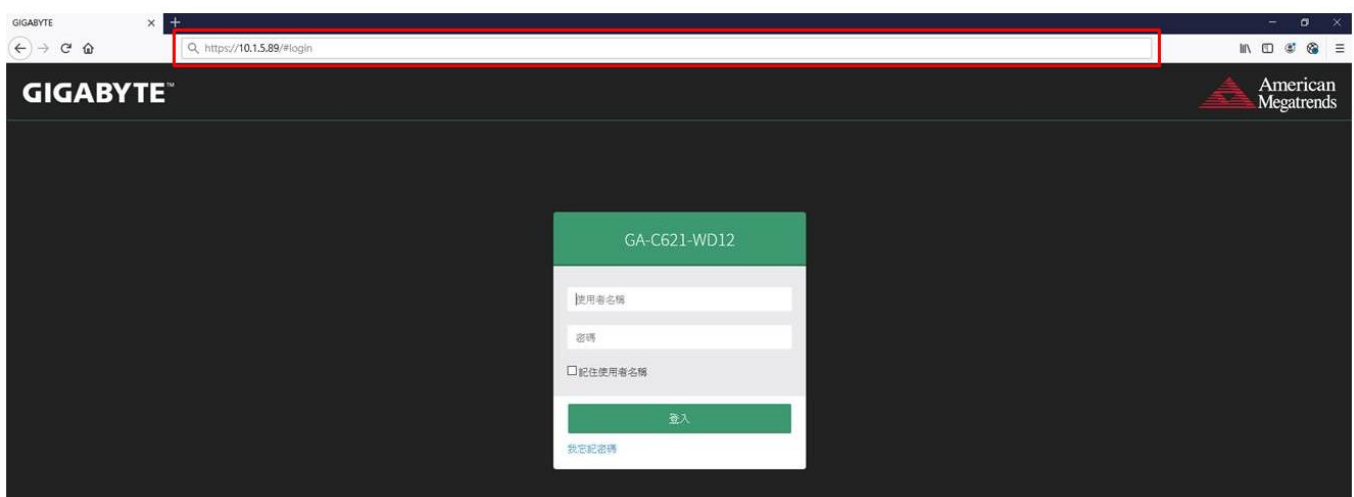
1. Dedicate / ShareNIC LAN port should be connected Network Lane.
2. Server Mgmt--> BMC network configuration



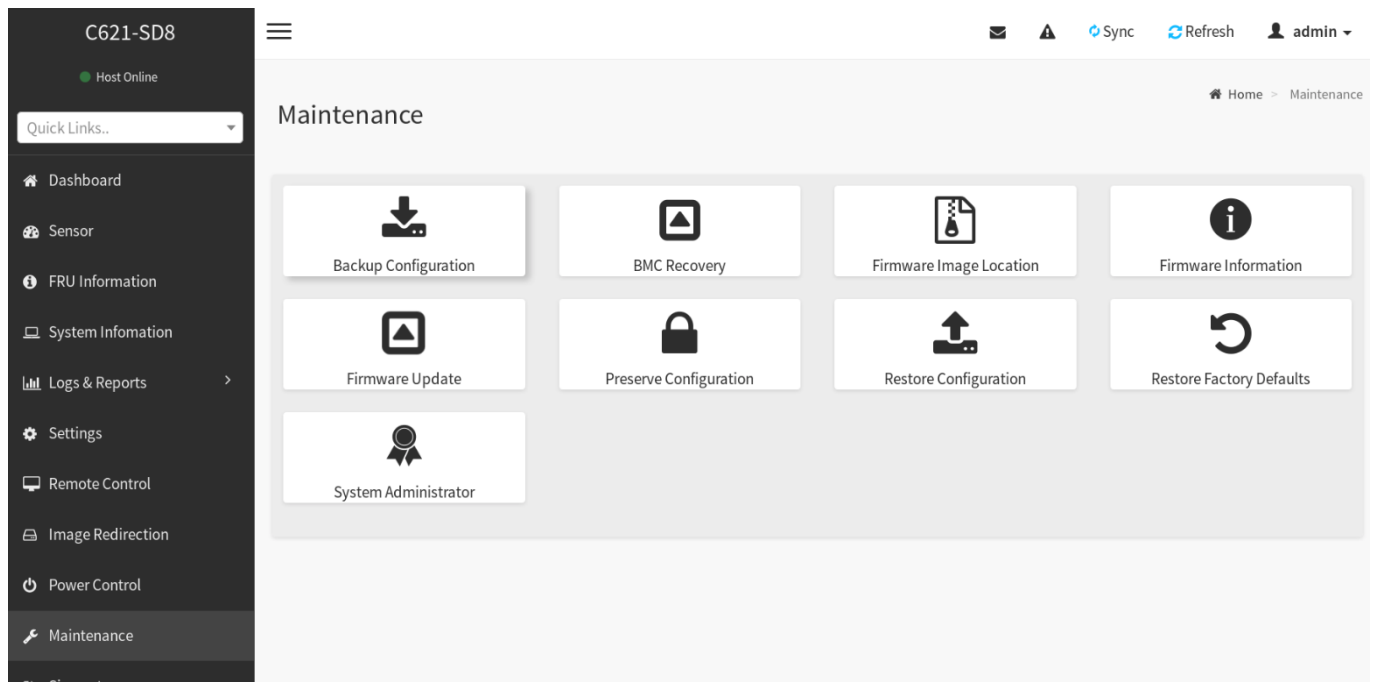
3. You can see IP address in LAN Channel 2 / LAN Channel 8
- Note: If you can't see IP address, please refer to STEP 13 (Page 9).



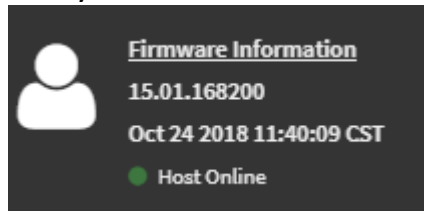
4. Enter IP address on your browser. (Address is > https://[your IP])



5. Click "Maintenance" and "Firmware Update"



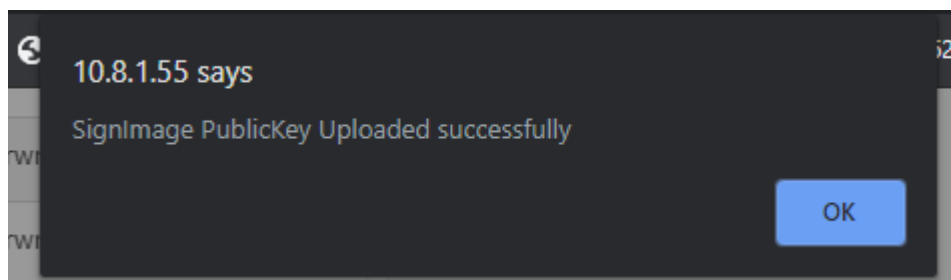
6. If your BMC Version is 15.01, when you update you'll need upload a key.



Uploaded signImage Public Key Info  
Tue Feb 4 02:30:58 2020

New signImage Public Key

public.pem



7. Select "Update Type" to BMC, upload BMC file(\*.ima\_enc), and then click "Start

firmware update”

Select Firmware Image

Choose File

GA-C621-SU8\_1.0\_F1.4.0\_BMC.ima\_enc

Start firmware update

8. Check to preserve all configuration or not

C621-SD8

Firmware Information

2.00.178614

Dec 28 2018 16:53:47 CST

Host Online

Quick Links...

Dashboard

Sensor

FRU Information

System Information

Logs & Reports

Settings

Remote Control

Image Redirection

Power Control

Firmware Update

Note:

Following are the Firmware update methods and components supported in this page.

BMC Firmware update.

Update Type:

BMC

Select Firmware Image

Browse...

SD8vF2.ima\_enc

Start firmware update

Protocol Type:

HTTPS

☐

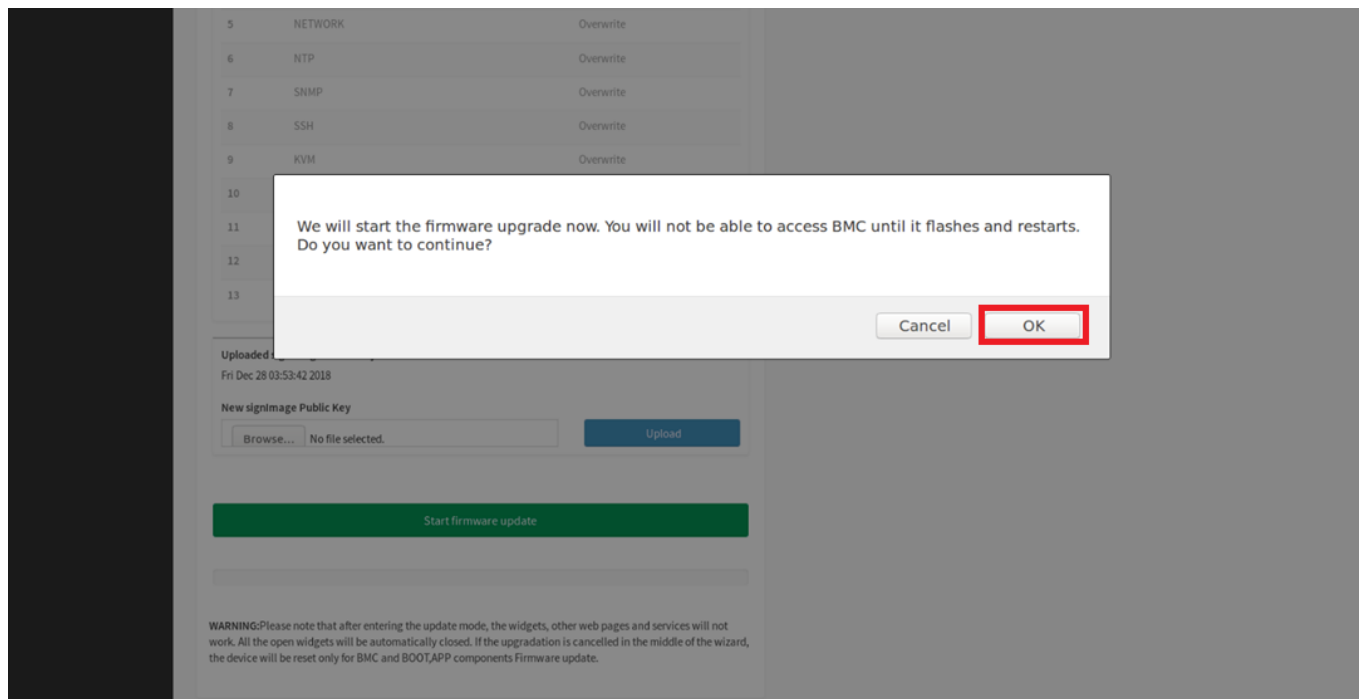
Preserve all Configuration. This will preserve all the configuration settings during the firmware update - Irrespective of the individual items marked as preserve/overwrite in the table below.

All configuration items below will be preserved as default during the restore configuration operation. Click "Edit Preserve Configuration" to modify the Preserve status settings.

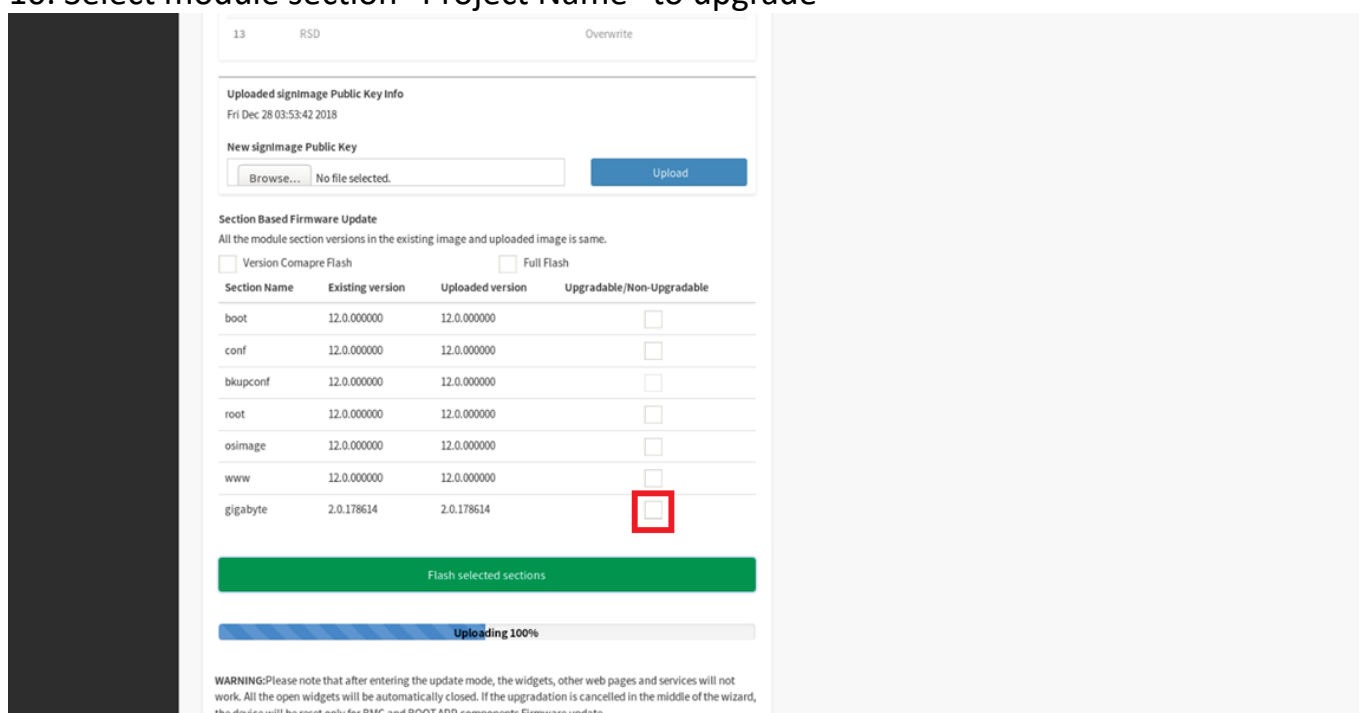
[Edit Preserve Configuration](#)

S.No	Preserve Configuration Item	Preserve Status
1	SDR	Overwrite
2	FRU	Overwrite
3	SEL	Overwrite

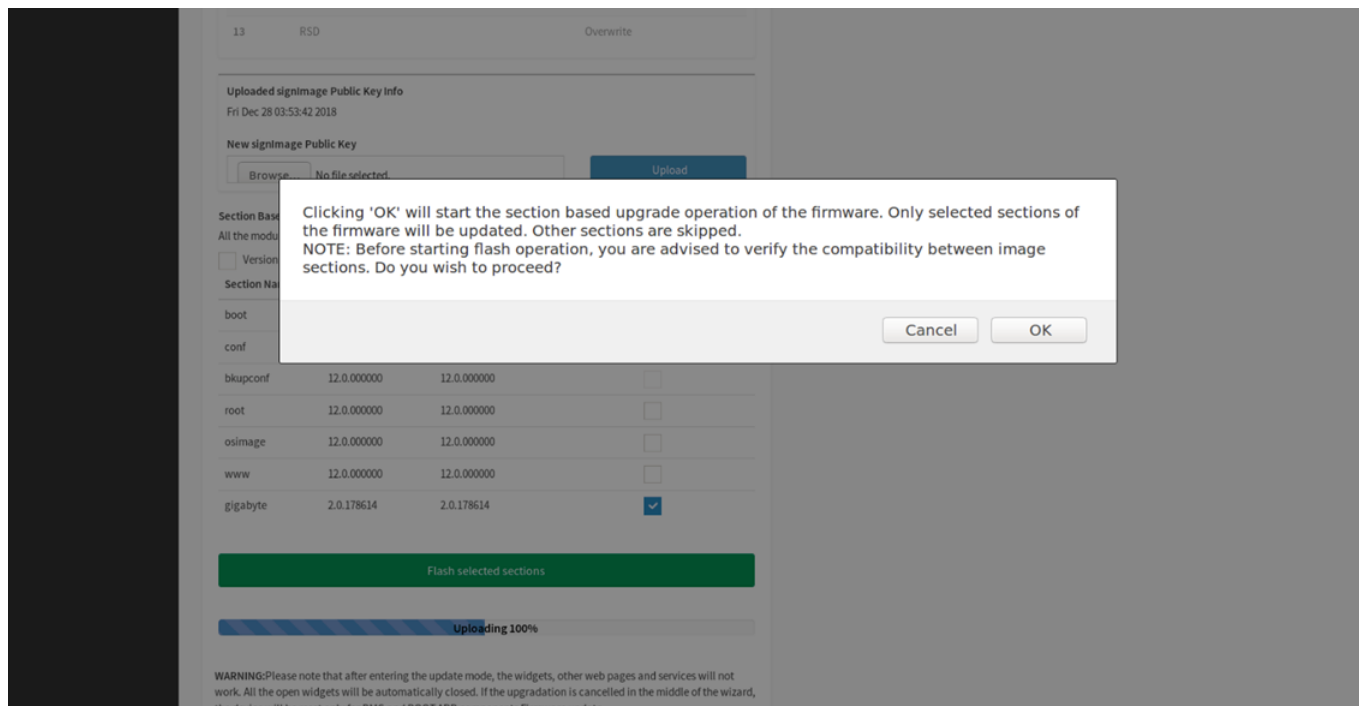
9. Click “OK” when prompted



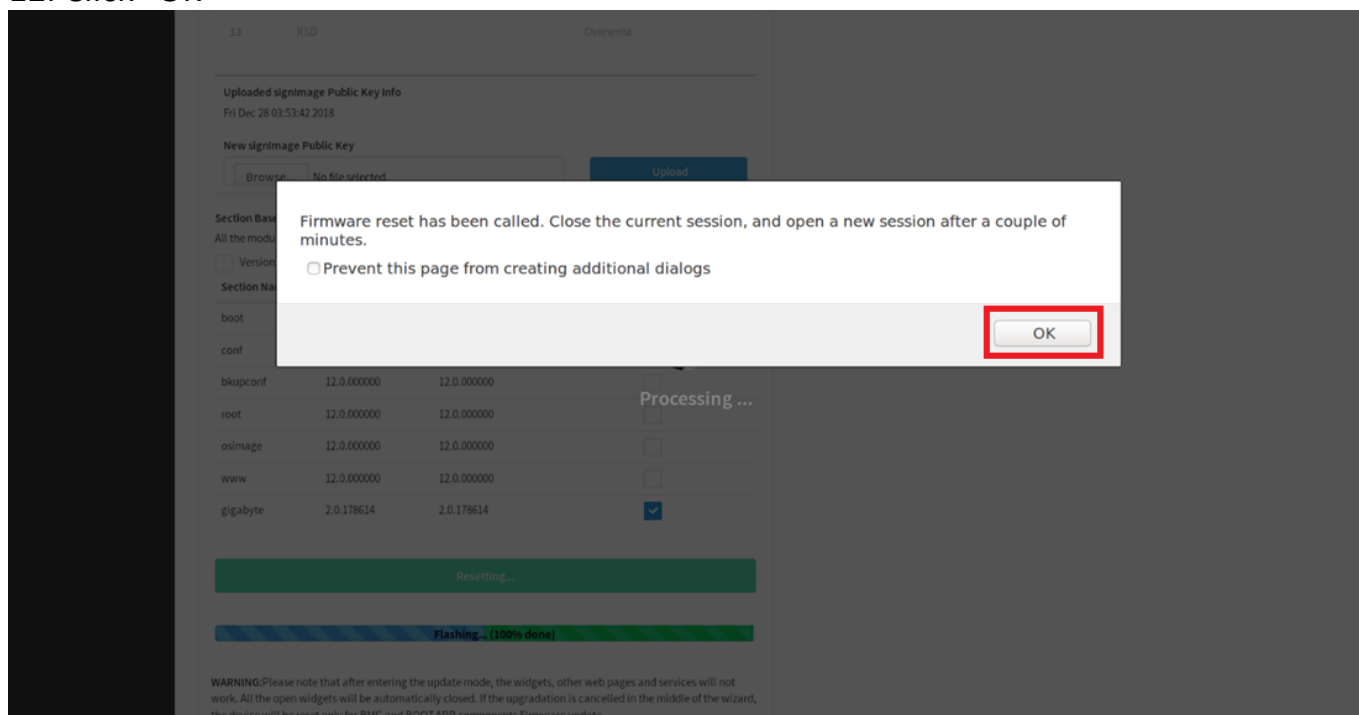
## 10. Select module section "Project Name" to upgrade



## 11. Click "OK"



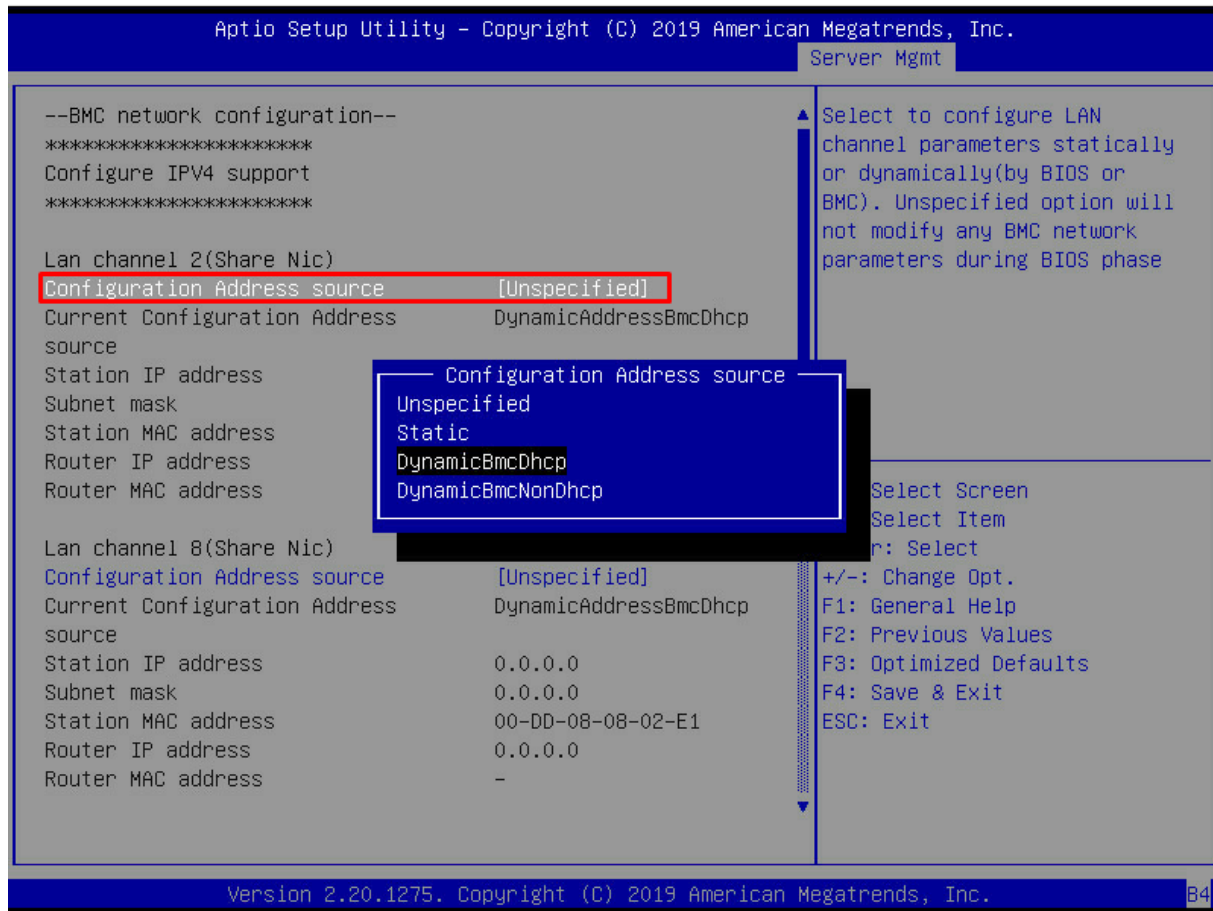
## 12. Click "OK"



If you can't see IP address, please follow the step below -

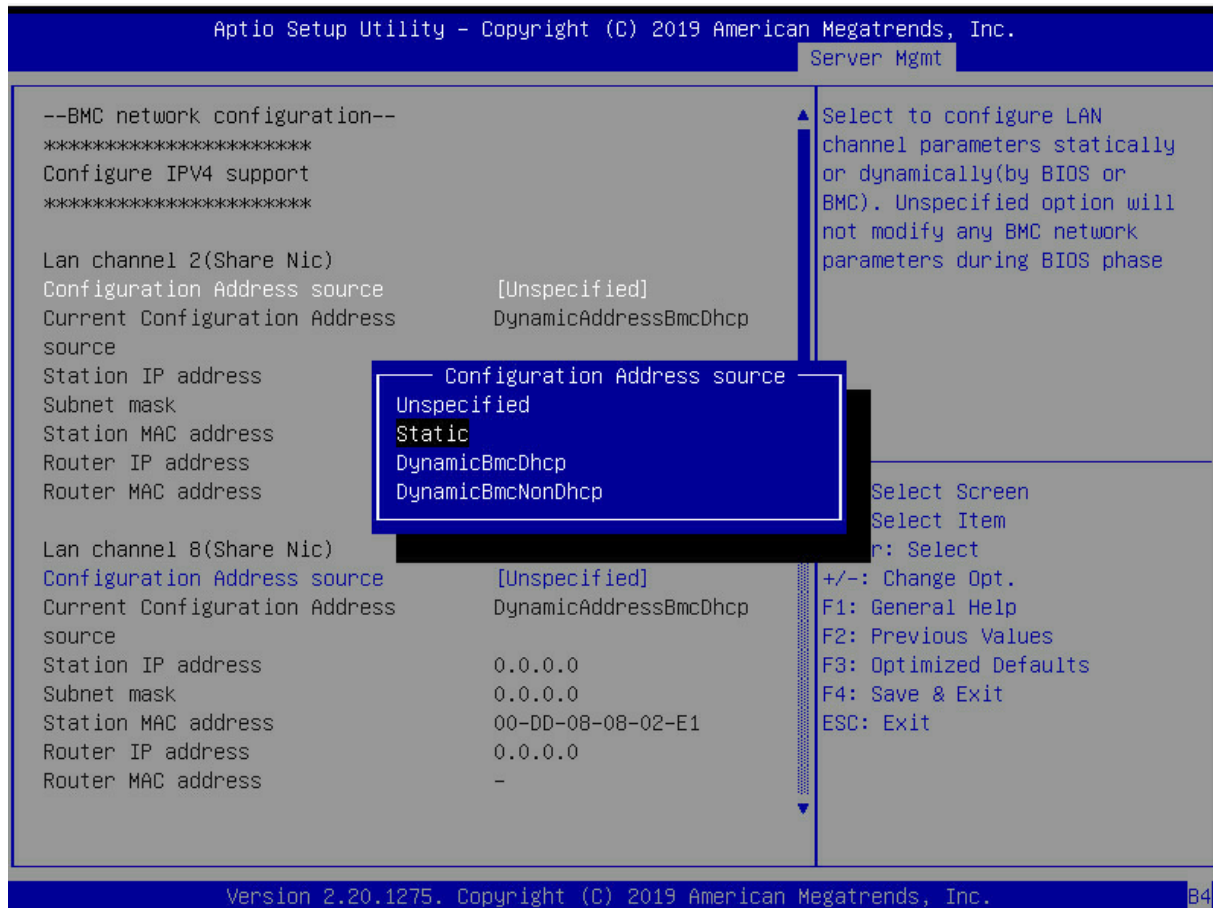


### 13. Set Configuration Address source to DynamicBmcDhcp, and reboot.



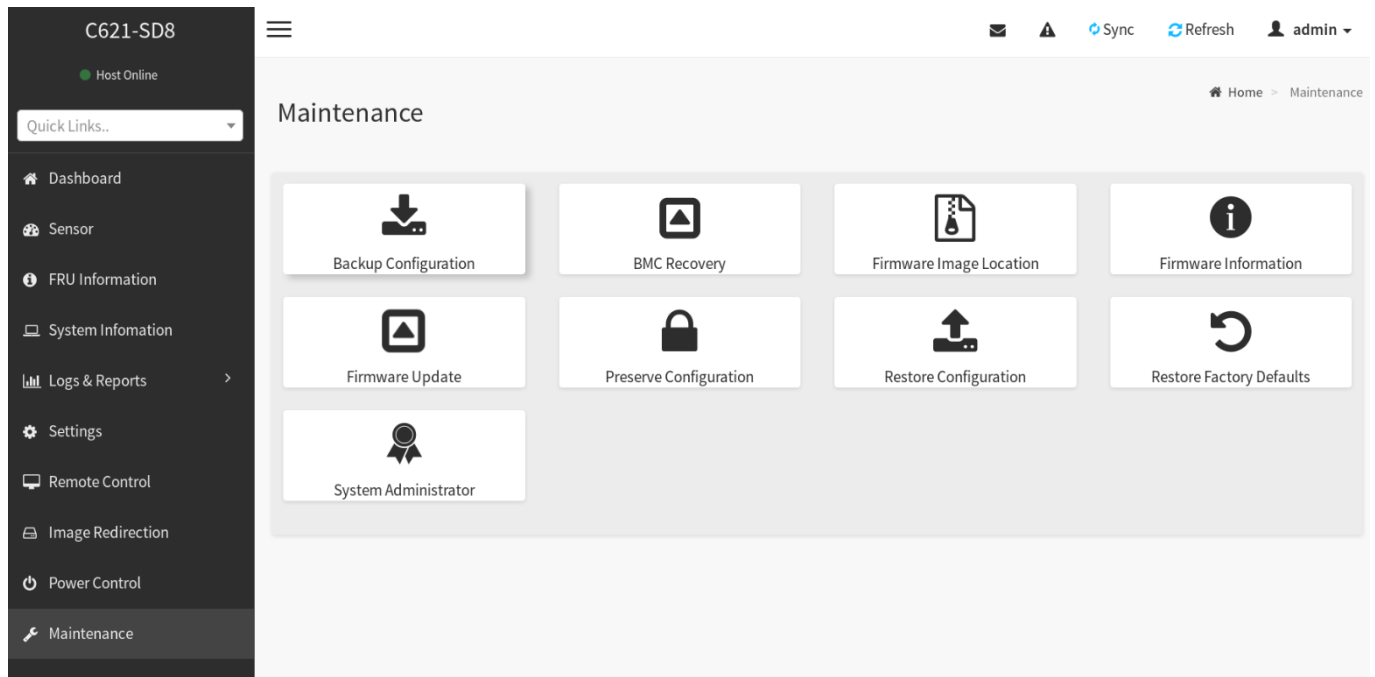
### 14. Or Set Configuration Address source to Static.

Please noted. IP & console side should be same subnet mask.

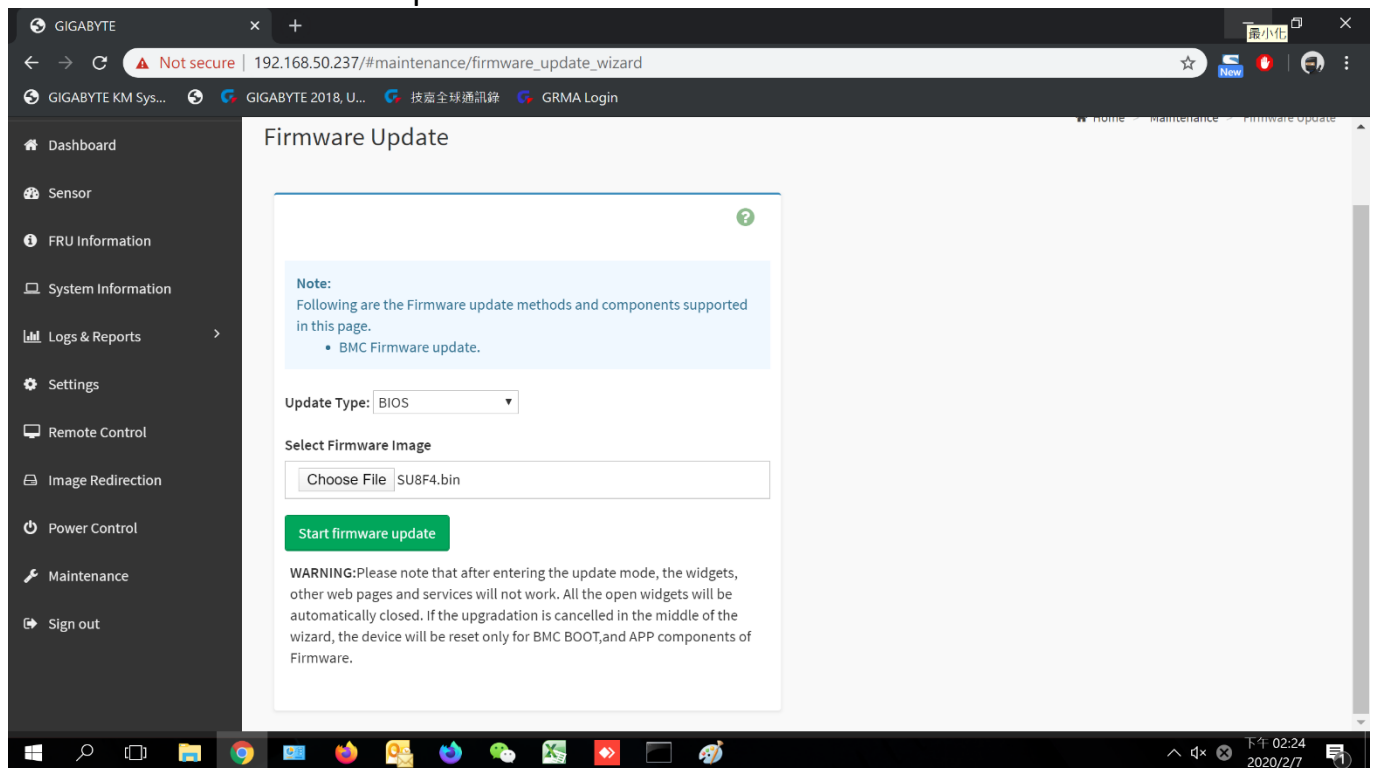


## Bios Update Instruction

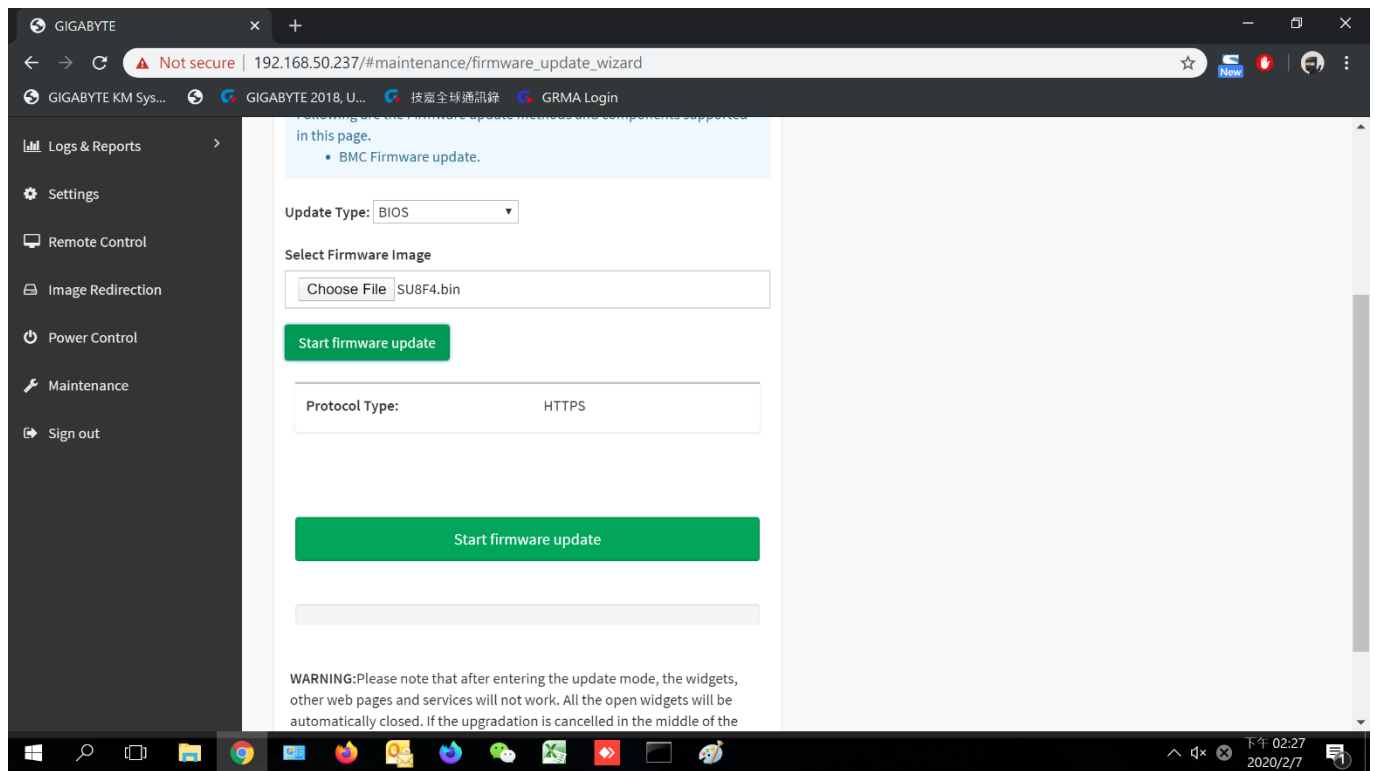
1. If you just update BMC FW, please wait BMC to restart (Please do not power off or reboot)
2. Click “Maintenance” and “Firmware Update”



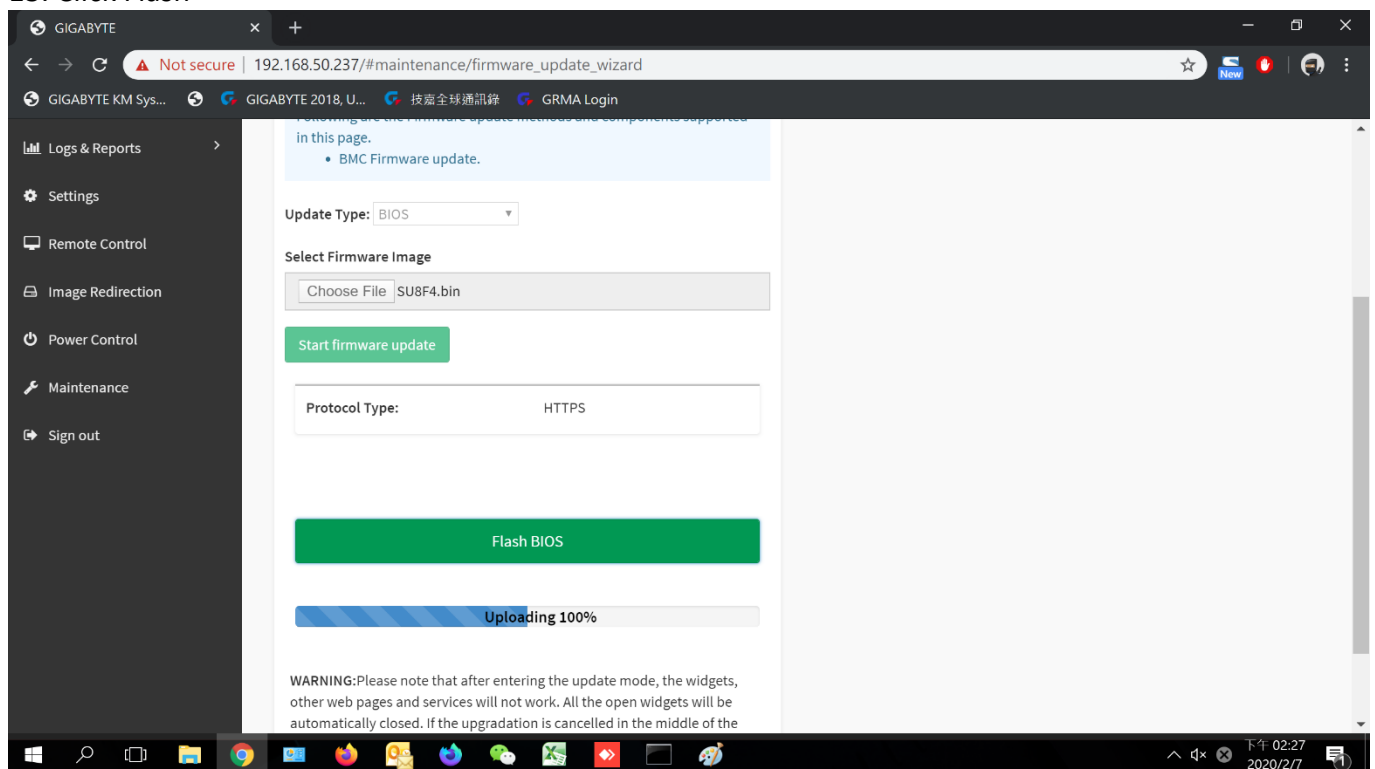
### 11. Chose SU8F4.bin and update



### 12. Click start



### 13. Click Flash



14. Finish, now you can reboot. Once the boot is successful, you may use shell update to F5 again.

